



14 Tyne Road, Bristol
£925,000

14 Tyne Road

Bristol, Bristol

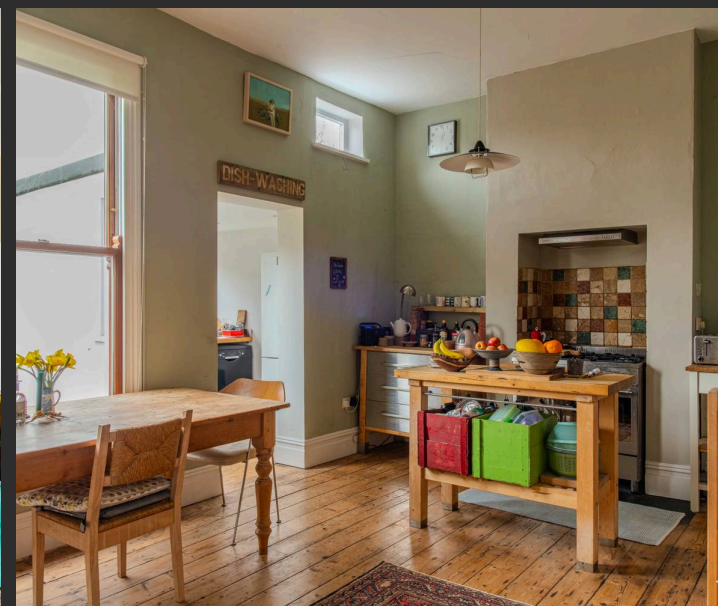
- Characterful end of terrace home
- Off road parking and rear access
- Four double bedrooms
- c50ft garden with lawn and mature tree
- Versatile basement with power, light and sink
- Redland Green APR
- First floor bathroom
- Open plan kitchen/diner
- Close to shops, cafes and restaurants
- 1956 sq ft

This substantial and characterful end of terrace home sits in the heart of Bishopston, well positioned within the Redland Green APR. Gloucester Road and its many shops, cafés and restaurants are just a short walk away, while the property also benefits from a garden of approximately 50ft. This is a well maintained family home which benefits from the potential to extend the existing accommodation if desired (subject to consent).

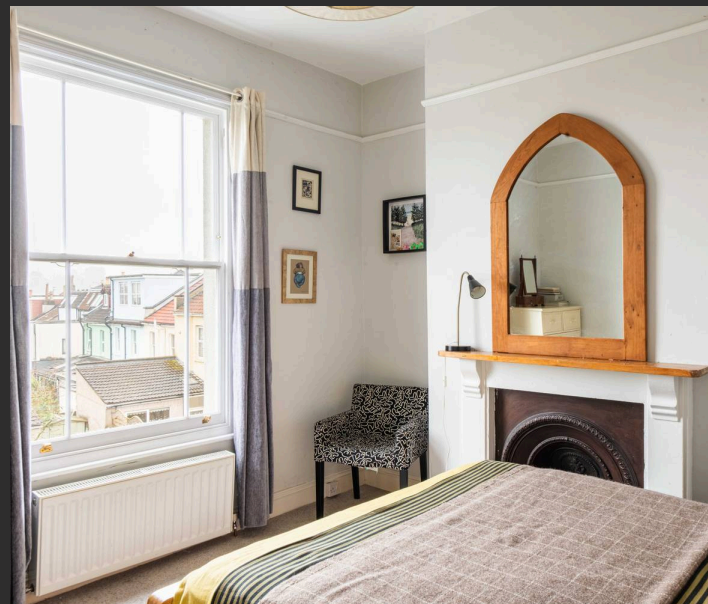
A paved driveway at the front of the property provides off street parking for two cars. The entrance to the house is located to the side of the building, facing Wolseley Road.

The front door opens into an entrance hall where wooden flooring, ceiling cornicing and a picture rail introduce the period character found throughout the home. From here, doors lead to the ground floor rooms.

At the front of the house, the living room is bright and welcoming thanks to a large bay sash window. A cast iron log burner provides a cosy focal point during the colder months. Next door is a second reception room, currently used as a study. This room



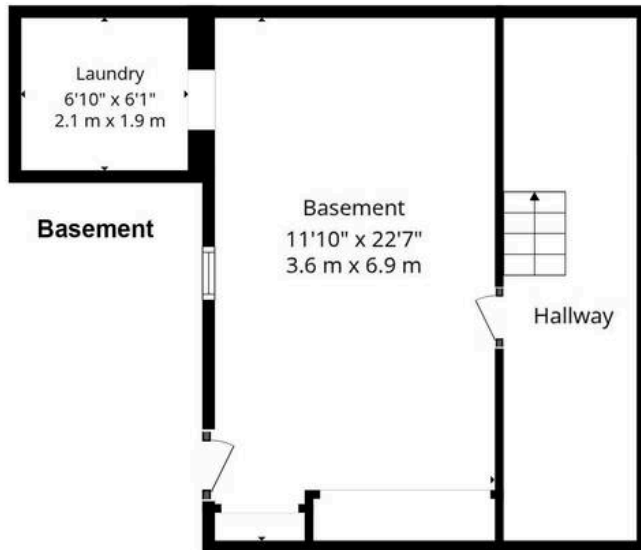
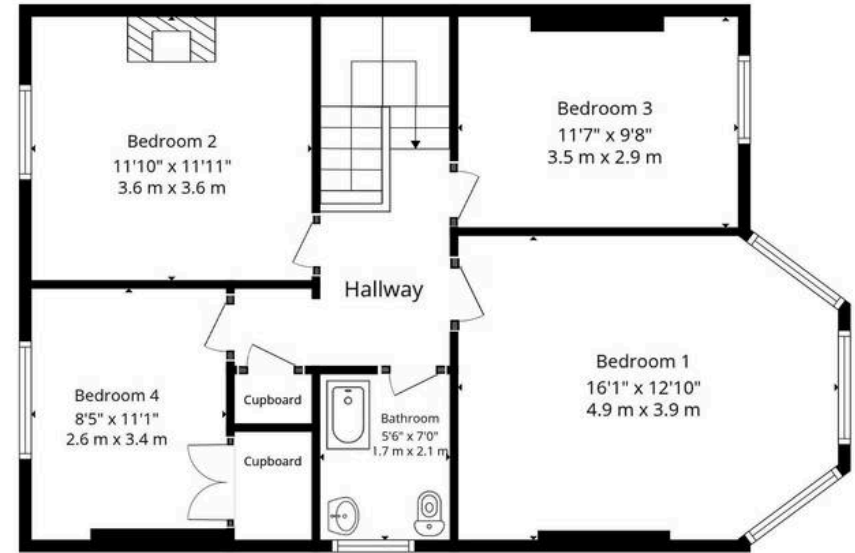
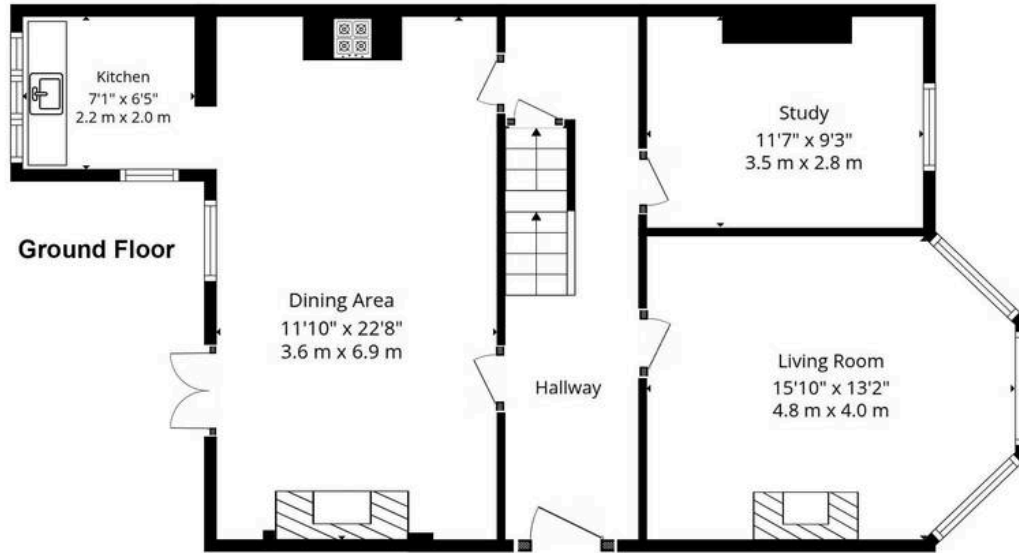
You can include any text here. The text can be modified upon generating your brochure.



You can include any text here. The text can be modified upon generating your brochure.



14 Tyne Road, Bishopston, BS7 8EE



Total: 1927 sq. ft, 179 sq. m





Elephant Estate Agents

Elephant, 2 The Promenade Gloucester Road - BS7 8AL

01173700556 • bishopston@elephantlovesbristol.co.uk • www.elephantlovesbristol.co.uk/