



28 Lancashire Road, Bristol
£1,000,000

28 Lancashire Road

Bristol, Bristol

- An imposing Victorian semi-detached home
- Five bedrooms
- An additional office
- Off-street parking
- Quiet residential road
- Close to Gloucester Road
- Beautifully landscaped gardens
- Close to St Andrews Park

This impressive five-bedroom semi-detached home is situated on one of Bishopstons premier roads, close to the independent shops, cafés, and restaurants lining the popular Gloucester Road. It is also within close proximity to St Andrews Park, Fairfield and Trinity Secondary Schools, and Sefton Park and Brunel Field Primary Schools.

The property retains many period features and has been thoughtfully upgraded to a high standard, with significant improvements made by the current owners, including a new kitchen, bi-folding doors, and a complete overhaul of the gardens.

The front of the property has a beautiful Wisteria climbing the stone facade, off-street parking, a tiled pathway to the entrance, and a variety of mature plants and shrubbery. At the entrance door, a central hall offers a practical space to tuck away shoes and coats, with doors to the ground-floor reception rooms and an understairs storage cupboard. From here, parquet flooring runs through the entire ground floor and into the sitting room.

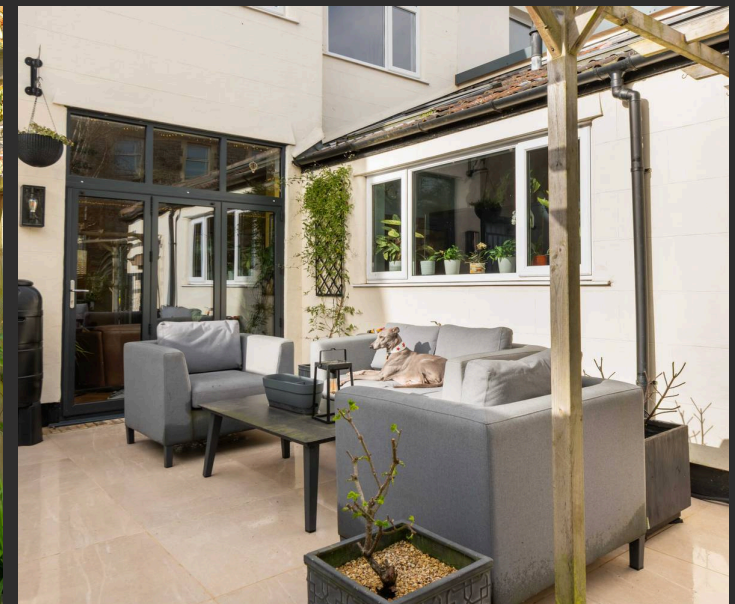
The spacious sitting room extends the entire width of the property and features double-glazed bay and picture windows to the front, cornice and a gas-fueled, period-style fireplace. At the rear, the



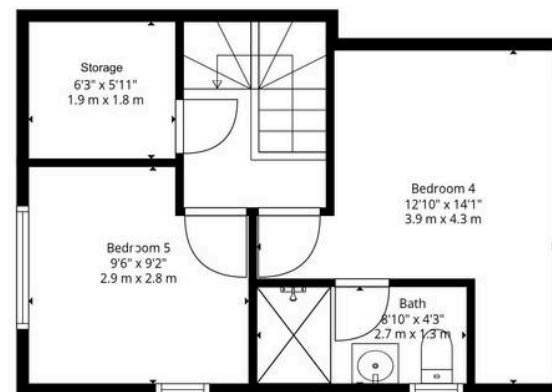
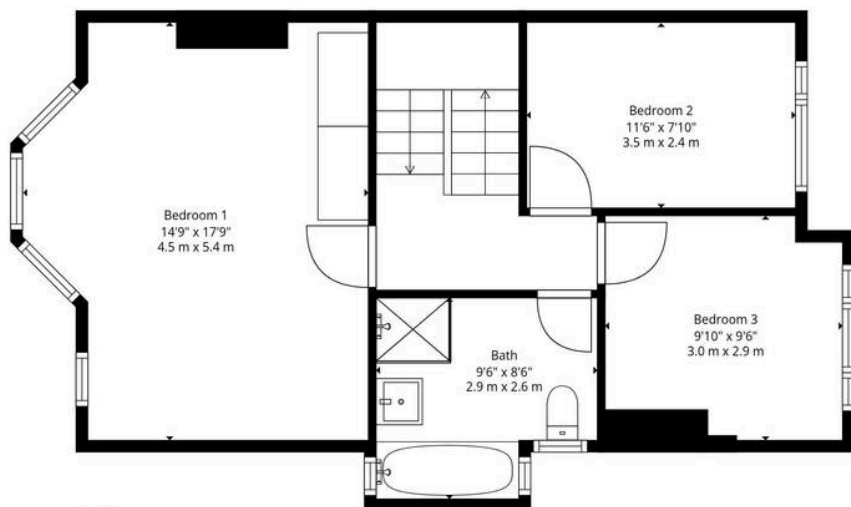
You can include any text here. The text can be modified upon generating your brochure.



You can include any text here. The text can be modified upon generating your brochure.



28 Lancashire Road, Bishopston,
Bristol, BS7 9DL



Total: 1636 sq. Ft, 151 m²

1st Floor: 779 sq. Ft, 72 M², 2nd Floor: 586 sq. Ft, 54 M², 3rd Floor: 271 sq. Ft, 25 m²



Elephant Estate Agents

Elephant, 2 The Promenade Gloucester Road - BS7 8AL

01173700556 • bishopston@elephantlovesbristol.co.uk • www.elephantlovesbristol.co.uk/