



8 Park Lane, Whitefield  
Manchester

In Excess of £700,000  
**cliveanthony**  
sales & lettings

# 8 Park Lane

Whitefield, Manchester

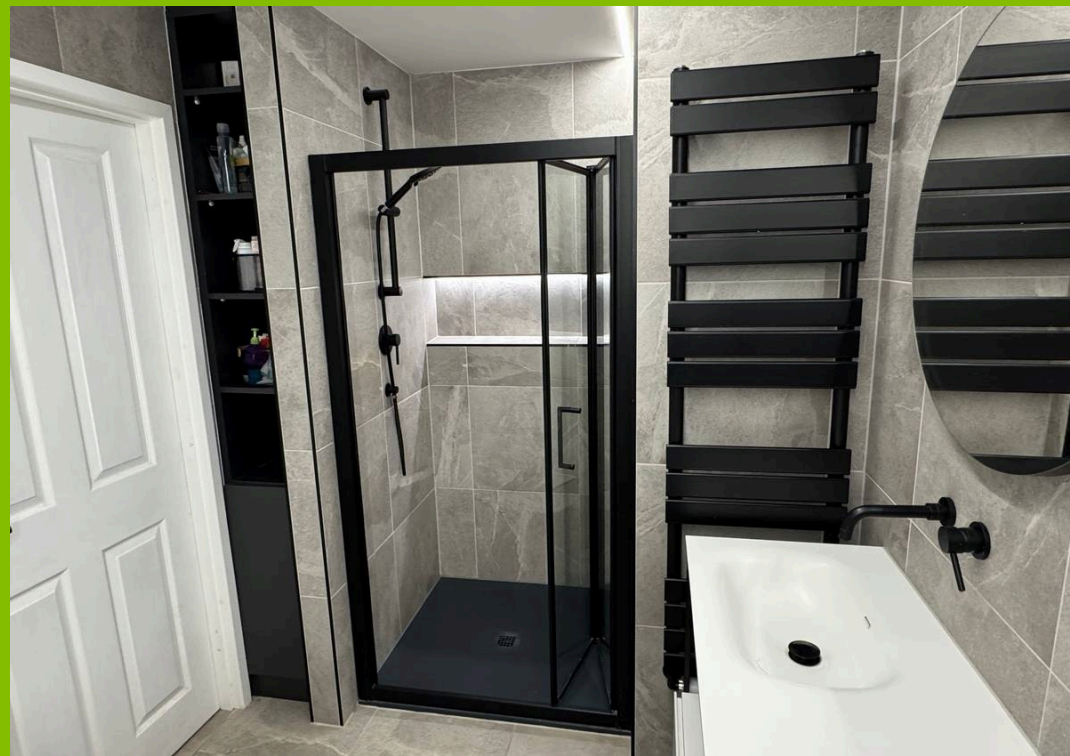
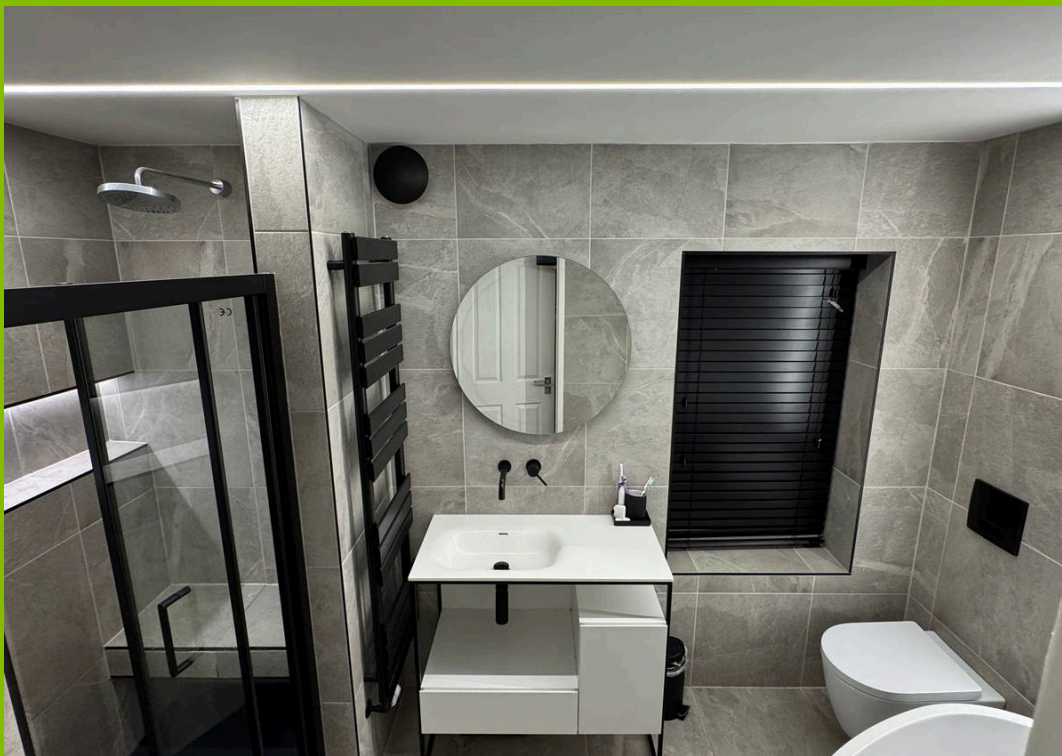
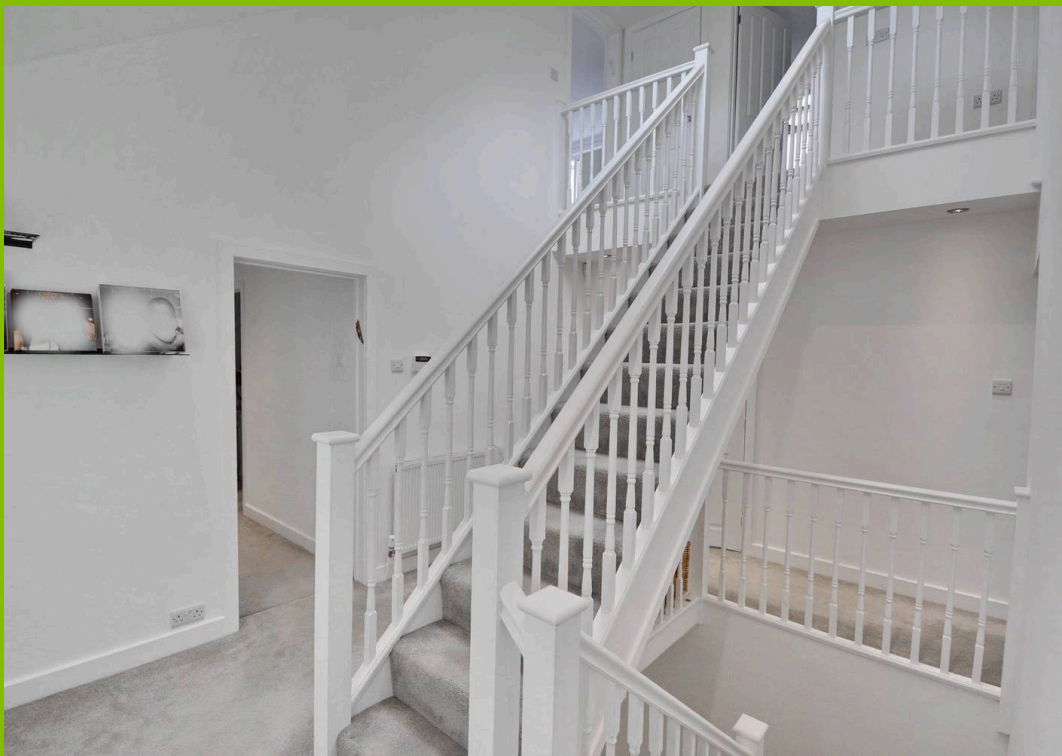
Council Tax band: TBD

Tenure: Leasehold

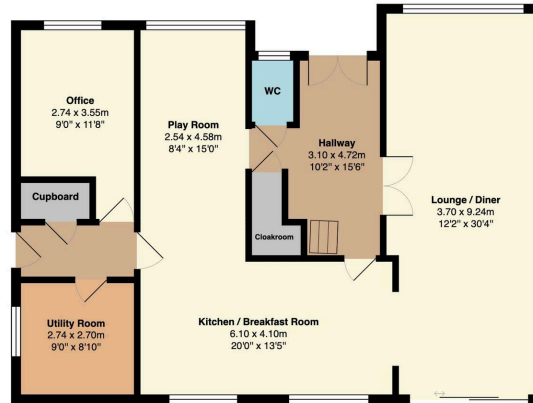
- Stunning Five Bedroom Detached Property
- Over Three Storeys
- Three En Suites/Walk In Wardrobes plus Two Further Bathrooms
- Large Open Plan Lounge/Dining Room
- Family Tv Room Plus Office
- Utility Room Plus Ground Floor WC
- Fitted Kitchen
- Attractive Low Maintenance Rear Garden
- Driveway For Off Road Parking
- Fantastic Family Home



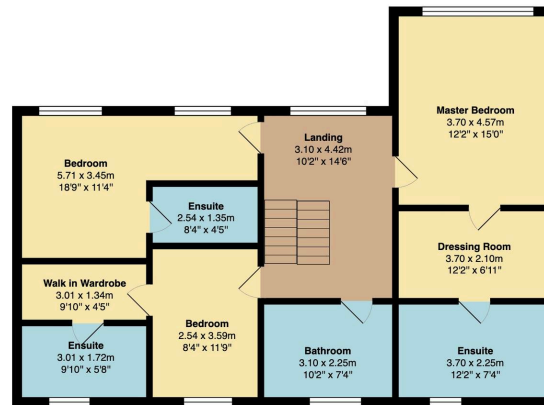




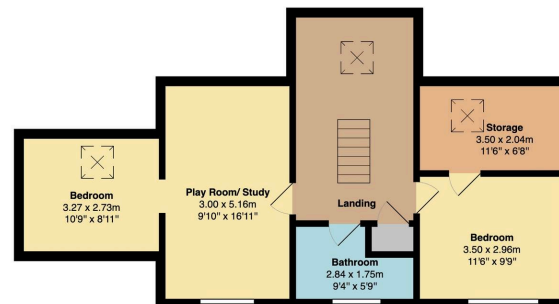




**Ground Floor**  
Area: 109.9 m<sup>2</sup> ... 1183 ft<sup>2</sup>



**1st Floor**  
Area: 96.5 m<sup>2</sup> ... 1039 ft<sup>2</sup>



**2nd Floor**  
Area: 63.9 m<sup>2</sup> ... 688 ft<sup>2</sup>

Total Area: 270.4 m<sup>2</sup> ... 2910 ft<sup>2</sup>



## Clive Anthony Sales & Lettings

487 Bury New Road, Prestwich - M25 1AD

0161 773 1111

[street@cliveanthony.co.uk](mailto:street@cliveanthony.co.uk)

[www.cliveanthony.co.uk](http://www.cliveanthony.co.uk)

**cliveanthony**  
sales & lettings