



Flat 1, 13 Coleridge Road, London
£3,400 pcm

**DAVID
ANDREW** | your
most
valuable
asset

Flat 1

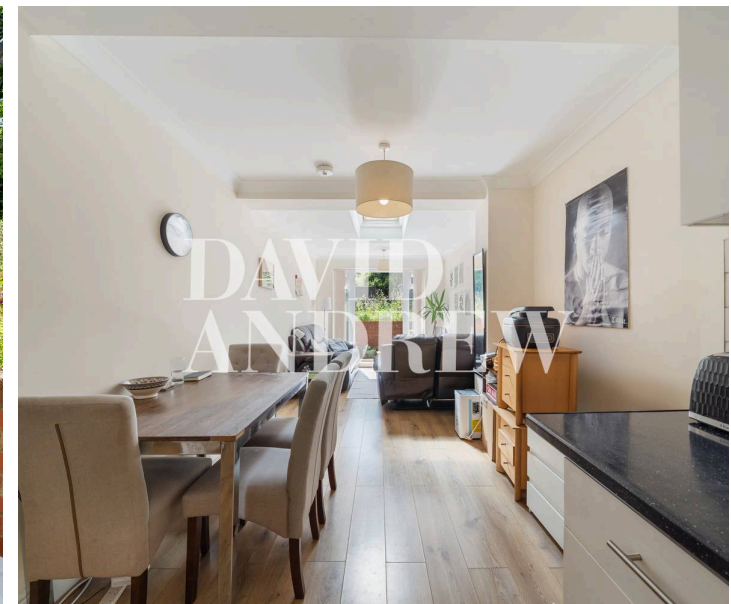
13 Coleridge Road, London

A well-proportioned Three-bedroom apartment conversion, decorated to a good standard and with internal living space of 914 sq ft/85.4 sqm the property has a private garden space. The flat comprises of a good size reception room facing the garden with open plan kitchen diner with mod cons, three good size double bedrooms, one modern bathroom. Coleridge Road is a desirable, quiet location in close proximity to many shops and cafes. It is minute's walk to Stoke Newington and Highbury, as well as local parks (Clissold Park, Finsbury Park) Available furnished from 19th September 2024 Council Tax band: TBD

EPC Energy Efficiency Rating: C

EPC Environmental Impact Rating: C

- Three bedroom apartment
- Available 24th September 2025
- spacious private garden
- Victorian conversion
- 914 Sq ft / 85 SQM
- Offered furnished
- Large living space
- Period conversion



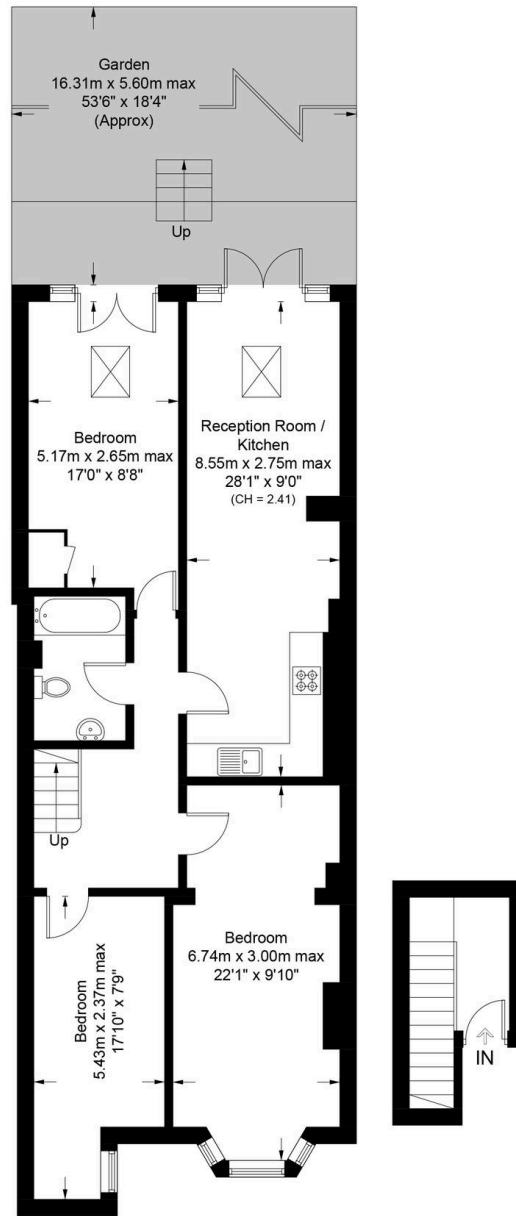




Coleridge Road, N4

Approximate Gross Internal Area = 975 sq ft / 90.6 sq m

DAVID ANDREW | your most valuable asset



Lower Ground Floor

Ground Floor

scan to book a viewing



Certified Property Measurer

This plan is for layout guidance only. Not drawn to scale unless stated. Windows and door openings are approximate. Whilst every care is taken in the preparation of this plan, please check all dimensions, shapes and compass bearings before making any decisions reliant upon them. (ID1219650)



as been exercised in the of these particulars, out the property must not be as representations of fact. Prospective applicants and rely upon their own i those of professional s. David Andrew Estates ility for any error contained in these particulars.

Archway Office

671 Holloway Road
London, N19 5SE

T (0)20 7619 3750

Highbury Office

90 Highbury Park
London, N5 2XE

T (0)20 7354 9111

Finsbury Park Office

167 Stroud Green Road
London, N4 3PZ

T (0)20 7281 2000

Property Management Office

235 Blackstock Road
London, N5 2LL

T (0)20 7354 9222

