



Tiverton Road, London – N15 6RR  
£2,500 pcm

**DAVID  
ANDREW**

your  
most  
valuable  
asset

This beautifully presented three-bedroom flat offers generous proportions and a welcoming atmosphere, making it an ideal choice for those seeking comfort and convenience in North London.

Spanning 90 square metres (973 square feet), the property features three well-sized double bedrooms, each thoughtfully arranged to maximise both space and privacy. The spacious living room area is bathed in natural light, enhanced by double glazed windows that ensure a peaceful and energy-efficient environment. Elegant wooden flooring runs throughout the flat, adding warmth and character while providing a seamless flow between rooms.

Situated within easy walking distance of both Manor House and Harringay Green Lanes stations, residents enjoy excellent transport links to the City and beyond. A variety of local amenities, including shops, cafes, and restaurants, are close at hand, offering a vibrant community atmosphere and every-day convenience. The property is offered furnished and available now.

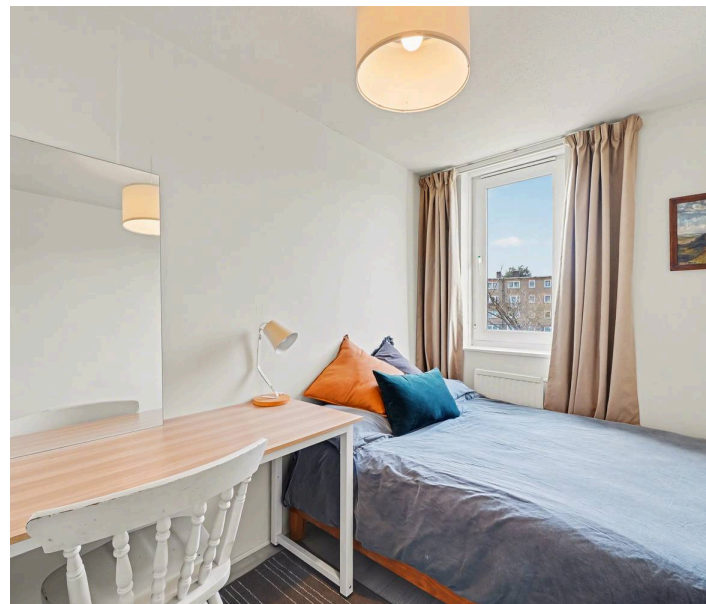
Council Tax band: C

Tenure: Leasehold

EPC Energy Efficiency Rating: B

EPC Environmental Impact Rating: B

- Three Double Bedrooms
- Comprising 90 sq mt / 973 sq ft
- Spacious Living Room Area
- Double Glazed Windows
- Natural Filled Light
- Wooden Flooring Throughout
- Walking Distance to Manor House and Harringay Green Lanes Stations
- Offered Furnished
- Available Now







# Tiverton Road, N15

Approximate Gross Internal Area = 973 sq ft / 90.43 sq m

**DAVID ANDREW** | your most valuable asset



Ground Floor

First Floor

### Archway Office

671 Holloway Road  
London, N19 5SE

T (0)20 7619 3750

### Highbury Office

90 Highbury Park  
London, N5 2XE

T (0)20 7354 9111

### Finsbury Park Office

167 Stroud Green Road  
London, N4 3PZ

T (0)20 7281 2000

### Property Management Office

235 Blackstock Road  
London, N5 2LL

T (0)20 7354 9222

scan to book a viewing



**Certified Property Measurer**

This plan is for layout guidance only. Not drawn to scale unless stated. Windows and door openings are approximate. Whilst every care is taken in the preparation of this plan, please check all dimensions, shapes and compass bearings before making any decisions reliant upon them.



has been exercised in the of these particulars, out the property must not be as representations of fact. Prospective applicants and rely upon their own d those of professional s. David Andrew Estates bility for any error contained in these particulars.

