

Slater Lane, Leyland

PR25 1TL





10 Slater Lane

Leyland, Leyland

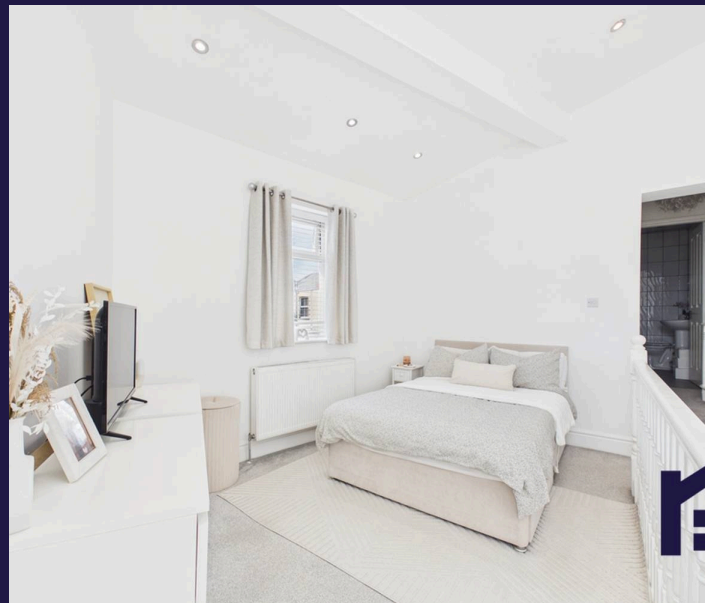
Wonderfully characterful two bedroom property in a popular residential area, ideally located within easy reach of town centre amenities, primary transport routes and countryside walks — perfect for first-time buyers or as a stylish pied-à-terre.

Step into the fabulous open-plan living space, full of charm and personality, creating a welcoming area for both relaxing and entertaining. From here, head up to the dining kitchen, which comprises a range of wall and base units with integrated induction hob, electric oven and grill, and housing the Main combi boiler.

Step outside into the private courtyard garden, a delightful and low-maintenance space that enjoys the morning sun and late afternoon warmth — ideal for unwinding at any time of day.

Back inside, stairs rise to the first floor, where bedroom one is a comfortable double. Bedroom two is currently used as a dressing room, offering flexibility to suit your needs. Completing the accommodation, the bathroom features a massage shower in cubicle, wc, wash hand basin, fully tiled elevations and ladder heated towel rail.

A charming home with plenty of personality in a convenient location so do give us a call to arrange a viewing and make it yours. Council Tax A | EPC D | Leasehold



10 Slater Lane

Leyland, Leyland

Wonderfully characterful two bedroom property in a popular residential area, ideally located within easy reach of town centre amenities, perfect for first-time buyers or as a stylish pied-à-terre.
Council Tax band: A

Tenure: Leasehold

EPC Energy Efficiency Rating: D

EPC Environmental Impact Rating:

- Delightful two bedroom property
- Open plan ground floor
- Courtyard garden
- Virtual tour
- Close to amenities



HOME  TRUTHS

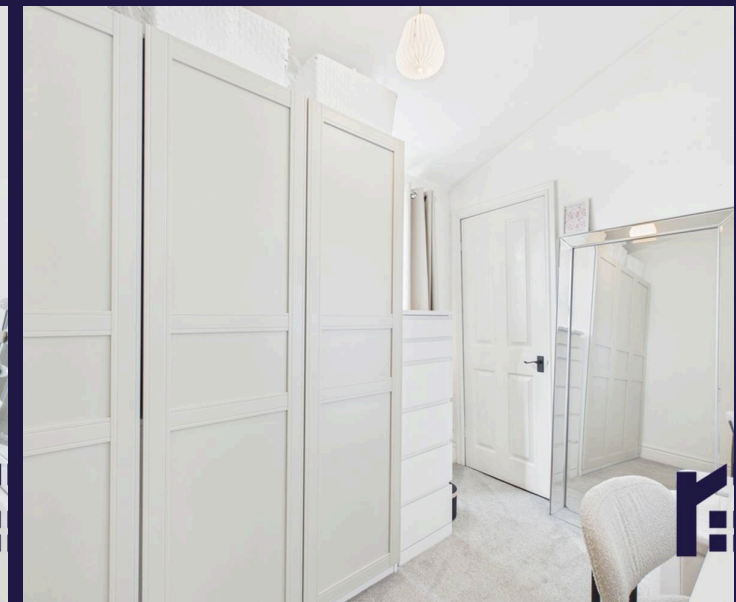
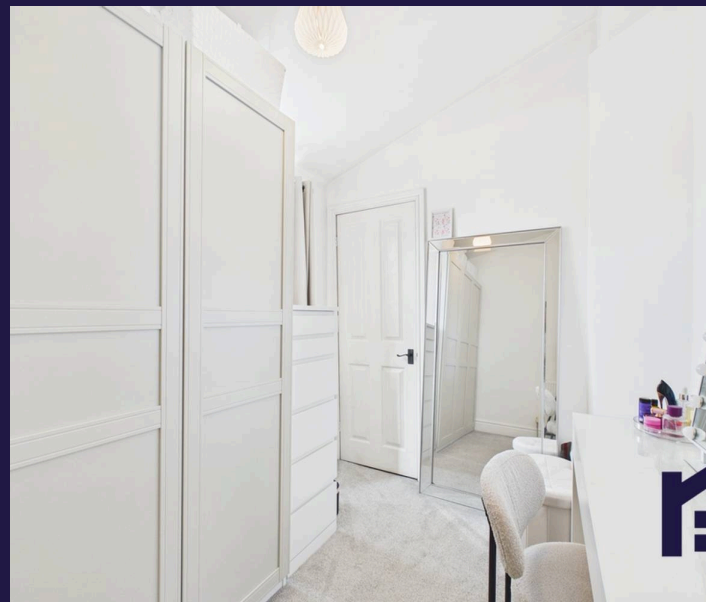
Eccleston Branch

265 The Green, Eccleston, PR7 5TF
01257 451673

Coppull Branch

244 Spendmore Lane, Coppull, PR7 5DE
01257 794588

www.hometruthslancs.co.uk
office@hometruthslancs.co.uk





Floor 1



Floor 2



Approximate total area⁽¹⁾
50.3 m²
540 ft²

Reduced headroom
1.5 m²
17 ft²

(1) Excluding balconies and terraces

Reduced headroom
..... Below 1.5 m/5 ft

Calculations reference the RICS IPMS 3C standard. Measurements are approximate and not to scale. This floor plan is intended for illustration only.