



**3 Amis Court, 41 Common Way**  
Coventry

Offers Over **£110,000**

# 3 Amis Court

Coventry

Ideal For First Time Buyers and Investors - Two Double Bedrooms - Open Plan Living - Juliette Balcony - Close to Local Amenities And Excellent Transport Links - Allocated Parking - No Onward Chain

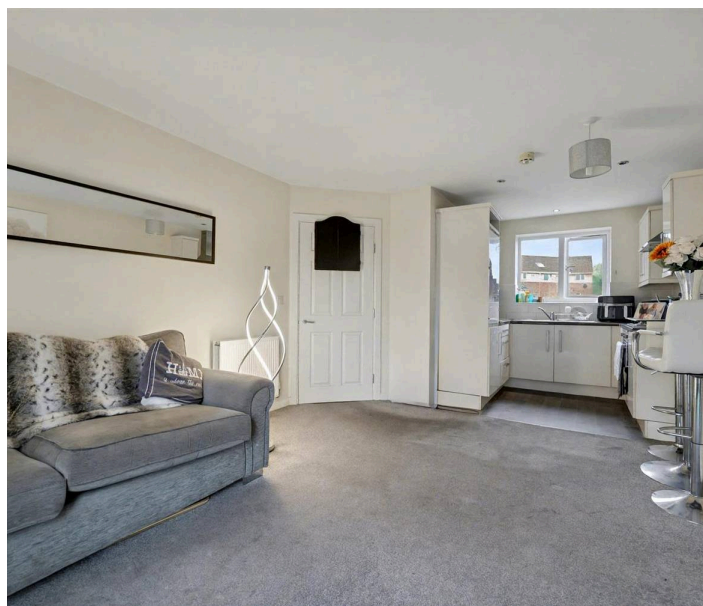
Council Tax band: A

Tenure: Leasehold

EPC Energy Efficiency Rating: B

EPC Environmental Impact Rating:

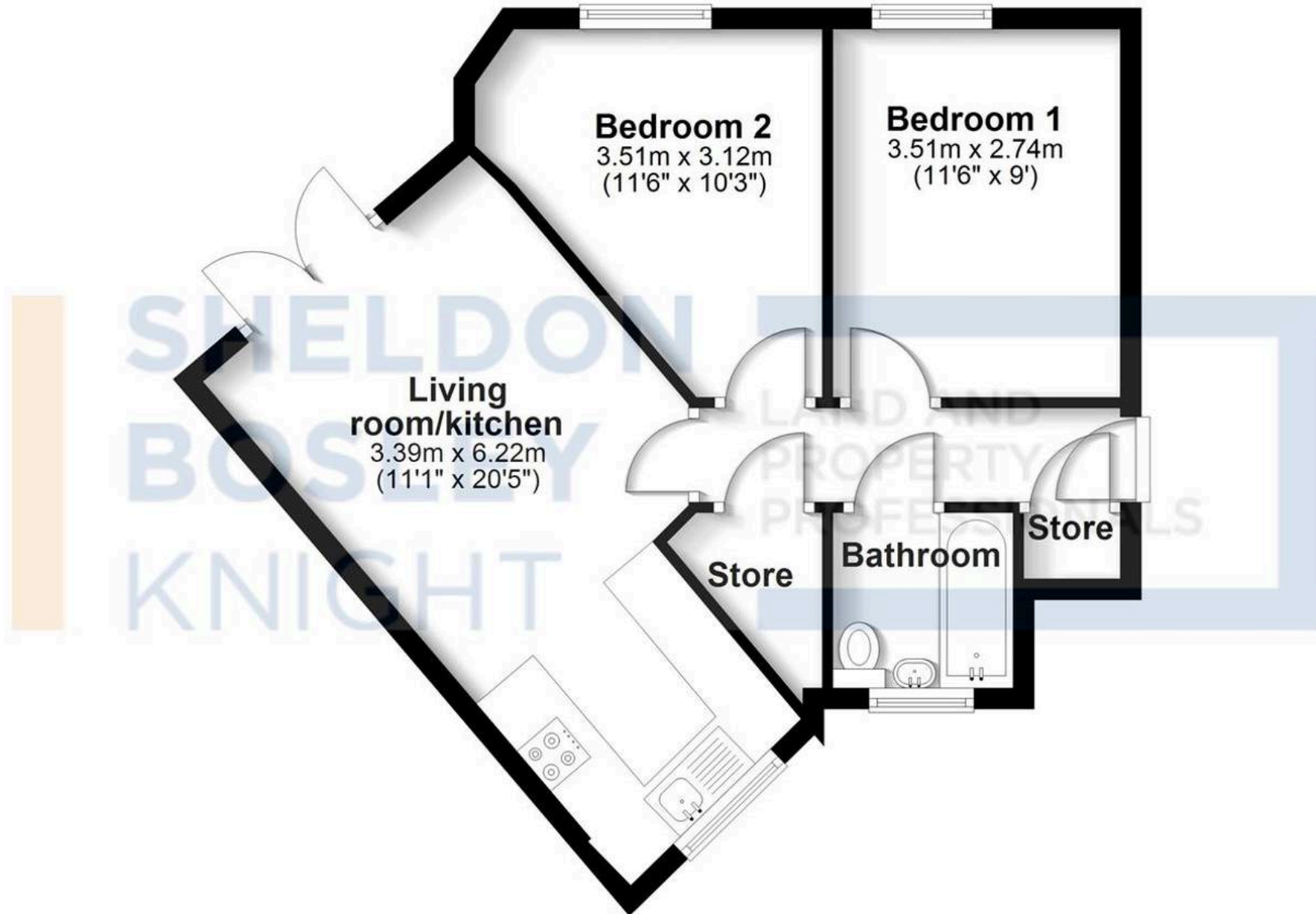
- Modern Apartment
- Ideal For First Time Buyers and Investors
- Two Double Bedrooms
- Open Plan Living
- Juliette Balcony
- Close to Local Amenities And Excellent Transport Links
- Allocated Parking
- Secure Entry System
- No Onward Chain





# First Floor

Approx. 47.6 sq. metres (512.0 sq. feet)



Total area: approx. 47.6 sq. metres (512.0 sq. feet)

All efforts have been made to ensure the measurements are accurate on this floor plan, however these are for guidance purposes only.

Plan produced using PlanUp.



## Sheldon Bosley Knight Coventry

Sheldon Bosley Knight, 29 Warwick Row, Coventry - CV1 1DY

02476258421 • [coventrysales@sheldonbosleyknight.co.uk](mailto:coventrysales@sheldonbosleyknight.co.uk) • [www.sheldonbosleyknight.co.uk/](http://www.sheldonbosleyknight.co.uk/)