

57 Llewelyn Goch, St. Fagans

£629,950 Freehold

**** FIVE BEDROOM DETACHED WITH DETACHED DOUBLE GARAGE ** LARGE REAR GARDEN **** A double bay fronted, well presented, five bedroom detached family house in the sought after location of executive detached homes. Entrance hallway, cloakroom, bay fronted lounge, bay fronted sitting room, modern fitted kitchen and breakfast room with rear bay window and utility room. To the first floor are three bedrooms, primary bedroom with ensuite shower & bathroom room and there is a separate family bathroom. To the second floor are two further double bedrooms and a family shower room. Gas central heating, double glazing. Large lawned rear garden.

Driveway to front leading to the detached double garage. EPC Rating: C

Council Tax band: G

Tenure: Freehold

DESCRIPTION

**** FIVE BEDROOM DETACHED WITH DETACHED DOUBLE GARAGE ** LARGE REAR GARDEN **** A double bay fronted, well presented, five bedroom detached family house in the sought after location of executive detached homes. Entrance hallway, cloakroom, bay fronted lounge, bay fronted sitting room, modern fitted kitchen and breakfast room with rear bay window and utility room. To the first floor are three bedrooms, primary bedroom with ensuite shower & bathroom room and there is a separate family bathroom. To the second floor are two further double bedrooms and a family shower room. Gas central heating, double glazing. Large lawned rear garden. Driveway to front leading to the detached double garage. EPC Rating: C

LOCATION

Situated on the outskirts of the village of St Fagans, which is rural and yet within easy access to the M4 link road, Culverhouse Cross and the Llantrisant Road. Also within a short drive or bus ride to Radyr village providing a number of convenient stores, train station, doctors surgery, tennis & golf clubs and highly regarded primary & secondary schools.

ENTRANCE HALLWAY

Approached via a panelled entrance door leading to the spacious entrance hallway. Staircase to first floor. Tiled flooring. Storage cupboard. Radiator.

CLOAKROOM

Comprising low level wc, wash hand basin. Tiled flooring. Radiator.

LOUNGE

Dimensions: 23' 7" x 11' 6" (7.21m x 3.53 (INTO BAY)m). An excellent sized reception with bay fronted window. French doors to the rear garden. Feature fireplace. Tiled flooring. Radiator.

SITTING ROOM

Dimensions: 11' 8" x 10' 7" (3.58m x 3.24 (INTO BAY)m). A second reception with bay fronted window. Tiled flooring. Radiator.

KITCHEN AND BREAKFAST ROOM

Dimensions: 14' 1" x 10' 7" (4.30m x 3.24m). Appointed along two sides in high gloss white fronts beneath slim line laminate worktop surface. Inset 1.5 bowl with side drainer. Inset five ring gas hob with cooker hood above. Integrated oven. Matching range of eye level wall cupboards. Space for American style fridge freezer. Bay window overlooking the rear garden. Recessed spotlights. Radiator. Door to utility room.

ENSUITE SHOWER ROOM TWO

White suite comprising low level wc, wash hand basin, shower cubicle. Obscured glass window to front. Tiled splash back. Electric shaver point. Extractor fan. Radiator.

BEDROOM THREE

Dimensions: 8' 7" x 8' 5" (2.62m x 2.58 (MAX)m). Overlooking the rear garden. A range of fitted wardrobes. Radiator.

FAMILY BATHROOM

Dimensions: 6' 7" x 5' 6" (2.01m x 1.70m). Comprising low level wc, wash hand basin with storage below, panelled bath with shower mixer tap. Tiled splashback. Obscured glass window to rear. Extractor fan. Radiator.

SECOND FLOOR

LANDING

Approached via a full turning staircase leading to the central landing area. Access to roof space. Radiator.

BEDROOM FOUR

Dimensions: 16' 3" x 11' 0" (4.96m x 3.36m). With windows to front and rear, an excellent sized double bedroom. Eaves storage. Two radiators.

BEDROOM FIVE

Dimensions: 16' 3" x 11' 10" (4.96m x 3.63m). With windows to front and rear, an excellent sized further double bedroom. Fitted wardrobes to one side. Radiator.

FAMILY SHOWER ROOM

White suite comprising low level wc, vanity wash basin with storage below, shower cubicle. Obscured glass window to rear. Electric shaver point. Mosaic style tiled splash back. Extractor fan. Radiator.

OUTSIDE

REAR GARDEN

A sizeable rear garden laid mainly to lawn, enclosed by timber fencing. Outside tap. Outside light. Side access. Access to garage.

FRONT GARDEN

Area of lawn with central pathway. Wide driveway leading to double garage. Gate giving access to the rear garden.

DETACHED DOUBLE GARAGE

Dimensions: 17' 9" x 17' 7" (5.42m x 5.37m). With twin up and over access doors. Power and lighting. Door to rear garden. Window to rear.

DESCRIPTION

**** FIVE BEDROOM DETACHED WITH DETACHED DOUBLE GARAGE ** LARGE REAR GARDEN **** A double bay fronted, well presented, five bedroom detached family house in the sought after location of executive detached homes. Entrance hallway, cloakroom, bay fronted lounge, bay fronted sitting room, modern fitted kitchen and breakfast room with rear bay window and utility room. To the first floor are three bedrooms, primary bedroom with ensuite shower & bathroom room and there is a separate family bathroom. To the second floor are two further double bedrooms and a family shower room. Gas central heating, double glazing. Large lawned rear garden. Driveway to front leading to the detached double garage. EPC Rating: C

ENSUITE SHOWER ROOM TWO

White suite comprising low level wc, wash hand basin, shower cubicle. Obscured glass window to front. Tiled splash back. Electric shaver point. Extractor fan. Radiator.

BEDROOM THREE

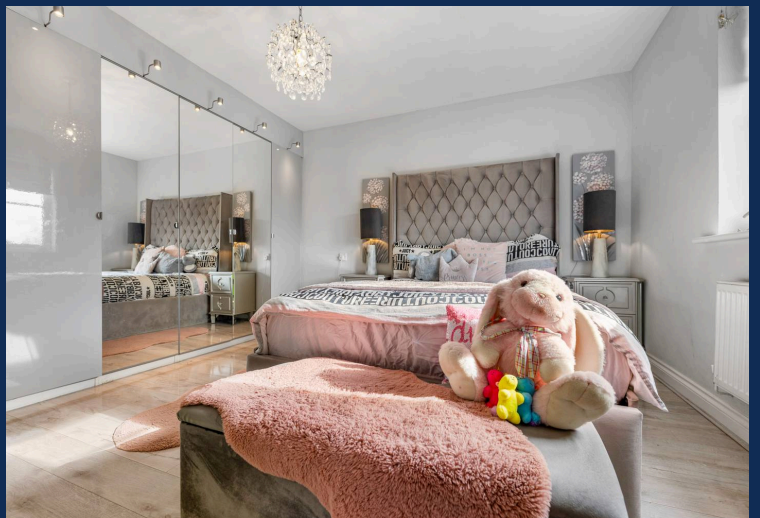
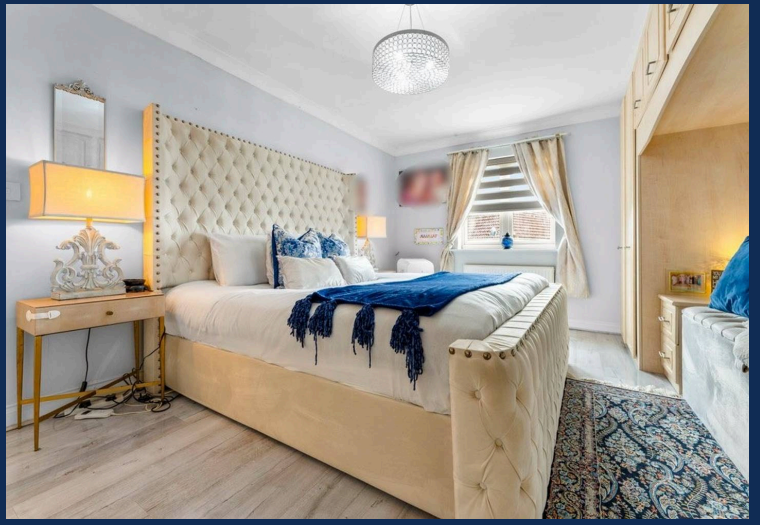
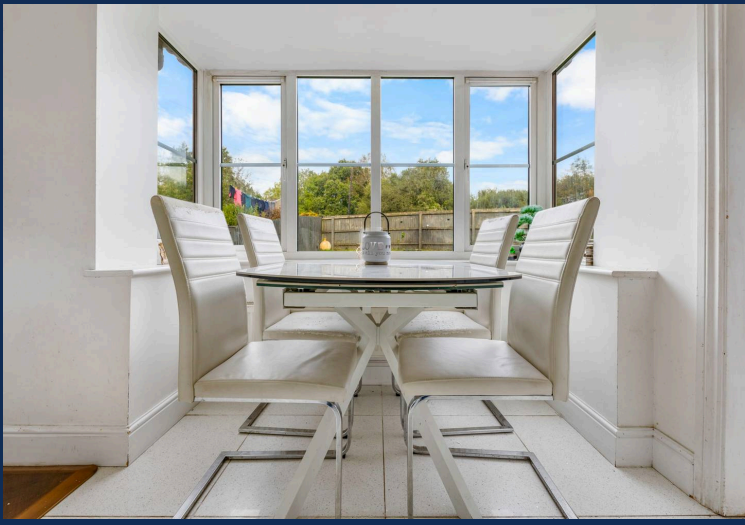
Dimensions: 8' 7" x 8' 5" (2.62m x 2.58 (MAX)m). Overlooking the rear garden. A range of fitted wardrobes. Radiator.

FAMILY BATHROOM

Dimensions: 6' 7" x 5' 6" (2.01m x 1.70m). Comprising low level wc, wash hand basin with storage below, panelled bath with shower mixer tap. Tiled splashback. Obscured







GROUND FLOOR
654 sq.ft. (60.8 sq.m.) approx.



1ST FLOOR
617 sq.ft. (57.3 sq.m.) approx.



2ND FLOOR
469 sq.ft. (43.6 sq.m.) approx.



TOTAL FLOOR AREA : 1741 sq.ft. (161.7 sq.m.) approx.

Whilst every attempt has been made to ensure the accuracy of the floorplan contained here, measurements of doors, windows, rooms and any other items are approximate and no responsibility is taken for any error, omission or mis-statement. This plan is for illustrative purposes only and should be used as such by any prospective purchaser. The services, systems and appliances shown have not been tested and no guarantee as to their operability or efficiency can be given.
Made with Metropix ©2025

You can include any text here. The text can be modified upon generating your brochure.