



34 Timber Hill, Portfield Gate

£90,000 Leasehold

Three-bedroom cedar chalet in Timber Hill Holiday Park with scenic views, large verandah, upgraded features, near Broad Haven Beach. Ideal holiday let or second home. Furniture negotiable.



Council Tax band: A

Tenure: Leasehold

- Cedar Holiday Chalet
- Extended Balcony
- Chain Free
- New Roof
- 3 Bedrooms
- Idyllic Location with beautiful views

Living Room

Dimensions: 4.87 x 3.63 (15'11" x 11'10"). Light and spacious living area with large window overlooking scenic views

Kitchen

Dimensions: 2.44 x 1.59 (8'0" x 5'2"). Range of fitted base and wall units, ample work surfaces, appliance space, window to side, door to balcony

Bedroom 1

Dimensions: 2.42 x 2.42 (7'11" x 7'11"). Window to rear.
Double bedroom with storage, fitted carpet, window to rear, panel heater.

Bedroom 2

Dimensions: 2.49 x 1.83 (8'2" x 6'0"). Window to rear, fitted carpet, panel heater, hanging space.

Bedroom 3

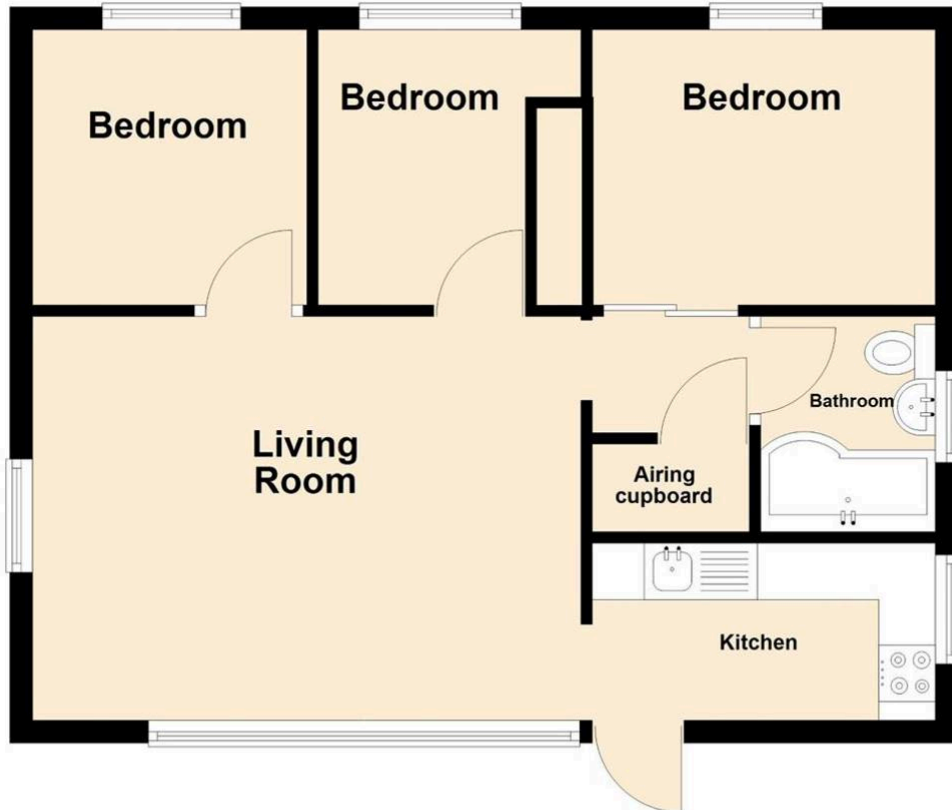
Dimensions: 3.22 max x 3.0 max (10'6" max x 9'10" max).
Window to rear, fitted carpet, panel heater

Bathroom

Dimensions: 2.33 x 1.51 (7'7" x 4'11"). Window to side, P-shaped bath with shower over, WC and vanity wash hand basin.

Ground Floor

Approx. 43.7 sq. metres (470.3 sq. feet)



Total area: approx. 43.7 sq. metres (470.3 sq. feet)

34 Timber Hill

