



8 Oakfield, Lodsworth, Petworth, GU28 9BL

Offers In the Region Of £325,000





8 Oakfield, Lodsworth

Freehold / EPC:D / Council Tax Band: C

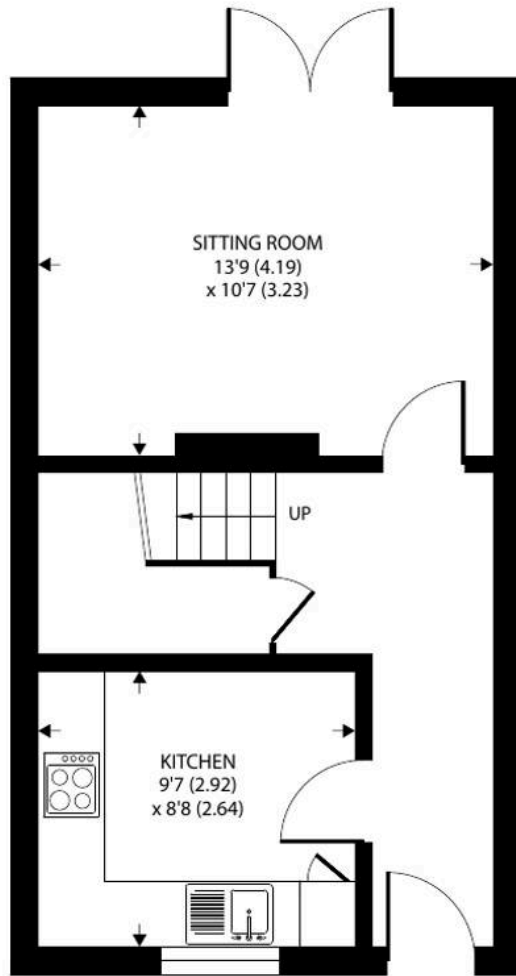
- West Facing Garden
- Backs Onto Fields
- Nearby Countryside Walks
- Loft Conversion
- Parking To The Front and Rear
- Log Burning Stove
- Village Shop and Pub
- Sought After Location
- No Onward Chain

Nestled in the heart of the picturesque and highly sought-after village of Lodsworth, this charming three-bedroom mid-terrace house offers a perfect blend of traditional character and modern living.

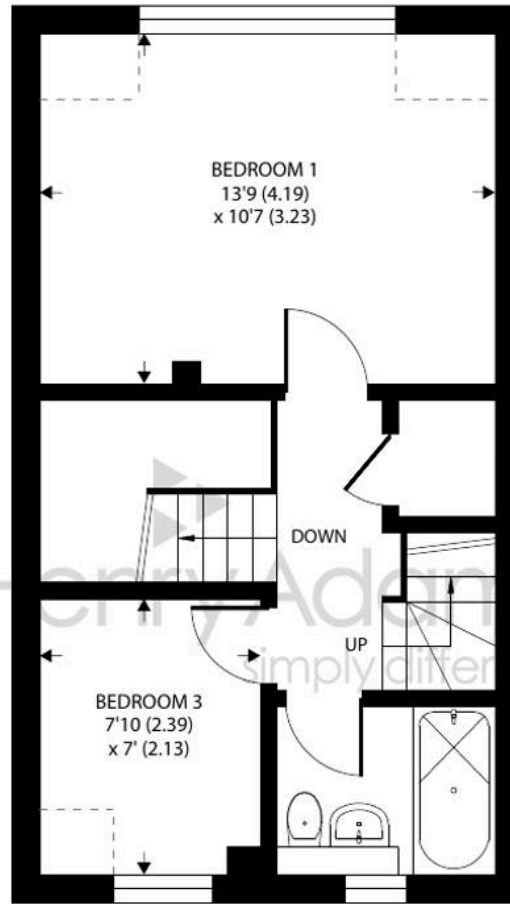
This delightful home enjoys an enviable position within the South Downs National Park, surrounded by stunning countryside. The ground floor boasts a well-appointed kitchen with a bright breakfast area, providing ample space for informal dining. The adjacent sitting room is a welcoming and comfortable space, complete with a log-burning stove, ideal for cosy evenings. Double doors lead out to a low-maintenance, west-facing garden that captures the afternoon sun, making it a perfect spot for outdoor relaxation. Side access offers further practicality.

The first floor comprises two well-proportioned bedrooms and a family bathroom, all thoughtfully designed to maximise space and light. A cleverly integrated space-saver staircase provides access to the loft conversion, a versatile third bedroom or office that enjoys views over the surrounding village green and countryside.

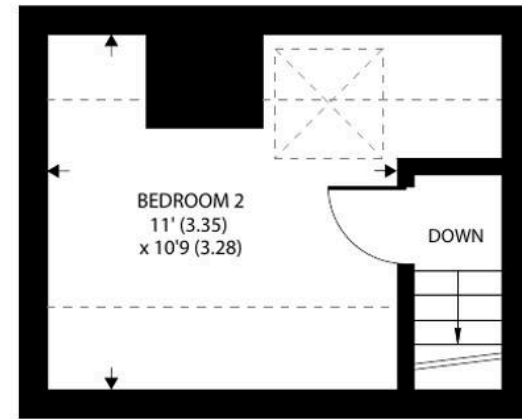




GROUND FLOOR



FIRST FLOOR



SECOND FLOOR



Denotes restricted head height

Approximate Area = 751 sq ft / 70 sq m
 Limited Use Area(s) = 95 sq ft / 9 sq m
 Total = 846 sq ft / 79 sq m

For identification only - Not to scale





Henry Adams – Midhurst

Henry Adams, Bepton Court, 2 West Street – GU29 9NF

01730 817370 • midhurst@henryadams.co.uk • www.henryadams.co.uk/

Agents Note – Our particulars are for guidance only and are intended to give a fair overall summary of the property. They do not form part of any contract or offer, and should not be relied upon as a statement or representation of fact. Measurements, areas and distances are approximate only. Photographs may include lifestyle shots and pictures of local views.