



## Flat 10, Willesden House Bush Row, Haverfordwest

£650 pcm

1 bedroom flat in Haverfordwest with open plan living room/kitchen, bathroom and hallway. Close to schools, shops and leisure centre. Reposit and cash deposit options available.

Council Tax band: A

EPC Energy Efficiency Rating: D

EPC Environmental Impact Rating: C



### **Kitchen**

Lino flooring, free standing cooker with over head extractor fan

### **Living Room**

Carpeted area with 2 sash windows.

### **Bathroom**

Shower cubicle, WC & wash hand basin. Tiled flooring

### **Bedroom**

Carpeted area with 2 sash windows

### **General Notes**

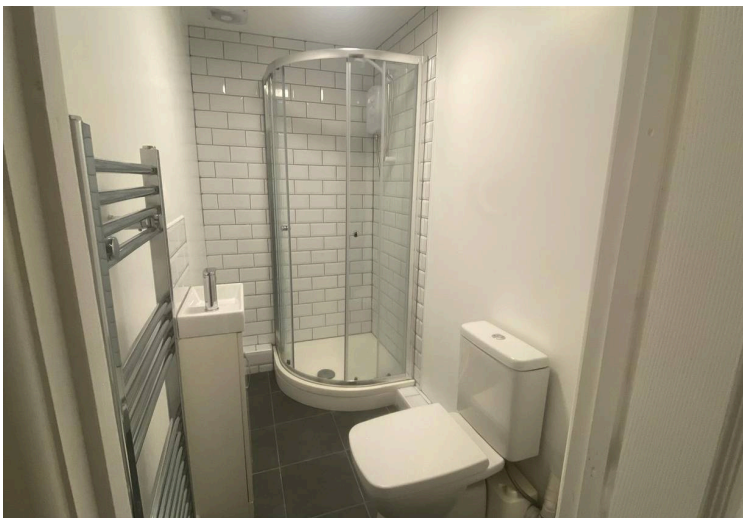
Security Deposit: £750 Heating: Gas Services: All Mains Council Tax Band: A Local Authority: Pembrokeshire County Council Broadband: Superfast available in area Mobile coverage: Likely / Limited depending on provider APPLICANTS SHOULD MAKE THEIR OWN ENQUIRES FOR MOBILE & BROADBAND COVERAGE

### **Viewings**

By appointment with R K Lucas & Son

### **Fees**

For a full list of Contract Holder (tenant) fees, visit [www.rklucas.co.uk/pdf/Contract-Holder-\(Tenant\)-Fees.pdf](http://www.rklucas.co.uk/pdf/Contract-Holder-(Tenant)-Fees.pdf)



Energy Efficiency Rating		Current	Potential
Very energy efficient - lower running costs			
(92+)	<b>A</b>		
(81-91)	<b>B</b>		
(69-80)	<b>C</b>		
(55-68)	<b>D</b>		
(39-54)	<b>E</b>		
(21-38)	<b>F</b>		
(1-20)	<b>G</b>		
Not energy efficient - higher running costs			
		68	76
England, Scotland & Wales			
		EU Directive 2002/91/EC	

Environmental Impact (CO <sub>2</sub> ) Rating		Current	Potential
Very environmentally friendly - lower CO <sub>2</sub> emissions			
(92+)	<b>A</b>		
(81-91)	<b>B</b>		
(69-80)	<b>C</b>		
(55-68)	<b>D</b>		
(39-54)	<b>E</b>		
(21-38)	<b>F</b>		
(1-20)	<b>G</b>		
Not environmentally friendly - higher CO <sub>2</sub> emissions			
		74	85
England, Scotland & Wales			
		EU Directive 2002/91/EC	