

HOME  TRUTHS

22 Northlands, Leyland

Leyland


£900 pcm



22 Northlands

Leyland, Leyland

This beautifully presented and newly decorated two-bedroom semi-detached property, offering spacious and versatile accommodation, perfectly suited to modern living.

The property welcomes you via a porch entrance, leading into a bright and elegant reception room—ideal for both relaxing and entertaining. To the rear, a well-equipped fitted kitchen provides ample storage and preparation space, flowing through to a delightful conservatory which offers an additional reception area overlooking the garden, perfect for dining or working from home.

The first floor hosts two generously proportioned double bedrooms, both benefiting from excellent natural light. The main bedroom is fitted with ample of storage and fitted wardrobe. The three-piece bathroom comprises, low-level WC, wash hand basin and panelled bath with electric overhead shower.

Externally, the property enjoys a sizeable, low-maintenance rear garden, a garage for additional storage, and a private driveway providing off-road parking.



22 Northlands

Leyland, Leyland

Well-presented two-bedroom semi-detached home with detached garage, off-road parking and a lovely rear garden. Neutral décor throughout. Available to let immediately.

- Available Now
- Virtual tour
- Two-bedroom semi-detached home
- Spacious rear garden with patio and lawn
- Detached garage with light and power

Available now. Deposit £1038, including a holding deposit of £207

Council Tax Band B.



HOME  TRUTHS

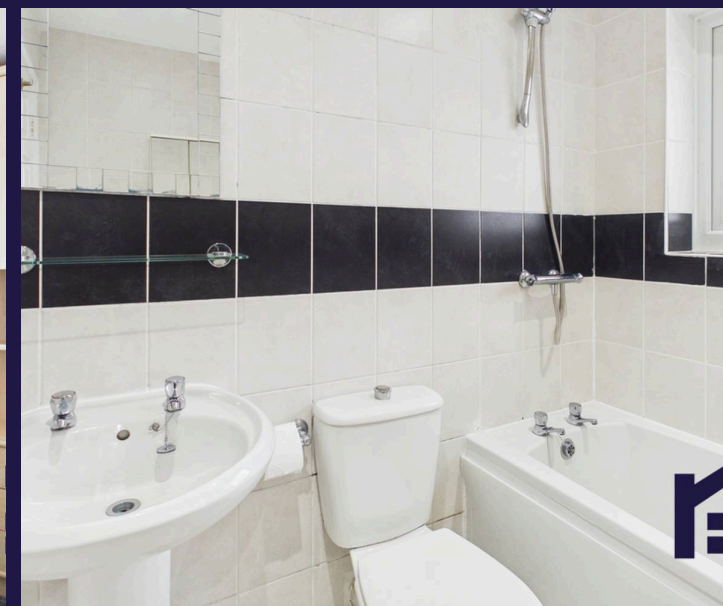
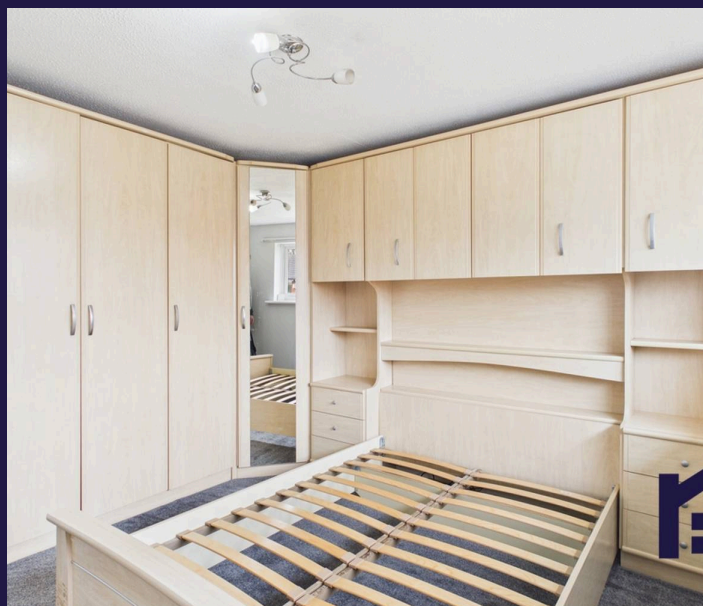
Eccleston Branch

265 The Green, Eccleston, PR7 5TF
01257 451673

Coppull Branch

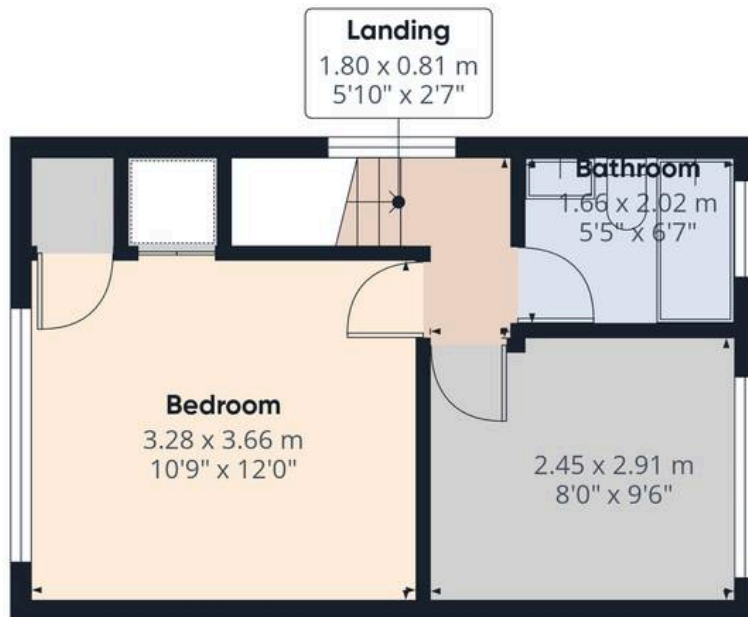
244 Spendmore Lane, Coppull, PR7 5DE
01257 794588

www.hometruthslancs.co.uk
office@hometruthslancs.co.uk

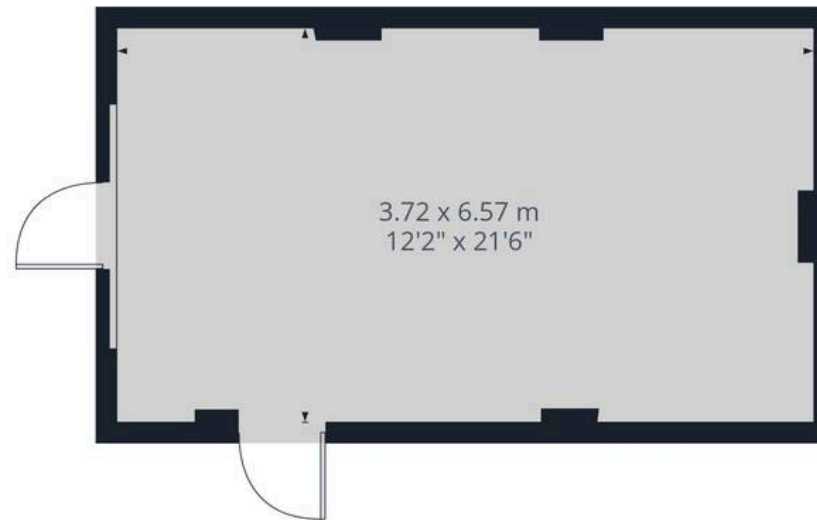




Floor 1 Building 1



Floor 2 Building 1



Floor 1 Building 2

Approximate total area⁽¹⁾

83.8 m²
902 ft²

(1) Excluding balconies and terraces

Calculations reference the RICS IPMS 3C standard. Measurements are approximate and not to scale. This floor plan is intended for illustration only.

GIRAFFE360