



22 Glastonbury Road, Hove
£950,000

**MANSELL
McTAGGART**
Trusted since 1947

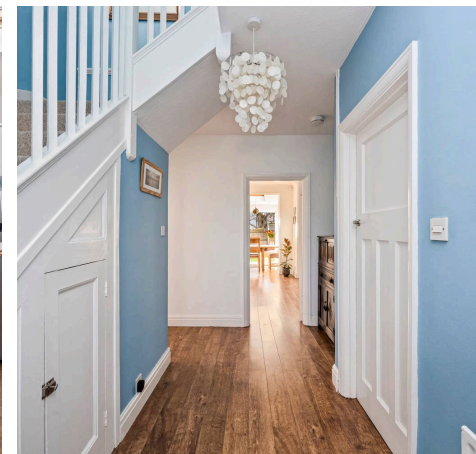
22 Glastonbury Road

Hove, Hove

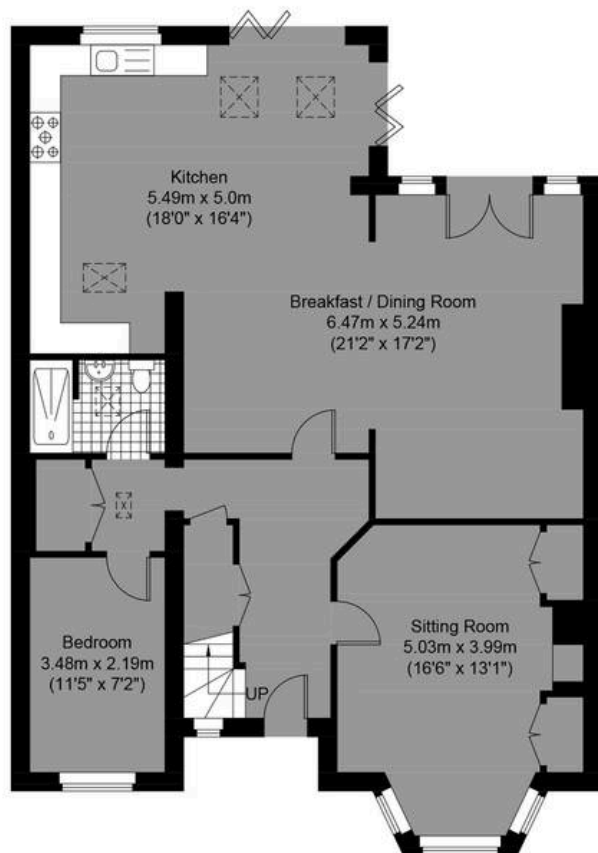
Council Tax band: E

Tenure: Freehold

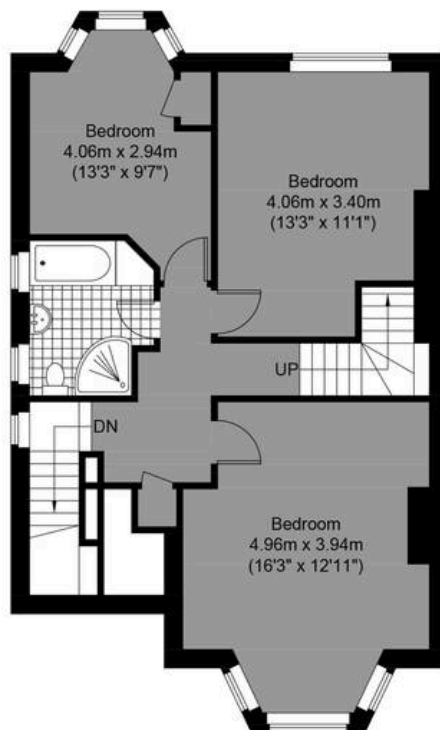
- Viewings Start From Saturday 28th March
- Five Bedroom Semi-Detached House With Off Road Parking
- Sought After Hove Location, South Of New Church Road And Walking Distance To Hove Seafront
- Stunning Open Plan Kitchen Dining Room With Doors Leading Out To The South Facing Garden
- Separate Living Room Downstairs & Bathroom
- Exclusive To Mansell McTaggart



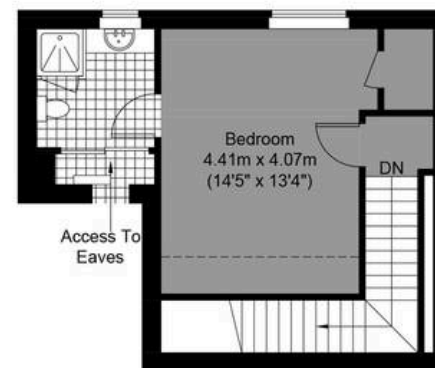
Approximate Gross Internal Area= 186.06 sq m / 2002.72 sq ft



Ground Floor
Approximate Floor Area
1040.44 sq ft (96.66 sq m)



First Floor
Approximate Floor Area
659.07 sq ft (61.23 sq m)



Second Floor
Approximate Floor Area
303.21 sq ft (28.17 sq m)

Glastonbury Road



**MANSELL
McTAGGART**
Trusted since 1947

Illustration for identification purposes only, measurements are approximate, not to scale.

© Mansell McTaggart



Mansell McTaggart Hove

170 Church Road, Hove - BN3 2DJ

01273 044929

hove@mansellmctaggart.co.uk

www.mansellmctaggart.co.uk/branch/hove/

