



Tufnell Park Road, London – N7 0DT

**DAVID
ANDREW**

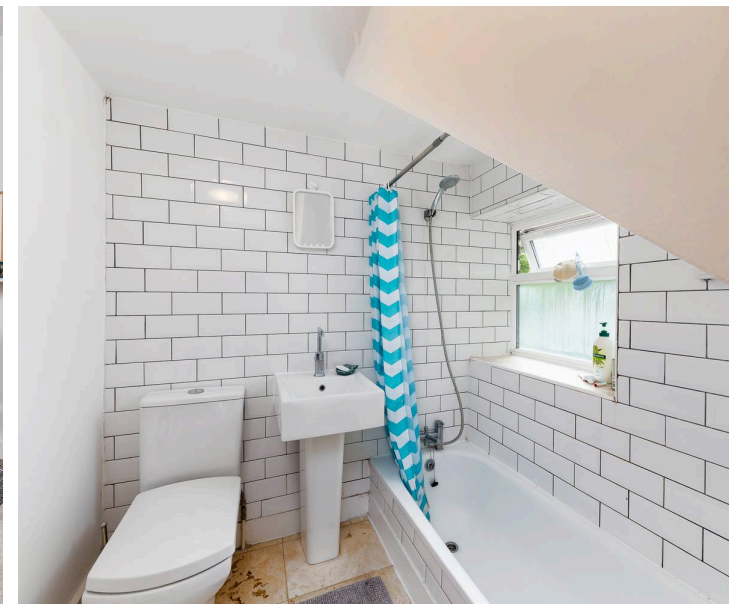
your
most
valuable
asset

A bright and spacious one-bedroom apartment, recently refurbished arranged across 624 sq ft (58 sq mt), set within an attractive and characterful period conversion in the desirable area of Tufnell Park.

The bright and airy interior features a spacious living area with double glazed windows that flood the space with natural light, complemented by a sleek, fully fitted kitchen ideal for both every-day living and entertaining. The bedroom provides ample storage and a peaceful retreat, while the high-quality finish throughout ensures a move-in ready home. Step outside to enjoy your own private outdoor space, a rare find in this sought-after location. The property will benefit from a brand-new kitchen with modern appliances, resulting in a fully fitted, contemporary space. It will also feature new flooring and fencing, along with comprehensive redecoration, including updated design and paintwork throughout. While the property currently has single glazing, new double-glazed windows are in the process of being installed.

Offered either part-furnished or furnished, this inviting flat is just a short walk from Tufnell Park and Holloway Road stations, placing excellent transport links and a vibrant selection of local amenities within easy reach. Offered either part-furnished or furnished and available from the 5th of May.

- One Bedroom Apartment
- Private Outdoor Space
- Comprising 624 sq ft / 58 sq mt
- Recently Fully Refurbished to a High Standard
- Fully Fitted Kitchen
- Bright and Modern Interior
- Double Glazed Windows
- Walking Distance to Tufnell Park and Holloway Road Stations
- Offered Part - furnished or Furnished
- Available 5th of May

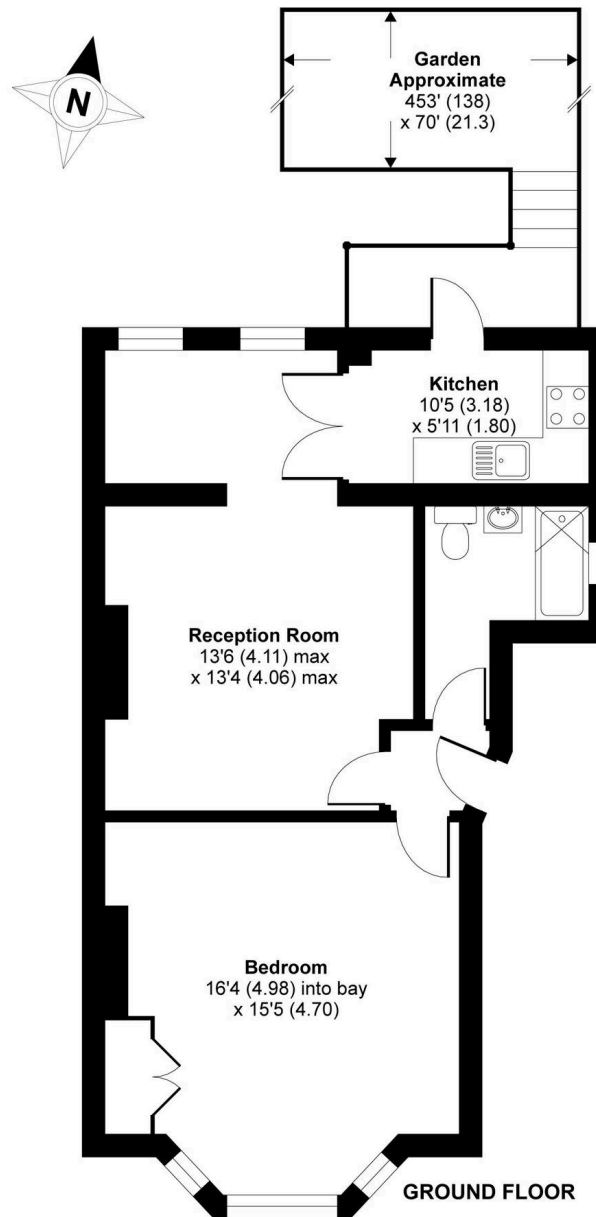




Tufnell Park Road, London, N7

APPROX. GROSS INTERNAL FLOOR AREA 619 SQ FT 57.5 SQ METRES

**DAVID
ANDREW** | your
most
valuable
asset



Archway Office

671 Holloway Road
London, N19 5SE

T (0)20 7619 3750

Highbury Office

90 Highbury Park
London, N5 2XE

T (0)20 7354 9111

Finsbury Park Office

167 Stroud Green Road
London, N4 3PZ

T (0)20 7281 2000

Property Management Office

235 Blackstock Road
London, N5 2LL

T (0)20 7354 9222

*scan to book
a viewing*



Whilst every attempt has been made to ensure the accuracy of the floor plan contained here, measurements of doors, windows and rooms are approximate and no responsibility is taken for any error, omission or misstatement. These plans are for representation purposes only as defined by RICS Code of Measuring Practice and should be used as such by any prospective purchaser. Specifically no guarantee is given on the total square footage of the property if quoted on this plan. Any figure given is for initial guidance only and should not be relied on as a basis of valuation.

Copyright nichecom.co.uk 2016 Produced for David Andrew REF : 143084

Note:

are has been exercised in the
ion of these particulars,
its about the property must not be
upon as representations of
its or fact. Prospective applicants
ake and rely upon their own
; and those of professional
tatives. David Andrew Estates
no liability for any error contained
in these particulars.



safeagent