



4 The Willows, Off Manor Farm Court, Selsey

Guide Price £155,000

4 The Willows

Off Manor Farm Court, Selsey, Chichester

Introducing a charming retirement cottage nestled within a picturesque complex offering serene views of communal gardens.

The modern kitchen is equipped with built-in appliances, perfect for culinary enthusiasts. A spacious double bedroom features a fitted wardrobe, providing ample storage space. Residents and visitors can utilise the convenient parking area which is first come, first serve. The communal lounge presents a welcoming space, complemented by a pre-bookable guest suite for visitors.

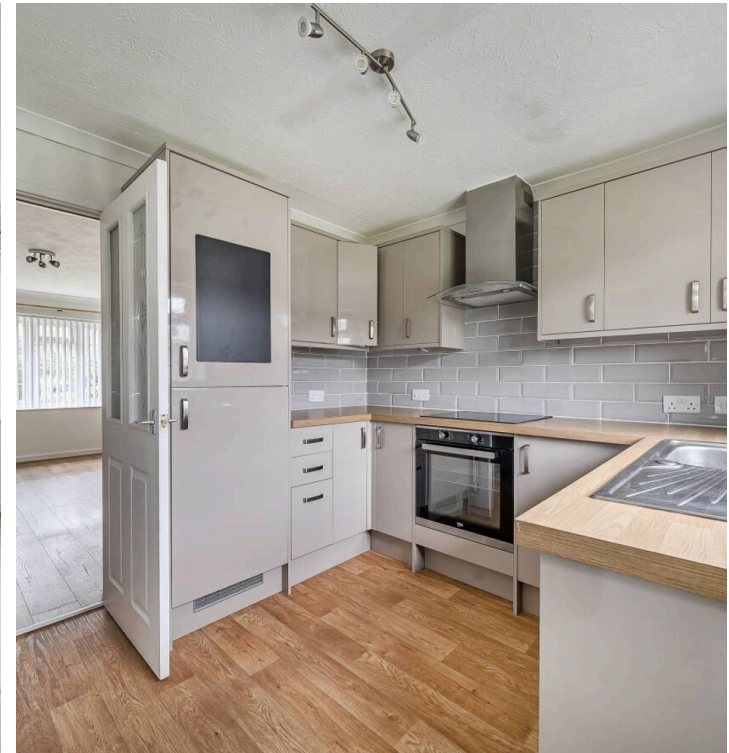
This retirement cottage offers a peaceful and secure living environment, ideal for those seeking a retreat away from the hustle and bustle. Experience a tranquil lifestyle in this well-appointed property, designed for comfortable and relaxed living.

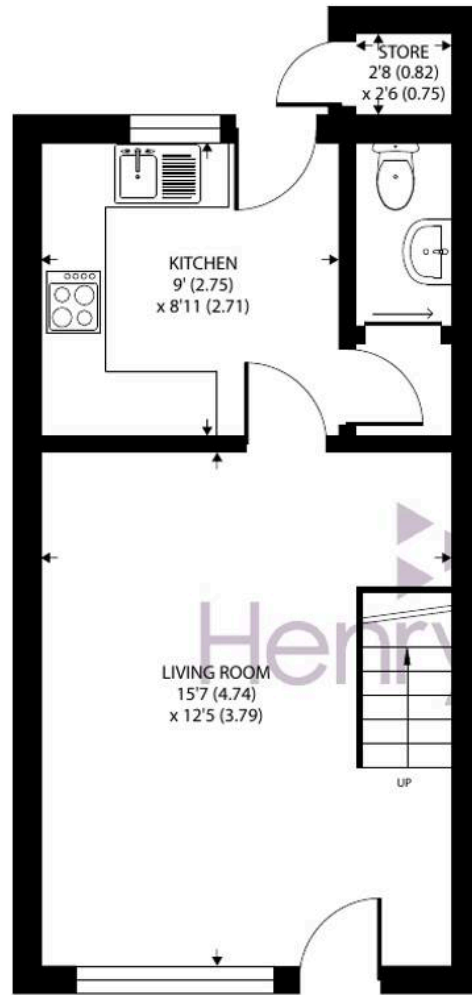
Council Tax band: B - £1963.41

Tenure: Leasehold

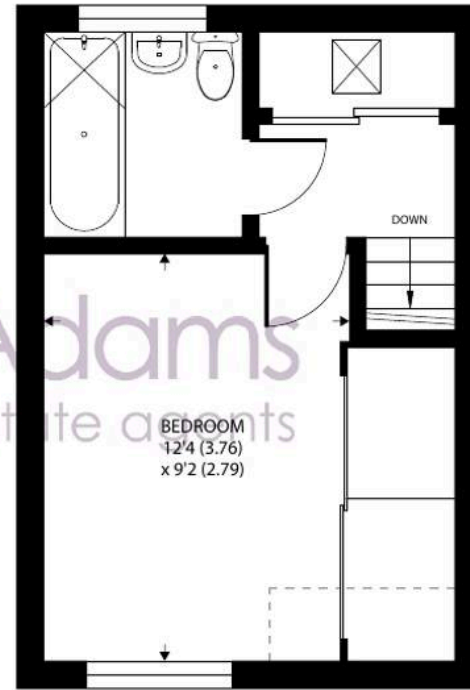
EPC Energy Efficiency Rating: D

- Retirement cottage in delightful complex overlooking communal gardens
- Modern Kitchen with Built in Appliances
- Double Bedroom With Fitted Wardrobe
- Parking Area For Residents & Visitors
- Commual Lounge With Guest Suite (Pre-Bookable)
- Double Glazing & Electric Heating





GROUND FLOOR



FIRST FLOOR

Denotes restricted head height

The Willows, Manor Farm Court, Selsey, Chichester, PO20

Approximate Area = 534 sq ft / 49.6 sq m

Limited Use Area(s) = 13 sq ft / 1.2 sq m

Outbuilding = 7 sq ft / 0.6 sq m

Total = 554 sq ft / 51.4 sq m

For identification only - Not to scale



Floor plan produced in accordance with RICS Property Measurement 2nd Edition, Incorporating International Property Measurement Standards (IPMS2 Residential). © natchecom 2025. Produced for Henry Adams. REF: 1356867



Henry Adams - Selsey

Henry Adams LLP, 122 High Street, Selsey - PO20 0QE

01243 606789

selsey@henryadams.co.uk

www.henryadams.co.uk/

Agents Note - Our particulars are for guidance only and are intended to give a fair overall summary of the property. They do not form part of any contract or offer, and should not be relied upon as a statement or representation of fact. Measurements, areas and distances are approximate only. Photographs may include lifestyle shots and pictures of local views. No undertaking is given as to the structural condition of the property, or any necessary consents or the operating ability or efficiency of any service, system or appliance. Please ask if you would like further information, especially before you travel to the property.