

58 Teversal Avenue, Nottingham

£3,494 pcm Freehold

Bills Included Option Available • 6 Double Bedrooms • 2 Bathrooms • TV Included in Bedrooms • Close to NTU • Close to City Centre • Great Transport Links • Close to Local Shops, Cafes and Bars



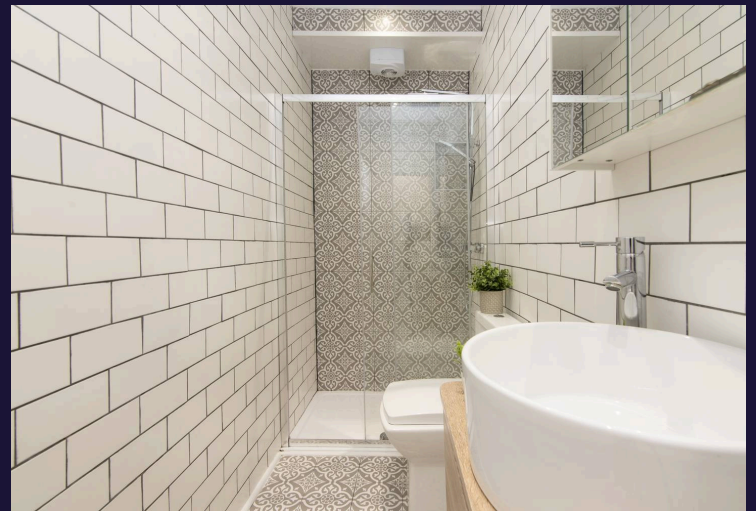
| Your Next Student Home for 2026/27 | £137pppw | Bills Included option available | 49 Week Contract | 360 Virtual Tour Available | 6 Double Bedrooms | 2 Bathrooms | Council Tax band: B

Tenure: Freehold

EPC Energy Efficiency Rating: C

EPC Environmental Impact Rating: D

- Bills Included Option Available
- 6 Double Bedrooms
- 2 Bathrooms
- TV Included in Bedrooms
- Close to NTU
- Close to City Centre
- Great Transport Links
- Close to Local Shops, Cafes and Bars



Kitchen

The kitchen is fitted with a electric cooker, oven and a fridge/freezer with plenty of storage available, as well as a small breakfast bar.

Open Plan Lounge/Dining Room

The lounge has comfortable sofas with a TV. The dining room is fitted with a large table with 6 chairs.

6 Double Bedrooms

Each room has a desk, chest of drawers and wardrobe for ample storage.

2 Bathrooms

Fitted with showers, toilets and sinks these bathrooms are well situated to suit the whole house.

YARD

Patio



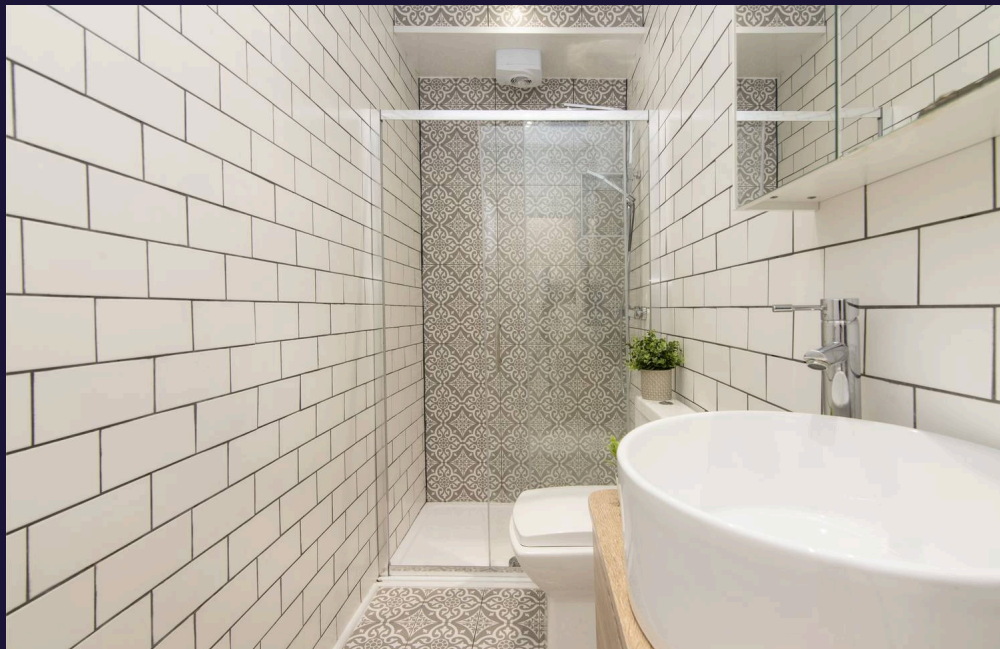
| Your Next Student Home for 2026/27 | £137pppw | Bills Included option available | 49 Week Contract | 360 Virtual Tour Available | 6 Double Bedrooms | 2 Bathrooms |

Council Tax band: B

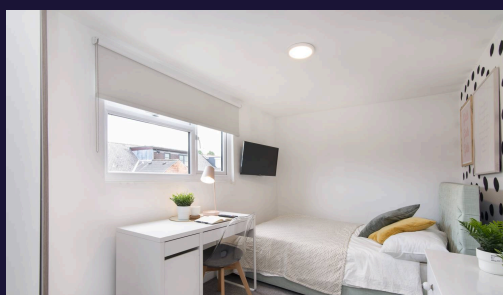
Tenure: Freehold

EPC Energy Efficiency Rating: C

EPC Environmental Impact Rating: D



- › Bills Included Option Available
- › 6 Double Bedrooms
- › 2 Bathrooms
- › TV Included in Bedrooms
- › Close to NTU
- › Close to City Centre
- › Great Transport Links
- › Close to Local Shops, Cafes and Bars

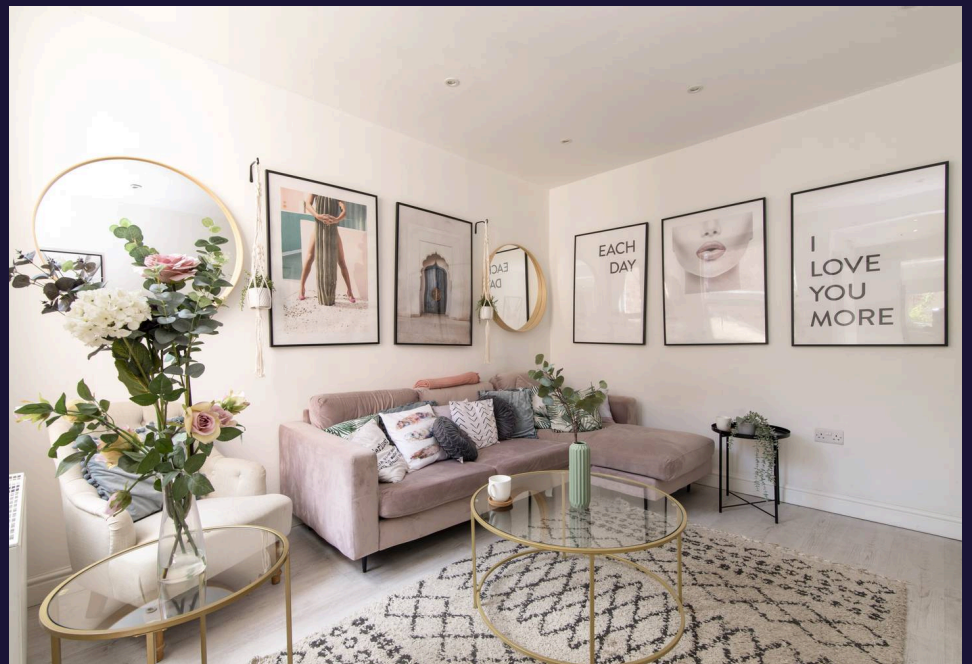


| Your Next Student Home for 2026/27 |
£137pppw | Bills Included option
available | 49 Week Contract | 360
Virtual Tour Available | 6 Double
Bedrooms | 2 Bathrooms |
Council Tax band: B

Tenure: Freehold

EPC Energy Efficiency Rating: C

EPC Environmental Impact Rating: D



- › Bills Included Option Available
- › 6 Double Bedrooms
- › 2 Bathrooms
- › TV Included in Bedrooms
- › Close to NTU
- › Close to City Centre
- › Great Transport Links
- › Close to Local Shops, Cafes and Bars

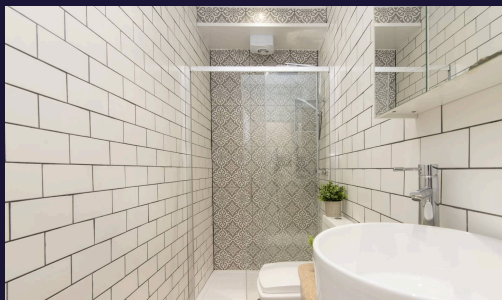


Council Tax band: B

Tenure: Freehold

EPC Energy Efficiency Rating: C

EPC Environmental Impact Rating: D

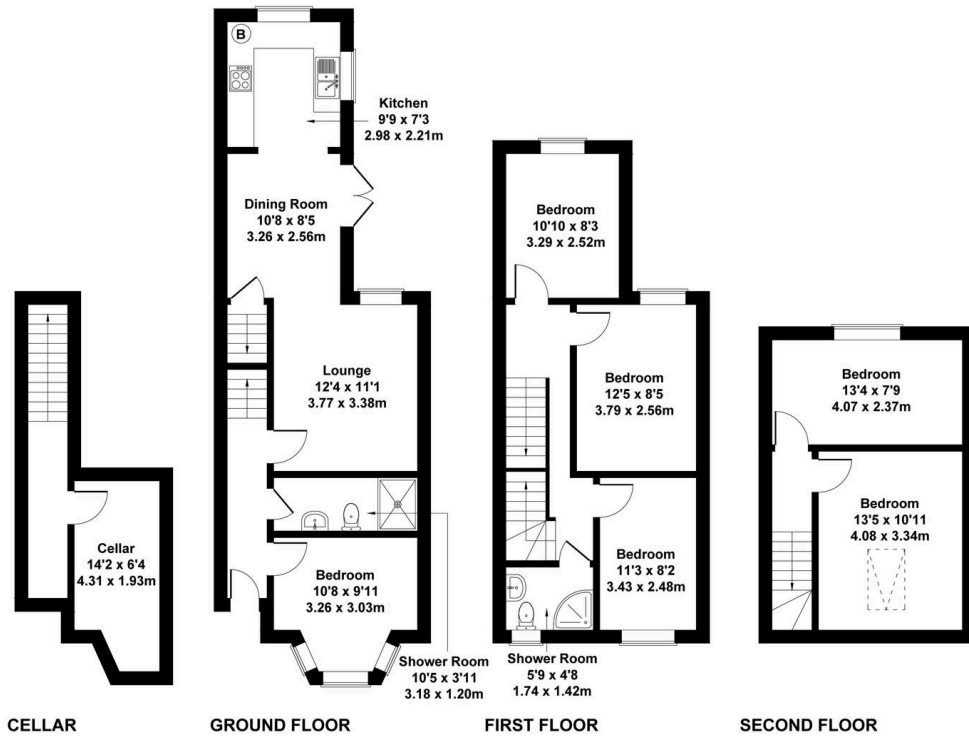




58 Teversal Avenue, Nottingham

58 Teversal Avenue NG7 1PX

Approximate Gross Internal Area
1421 sq ft - 132 sq m



Not to Scale. Produced by The Plan Portal 2023
For Illustrative Purposes Only.

You can include any text here. The text can be modified upon generating your brochure.



You can include any text here. The text can be modified upon generating your brochure.