



26 Stansfield Street, Todmorden

£175,000 Leasehold

Spacious three-bedroom terraced property set over three floors • Close proximity to Todmorden Town Centre • Access to transport links, essential amenities and local beauty spots • Modern kitchen and bathroom • Gas central heating + UPVC windows • Yard to the rear of the property • NO CHAIN



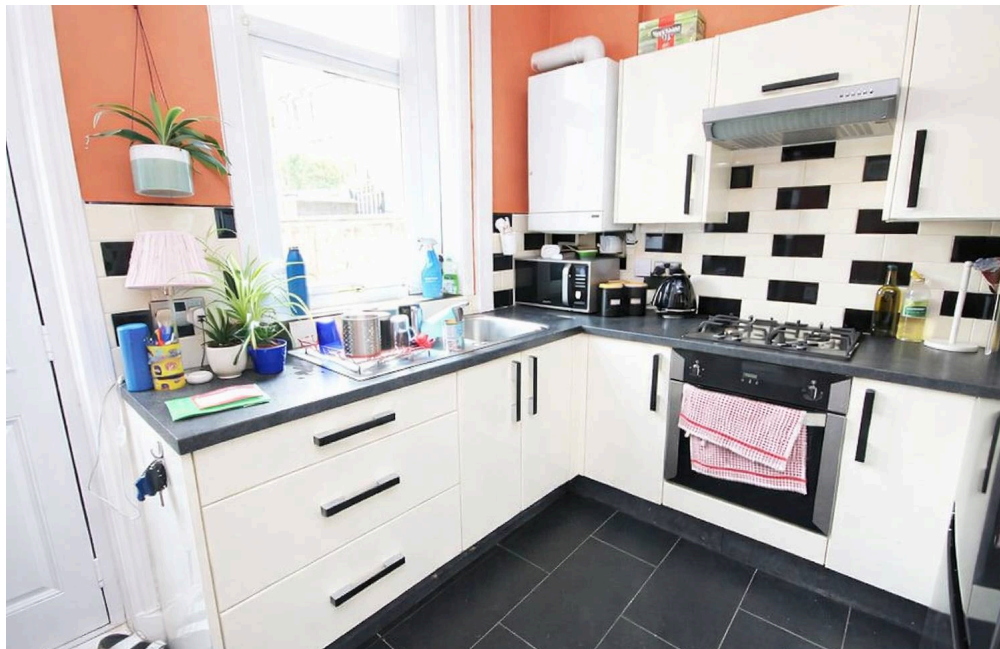
Spacious three-bedroom terraced house over three floors near Todmorden Town Centre. Modern kitchen and bathroom, private rear yard, gas central heating, no onward chain. Early viewing advised.

Council Tax band: A

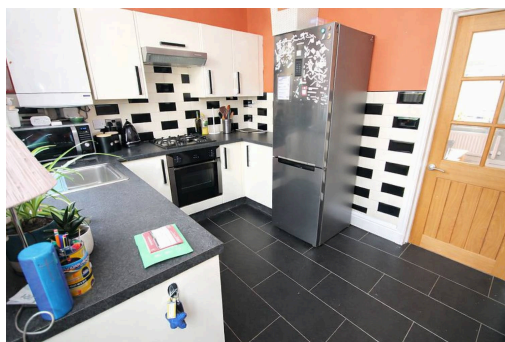
Tenure: Leasehold

EPC Energy Efficiency Rating: D

EPC Environmental Impact Rating:

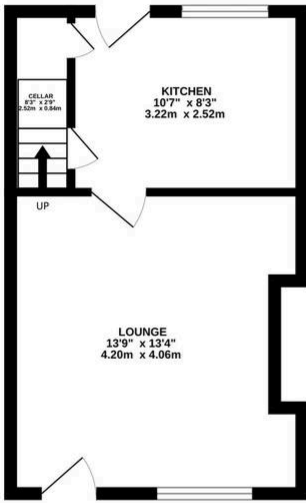


- Spacious three-bedroom terraced property set over three floors
- Close proximity to Todmorden Town Centre
- Access to transport links, essential amenities and local beauty spots
- Modern kitchen and bathroom
- Gas central heating + UPVC windows
- Yard to the rear of the property
- NO CHAIN





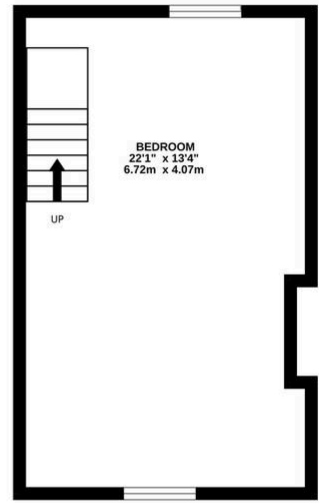
GROUND FLOOR
287 sq.ft. (26.6 sq.m.) approx.



1ST FLOOR
274 sq.ft. (25.5 sq.m.) approx.



2ND FLOOR
290 sq.ft. (26.9 sq.m.) approx.



TOTAL FLOOR AREA : 851 sq.ft. (79.1 sq.m.) approx.

Whilst every attempt has been made to ensure the accuracy of the floorplan contained here, measurements of doors, windows, rooms and any other items are approximate and no responsibility is taken for any error, omission or mis-statement. This plan is for illustrative purposes only and should be used as such by any prospective purchaser. The services, systems and appliances shown have not been tested and no guarantee as to their operability or efficiency can be given.
Made with Metropix ©2024

You can include any text here. The text can be modified upon generating your brochure.