



4 Fair Isle Place, Kilmarnock, KA3 2GE

Offers In Excess of £250,000

DONALD
ROSS
RESIDENTIAL



4 Fair Isle Place

Kilmarnock, KA3 2GE

Immaculate four bedroom detached villa in popular Southcraigs development of Kilmarnock with modern interiors, lounge with media wall, open plan dining kitchen, landscaped garden, driveway and integral garage.

Council Tax band: F

Tenure: Freehold

- Immaculate modern interiors throughout
- Spacious lounge with feature media wall
- Large open plan dining kitchen with utility room
- Convenient downstairs WC
- Four generously proportioned bedrooms
- Master bedroom with en-suite
- Professionally landscaped rear garden, perfect for relaxing or entertaining
- Driveway with integral garage





























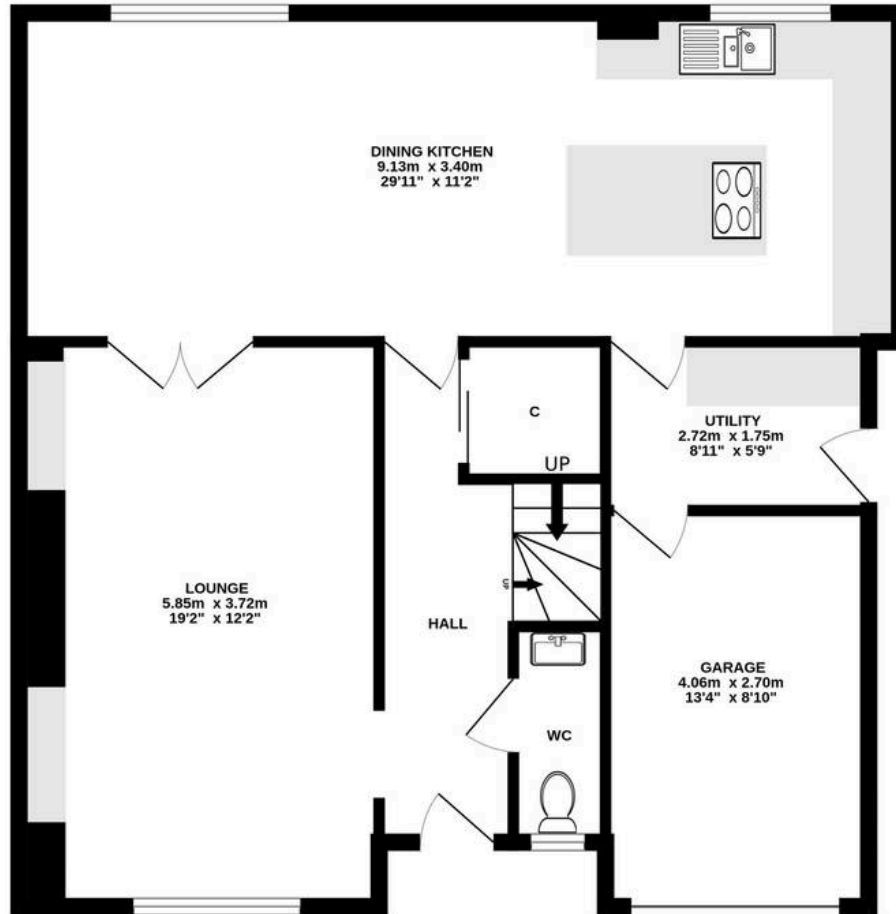




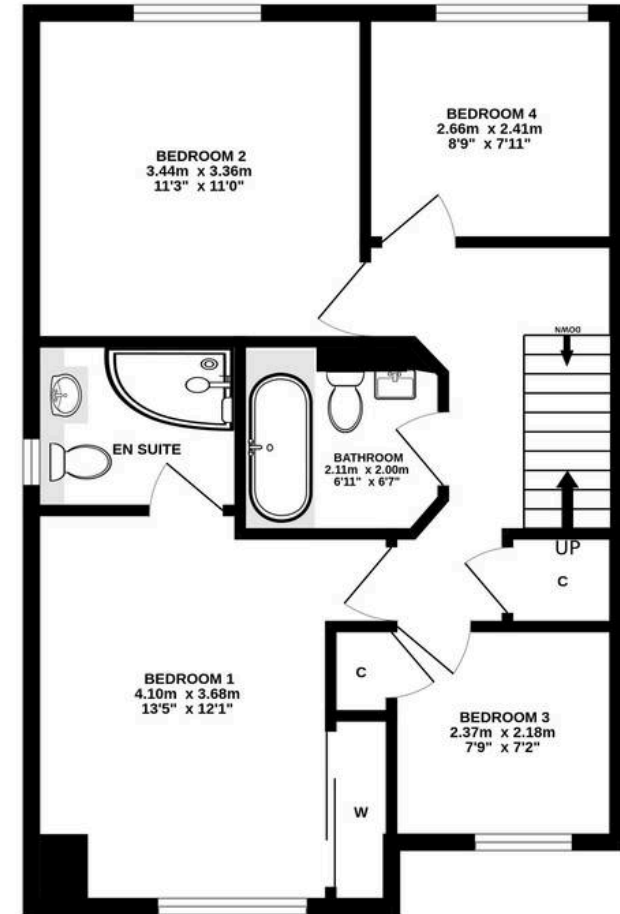




GROUND FLOOR



1ST FLOOR



ALL MEASUREMENTS TAKEN AT WID3ST POINT.

Whilst every attempt has been made to ensure the accuracy of the floorplan contained here, measurements of doors, windows, rooms and any other items are approximate and no responsibility is taken for any error, omission or mis-statement. This plan is for illustrative purposes only and should be used as such by any prospective purchaser. The services, systems and appliances shown have not been tested and no guarantee as to their operability or efficiency can be given.
Made with Metropix ©2026



Donald Ross Residential Kilmarnock

Donald Ross Residential, 104-106 John Finnie Street – KA1 1BB

01563 550088 • kilmarnock@donaldross.co.uk • www.donaldross.co.uk

While every effort has been made to ensure accuracy, buyers should independently verify all details and review the Home Report before submitting an offer. No warranty or representation is given regarding the property, and neither the agent nor the seller accepts responsibility for any inaccuracies. Buyers must satisfy themselves on all legal aspects.