



Flat 2, Eaton Lodge, 1 Cromwell Road
£220,000

**MANSELL
McTAGGART**
Trusted since 1947

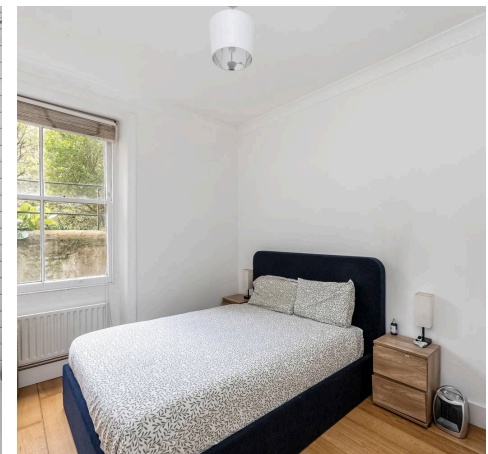
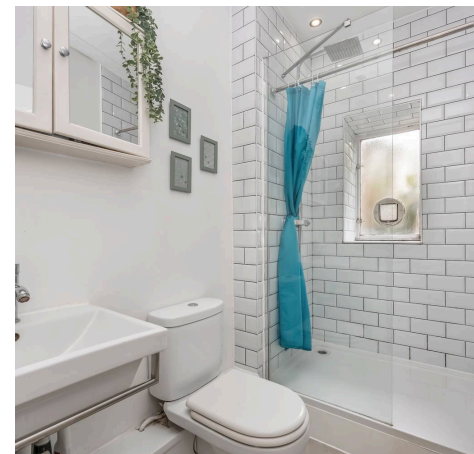
Flat 2

Eaton Lodge, Hove

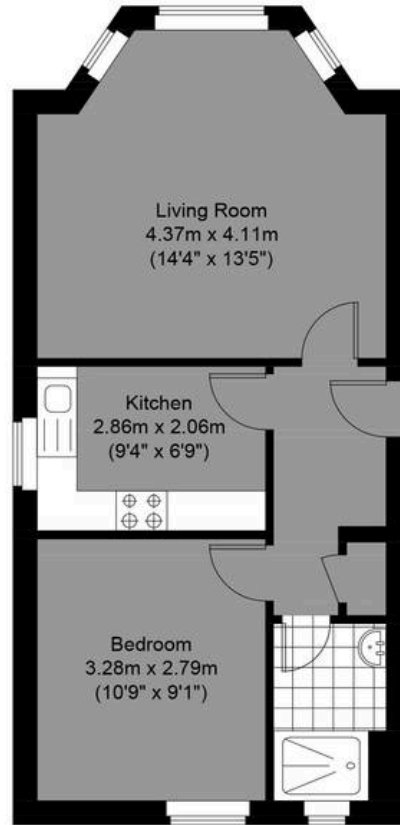
Council Tax band: TBD

Tenure: Share of Freehold

- 1 Bedroom Apartment In Central Hove
- Sold With No Onwards Chain & Share Of Freehold
- Large Communal Rear Garden
- Recently Converted Bathroom
- Bright South Facing Lounge With Bay Window
- Wooden Floors Throughout
- Gas Central Heating



Approximate Gross Internal Area = 40.35 sq m / 434.32 sq ft



**MANSELL
McTAGGART**
— Trusted since 1947 —

Cromwell Road

Lower Ground Floor
Approximate Floor Area
434.32 sq ft
(40.35 sq m)



Illustration for identification purposes only, measurements are approximate, not to scale.
© Mansell McTaggart



Mansell McTaggart Hove

170 Church Road, Hove - BN3 2DJ

01273 044929

hove@mansellmctaggart.co.uk

www.mansellmctaggart.co.uk/branch/hove/

