

PS

Vista Mare, 30 Chaddesley Glen, Sandbanks BH13 7PF

£6,500 PCM



Vista Mare, 30 Chaddesley Glen

Sandbanks, Poole

Vista Mare is a stunning architect-designed detached residence in a quiet, prestigious corner of Sandbanks. Positioned securely behind electric gates and arranged over four floors, this exceptional home offers spacious, high-specification accommodation ideal for modern family living or professional households.

Situated in the heart of Sandbanks, the property is within easy walking distance of Blue Flag beaches, harbourside walks, local cafes and renowned restaurants. The area is well connected with excellent transport links to Bournemouth, Poole, and London, making it both a peaceful retreat and a practical base.

- Five-Bedroom High-specification Modern Home
- Private Roof Terrace with Panoramic Harbour outlook
- Landscaped Outdoor Entertaining Areas
- Secure Gated Entrance and Off-Street Parking
- Just moments from Sandbanks Beach, Poole Harbour and the chain ferry to Studland
- Flexible on Furnishing Level
- Pets Considered
- Available from 01/09/2025



The first floor is dedicated to an impressive open-plan living, kitchen and dining area—flooded with natural light and designed for comfortable everyday life and entertaining. The lounge features large bifold doors opening onto a generous sun terrace. At the same time, the contemporary kitchen is fully equipped with built-in appliances and a sociable island unit with breakfast seating. At the rear, another set of bifold doors leads to a beautifully landscaped outdoor dining area with a built-in BBQ and seating for ten. Steps from this space ascend to the showstopping rooftop garden.

The private roof terrace boasts panoramic views across Poole Harbour to Brownsea Island and Sandbanks. With a corner sofa and sun loungers, it offers a rare and peaceful outdoor retreat—perfect for enjoying sunset views or hosting guests.

The property is entered via a spacious hallway that sets the tone for the rest of the home. On this level, there is a convenient cloakroom with a basin and W/C, as well as a separate utility room equipped with a washing machine and tumble dryer. Bedroom 4 is a generously sized super king room with patio doors opening out to the rear courtyard. It benefits from a luxurious en-suite shower room featuring twin sinks and a large shower. Bedroom 5 offers flexibility with either a super king or twin setup (by arrangement) and also enjoys access to a private courtyard area.

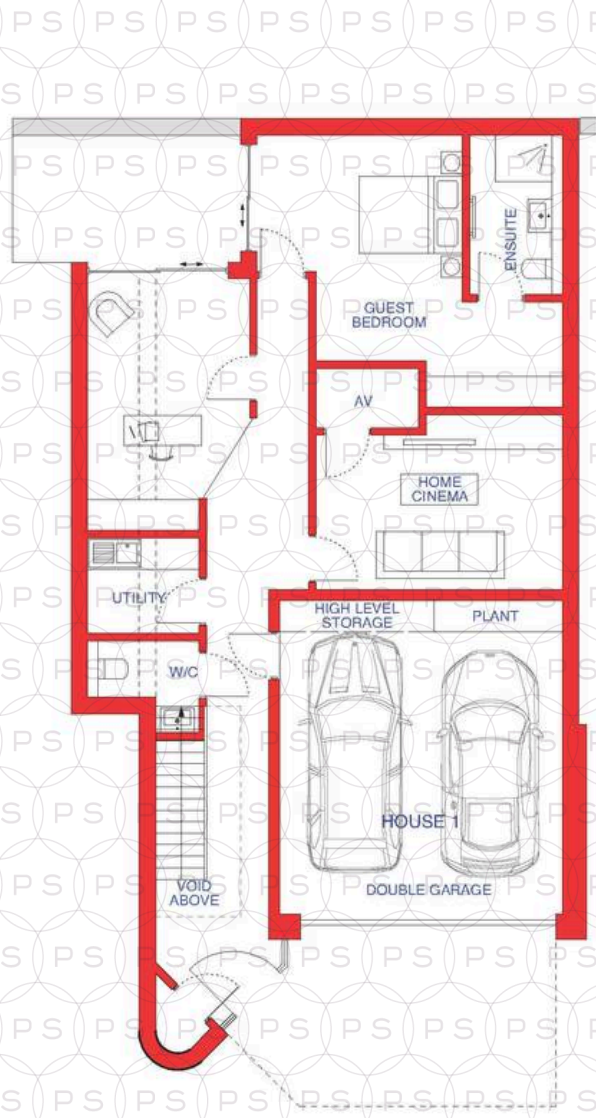


The first floor is dedicated to a striking open-plan living space, ideal for everyday living and entertaining. The lounge area is fitted with comfortable seating, a large TV, and a gas feature fireplace, with bifold doors opening out onto a front-facing sun terrace furnished with loungers. The adjoining kitchen is both stylish and functional, with high-quality integrated appliances and a sociable island unit. Adjacent to the kitchen, the dining area seats six and leads directly to the rear outdoor dining space, complete with a BBQ and seating for ten. From here, steps lead up to the impressive roof terrace. A second cloakroom with a basin and W/C completes this floor.

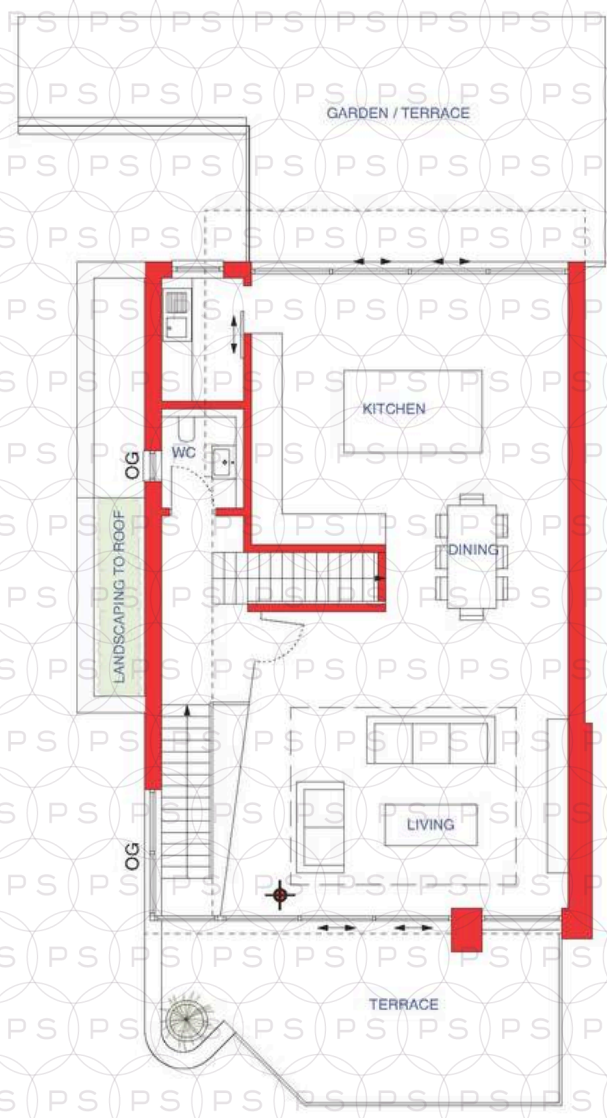
The principal bedroom suite occupies a premium position on the second floor and features a super king bed, floor-to-ceiling windows, and a Juliette balcony with spectacular harbour views. This suite also includes a dressing area and a spacious en-suite bathroom with a bath, a shower cubicle, and twin sinks. Bedroom 2 is a double room with a Juliette balcony and its own ensuite shower room, while Bedroom 3 also offers a double bed, Juliette balcony, and private ensuite with shower, basin and W/C.

With five generously proportioned bedrooms (four with en-suites), high-quality finishes throughout, and a range of exceptional outdoor areas, Vista Mare provides a rare opportunity for long-term residency in one of the most desirable coastal locations in the UK.

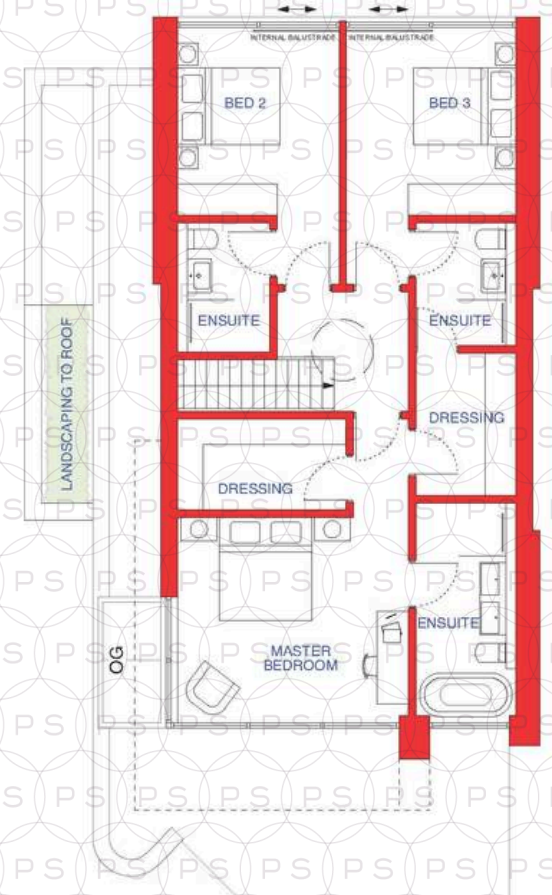




Ground Floor



First Floor



Second Floor



OG Opaque Glazing

AREA SCHEDULE:

Floor:	Area
Ground Floor:	1001sqft
First Floor:	1032sqft
Second Floor:	962sqft
TOTAL (without garage)	2995sqft



Philippa Sole Ltd

Philippa Sole, 3A Springfield Road, Ashley Cross - BH14 0LG

01202 747999 • lettings@philippasole.co.uk • www.philippasole.co.uk

All statements in these particulars are provided without responsibility on the part of Philippa Sole Ltd or the vendor. Neither Philippa Sole Ltd nor any individual employed by or acting on its behalf is authorised to make any representation or warranty regarding this property. Room measurements are approximate, and no detailed surveys, service inspections, or fittings tests have been conducted.