



Victoria Mews, Victoria Close, Rickmansworth, WD3

£950,000 Freehold

NEW DEVELOPMENT OF FOUR 4-BEDROOM HOMES MINUTES FROM RICKMANSWORTH TOWN CENTRE BY BUGLER HOMES • FULLY FITTED OAKWOOD KITCHENS WITH BOSCH APPLIANCES • AIR CONDITIONING TO BEDROOM ONE ON SECOND FLOOR • AMTICO SPACIA FLOORING TO KITCHEN, DINING ROOM & HALLWAY • CORMAR CARPETS FITTED TO STAIRWELL & ALL BEDROOMS • BATHROOM & EN-SUITE SANITARYWARE BY ESTEEM • EV CHARGING POINT, LOW-ENERGY LED LIGHTING & AIR SOURCED HEAT PUMP • 2 OFF-STREET PARKING SPACES • PRIVATE LANDSCAPED GARDEN

TREND & THOMAS
ESTATE AGENTS SURVEYORS & VALUERS



Introducing an exceptional opportunity to reside in one of four exclusive 4-bedroom residences situated just moments away from Rickmansworth Town Centre and Train Station.

Meticulously crafted by Bugler Homes, a distinguished, family-owned construction and property enterprise deeply rooted in Rickmansworth, these homes epitomise a rare blend of historical elegance and modern country living.

Upon entry, Cormar carpets grace the stairwell and all bedrooms, while Amtico flooring adorns the kitchen, dining area, and hallway. The embrace of underfloor heating throughout the ground and first floors ensures cosy comfort in every corner. The kitchen, the heart of the home, features fully-fitted Oakwood kitchens with Bosch appliances, including a built-in combi microwave and induction hob, Quartz stone worktops, and a Caple wine cooler, beckoning culinary enthusiasts and entertainers alike.

Bedrooms one and two boast fully-fitted wardrobes, while Esteem bathrooms exude luxury with a bath adorned with a stylish feature panel and concealed wall-mounted W.C. and basin.

Elevating comfort and convenience, each residence offers two coveted off-street parking spaces and exterior features such as resin-bound gravel driveway, an outdoor tap, and electrical socket. An inherent commitment to sustainable living shines through with amenities like 1 EV charger point, low-energy LED lighting, and an Air Sourced Heat Pump. The sanctuary of a private, landscaped garden with a thoughtfully designed patio beckons relaxation and outdoor enjoyment.

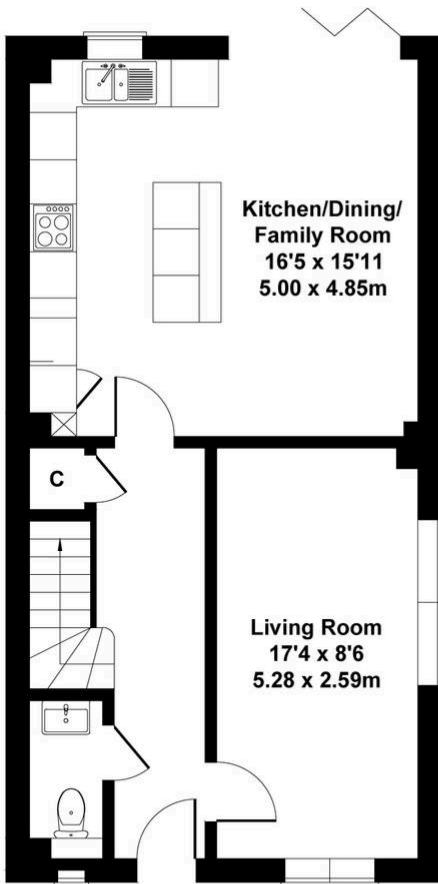
Impeccably curated by Micasa, a renowned multi award-winning interior designer based in London, and enhanced by the exquisite touch of Rosemary Coldstream, a distinguished garden designer with more than two decades of experience and accolades including a gold medal at the RHS Chelsea Flower Show, these homes promise a lifestyle of unrivalled refinement.

Seize the opportunity to secure your place within this prestigious development, act swiftly to claim your piece of refined living at its finest.

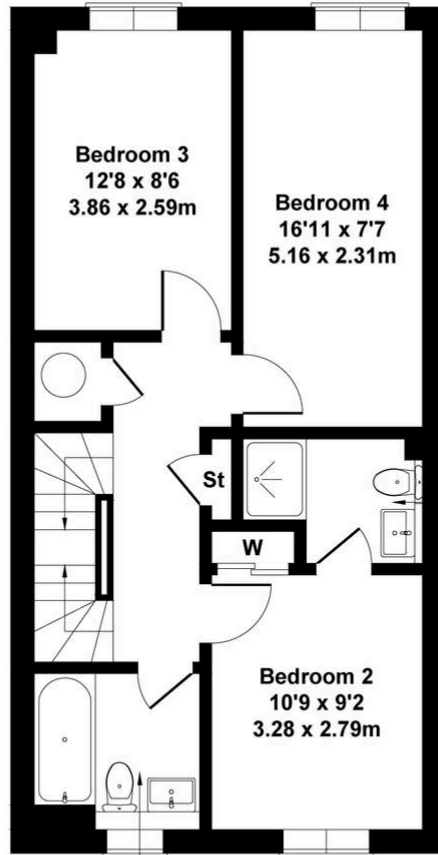
Council Tax band: TBD



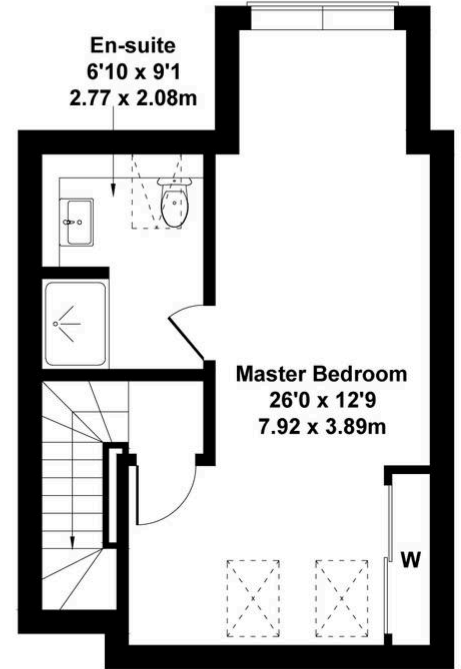




GROUND FLOOR



FIRST FLOOR



SECOND FLOOR

Not to Scale. Produced by The Plan Portal 2024
For Illustrative Purposes Only.



Whilst these particulars are intended to give a fair description of the property, their accuracy is not guaranteed. Any purchaser must satisfy themselves as to the correctness of statements contained therein. These particulars do not constitute an offer or contract, and statements therein are made without responsibility, or warranty on the part of the vendor or Trend & Thomas, neither of whom are liable to expenses incurred should the property no longer be available.

It is not always possible on viewings to confirm the working order of the central heating or appliances included within the sale; therefore, we strongly recommend that prospective buyers satisfy themselves upon these matters before embarking upon the expense of purchase.

These particulars do not confirm that any fixtures and fittings mentioned are included within a purchase, unless otherwise stated, to include but not limited to carpets, curtains, furnishings, fittings, electrical goods, gas fires, light fittings etc.