



Flat 14, The Priory Syresham Gardens, Haywards Heath

In Excess of £260,000

Flat 14

The Priory Syresham Gardens, Haywards Heath

Henry Adams are delighted to present to the market this spacious and modern two double bedroom apartment, situated in the heart of Haywards Heath town centre. The Grade II listed building was built in 1896 was converted into luxury apartments in 2020, to create modern living in this historic building, ideal for first time buyers and commuters.

Internally, the property offers a welcoming entrance hall with built in storage space, which leads through to the open plan living space. The accommodation is carefully divided into a spacious dining space as well as a good sized lounge area, ideal for hosting and entertaining. There is also a well equipped kitchen, offering ample work top and storage space, with a range of integrated modern appliances and white goods.

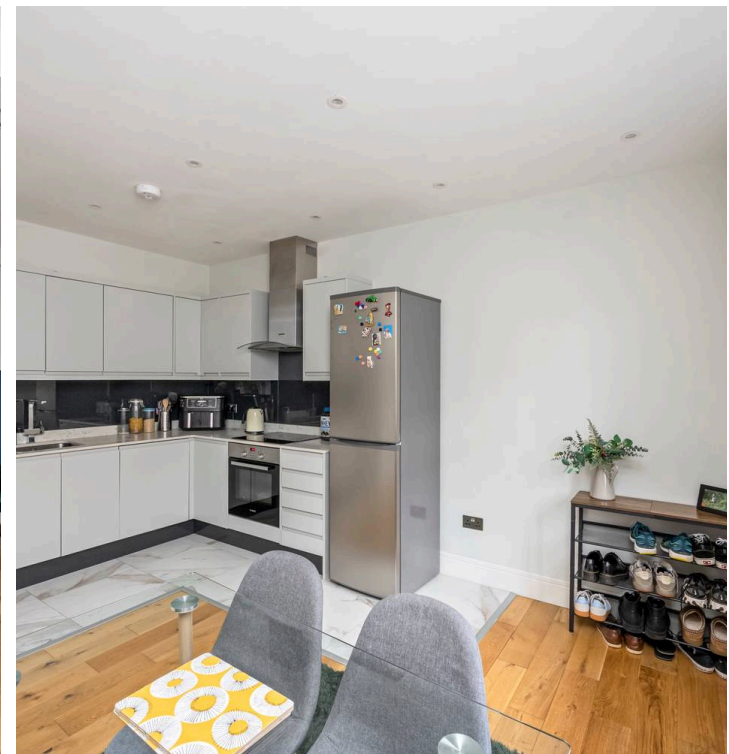
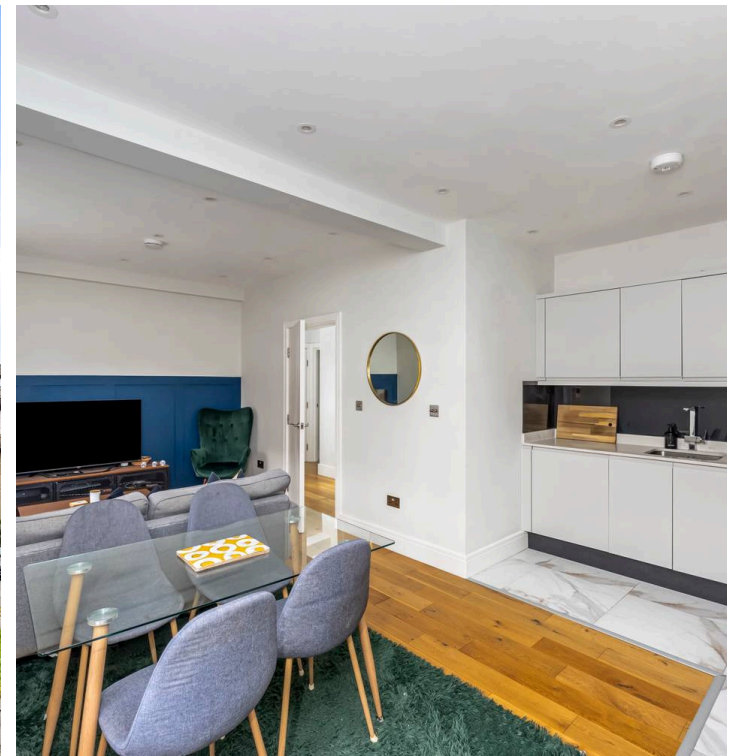
In addition to this, there are two great size double bedrooms, with idyllic views over the Historic Priory. There is also a stunning family bathroom with both bath and shower facilities. The bathroom is presented to an incredibly high standard.

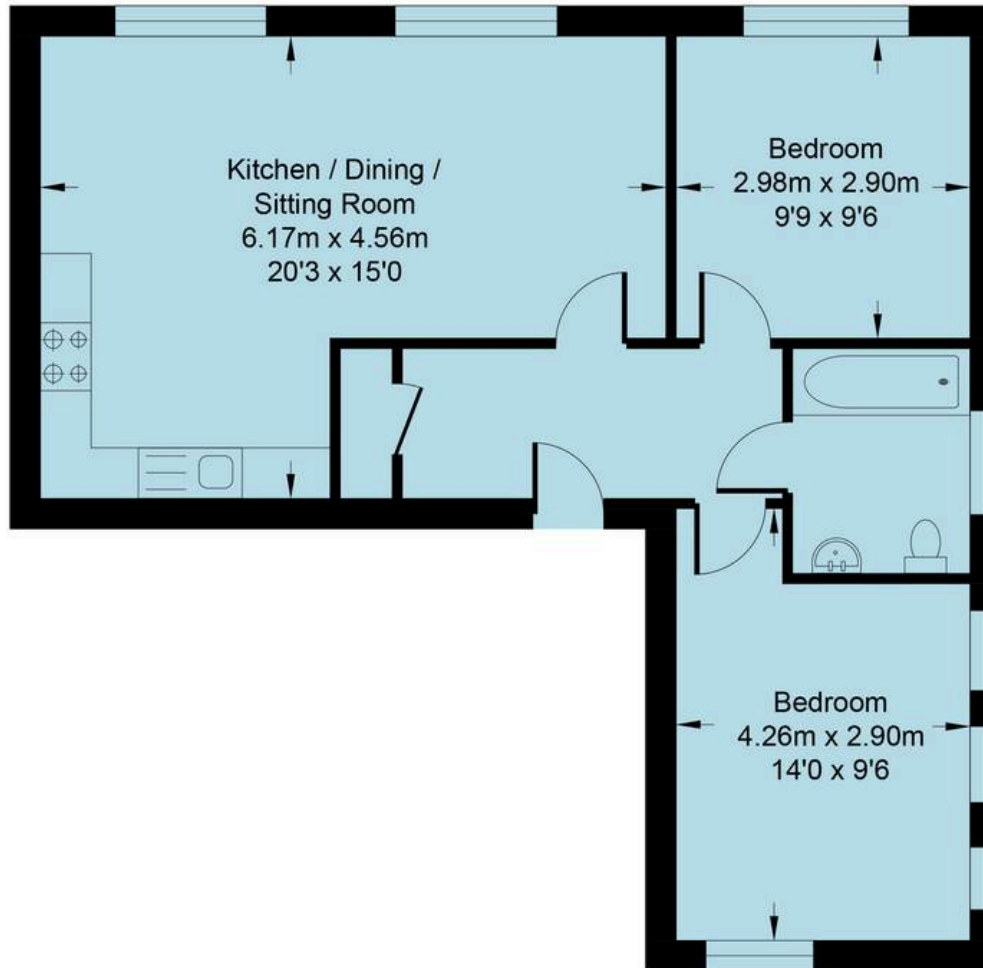
The block itself has secure telephone entry system, with a communal courtyard garden, and communal parking close by.

Situated in the heart of Haywards Heath, the property is ideally situated with access to the High Street and a range of local shops, cafes & supermarkets. There is also a range of transport links within easy reach including both the A23/M23 & Haywards Heath Town Centre.

Council Tax band: B

Tenure: Leasehold





FIRST FLOOR

Syresham Garden, The Priory

Approximate Area = 707 sq ft / 65.7 sq m

Total = 707 sq ft / 65.7 sq m

For identification only - not to scale



Henry Adams - Haywards Heath

Henry Adams HRR Ltd, 1 Park Parade,, Haywards Heath - RH16 4LX

01444 458380

haywardsheath@henryadams.co.uk

www.henryadams.co.uk/

Agents Note - Our particulars are for guidance only and are intended to give a fair overall summary of the property. They do not form part of any contract or offer, and should not be relied upon as a statement or representation of fact. Measurements, areas and distances are approximate only. Photographs may include lifestyle shots and pictures of local views. No undertaking is given as to the structural condition of the property, or any necessary consents or the operating ability or efficiency of any service, system or appliance. Please ask if you would like further information, especially before you travel to the property.