


HOME  TRUTHS

51 Kimberley Street, Coppull

Chorley

 £795 pcm



51 Kimberley Street

Coppull, Chorley

This spacious two-bedroom property is ideally located close to local amenities and transport links, making it perfect for a professional couple or small family.

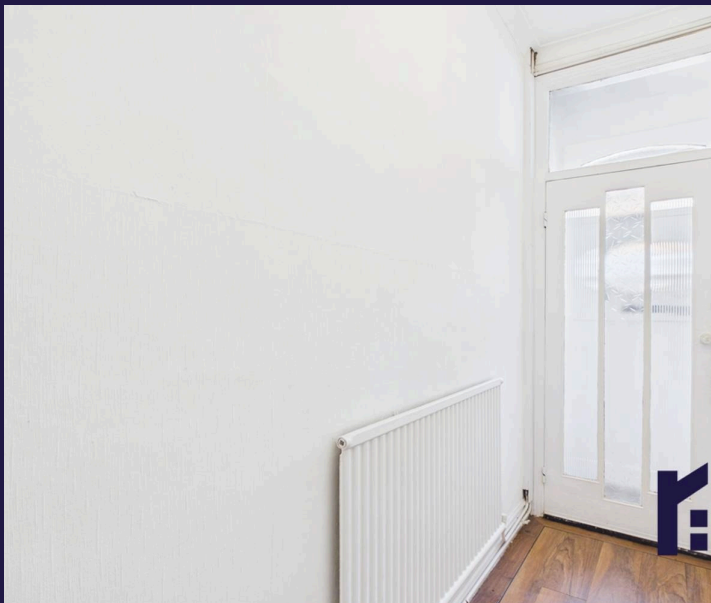
The ground floor comprises a bright and generously sized living room with an attractive bay window, creating a light and welcoming space. To the rear is a second reception room, ideal for use as a dining area or additional living space.

Leading off the dining room is a kitchen extension fitted with a range of wall and base units, along with space for a fridge freezer and an electric oven and hob.

Upstairs, the property offers two well-proportioned bedrooms, both neatly decorated and offering ample space for bedroom furniture. The bathroom, fitted in recent years, includes a WC, wash basin, and a panelled bath with shower over.

Externally, the property benefits from a small front garden and a low-maintenance rear yard with access for bins. On-street parking is available to the front.

The property is available immediately and requires a deposit £917, including a holding deposit of £180. A Zero Deposit Scheme is also available.



51 Kimberley Street

Coppull, Chorley

Well presented bay fronted mid terrace with two bedrooms and new bathroom available to let now.
Council Tax band: A

EPC Energy Efficiency Rating: D

EPC Environmental Impact Rating:

- Enclosed yard to rear
- Zero Deposit Scheme available
- Available now
- Two well-proportioned bedrooms
- Two reception rooms
- Close to local amenities and transport links



HOME  TRUTHS

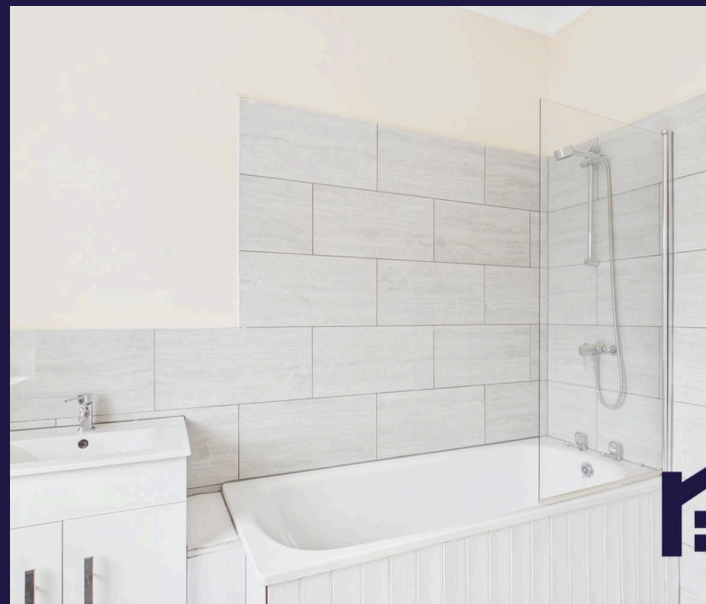
Eccleston Branch

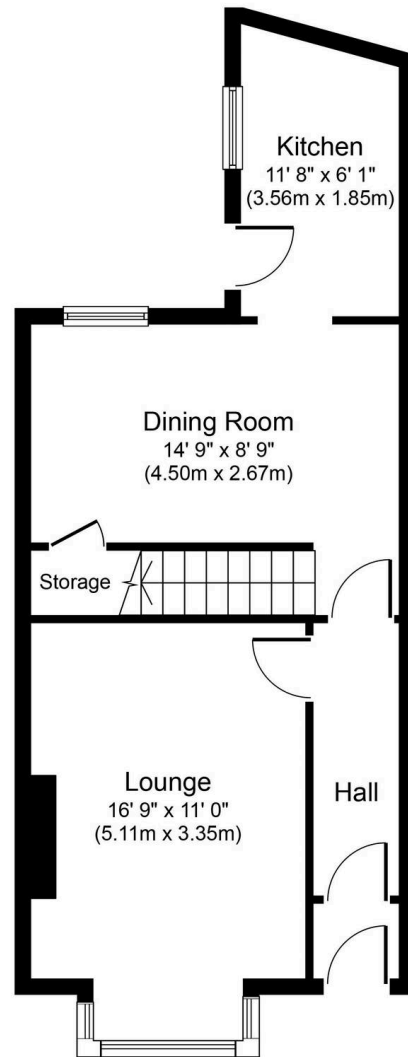
265 The Green, Eccleston, PR7 5TF
01257 451673

Coppull Branch

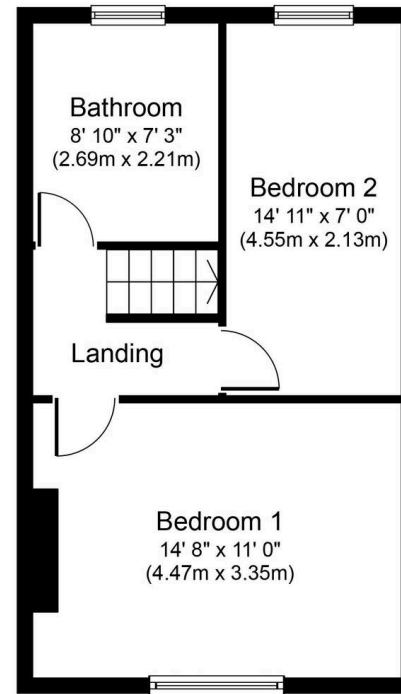
244 Spendmore Lane, Coppull, PR7 5DE
01257 794588

www.hometruthslancs.co.uk
office@hometruthslancs.co.uk





Ground Floor
Approximate Floor Area
473 sq. ft.
(43.9 sq. m.)



First Floor
Approximate Floor Area
388 sq. ft.
(36.0 sq. m.)

Whilst every attempt has been made to ensure the accuracy of the floor plan contained here, measurements of doors, windows, rooms and any other items are approximate and no responsibility is taken for any error, omission, or mis-statement. This plan is for illustrative purposes only and should be used as such by any prospective purchaser or tenant. The services, systems and appliances shown have not been tested and no guarantee as to their operability or efficiency can be given.