



24 Birchwood Drive, Coppull

Chorley





24 Birchwood Drive

Coppull, Chorley

VIEWINGS FULLY BOOKED Two bedroom semi-detached property close to all village amenities and excellent schools. This spacious and well-presented property is ready to move in to and available immediately.

The accommodation comprises porch area into the entrance hallway with stairs to upper floor and lounge with large picture window letting in plenty of natural light. The large kitchen diner, accessible from the end of the hallway has a range of wall and base units with freestanding electric cooker and space and plumbing for other appliances.

To the first floor are two double bedrooms, one carpeted and one laminate flooring. The family bathroom comprises of panelled bath with shower over, wash hand basin, low level wc and a heated towel rail.

Externally to the front is a driveway for at least two cars and side access to the rear garden. The rear has a patio and lawn area with shed space and a decking area to enjoy the sunshine.



24 Birchwood Drive

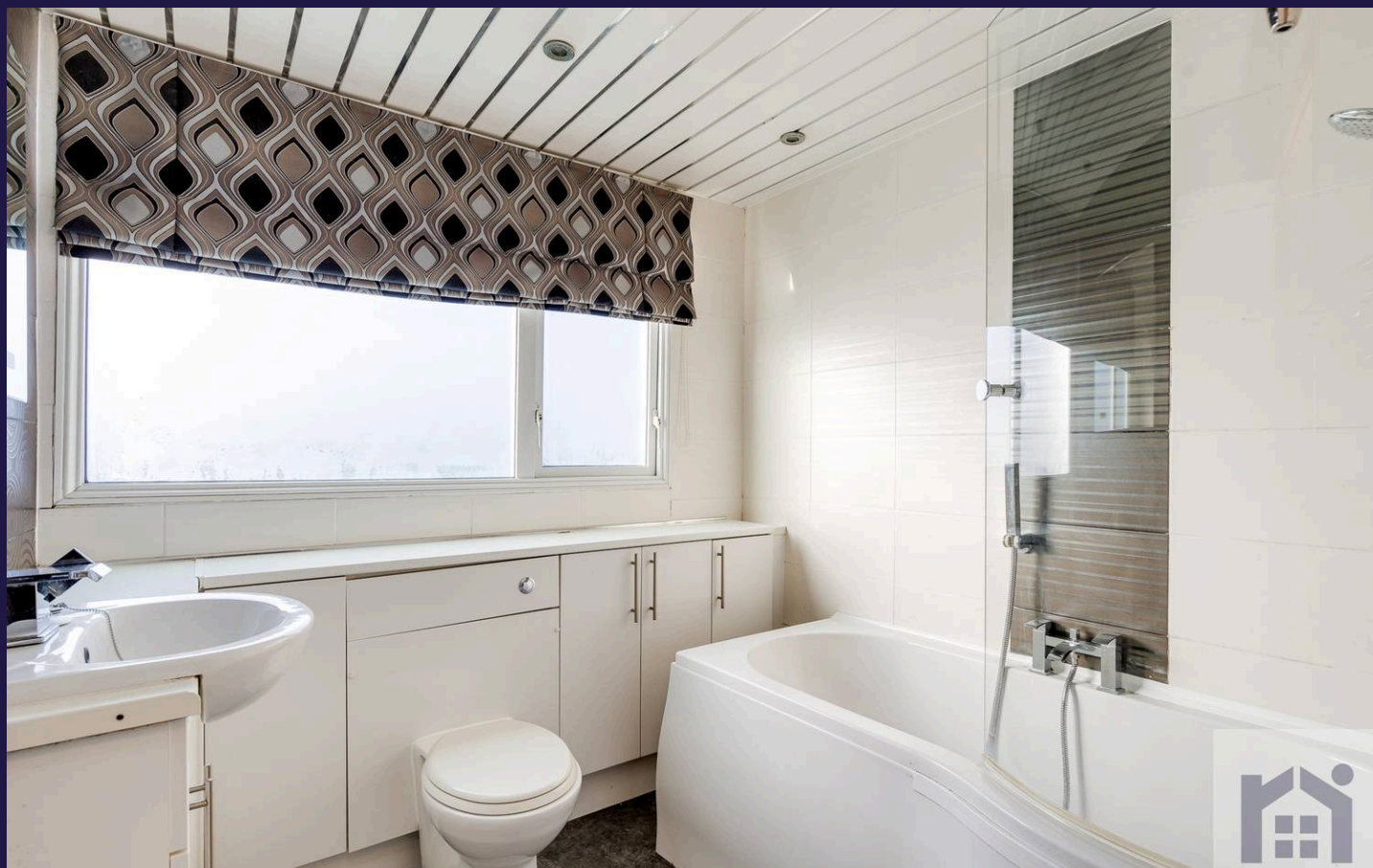
Coppull, Chorley

VIEWINGS FULLY BOOKED Two bedroom semi-detached property close to all village amenities and excellent schools. This spacious and well-presented prop...

Council Tax band: TBD

EPC Energy Efficiency Rating: D

EPC Environmental Impact Rating: D



HOME  TRUTHS

Eccleston Branch
265 The Green, Eccleston, PR7 5TF
01257 451673

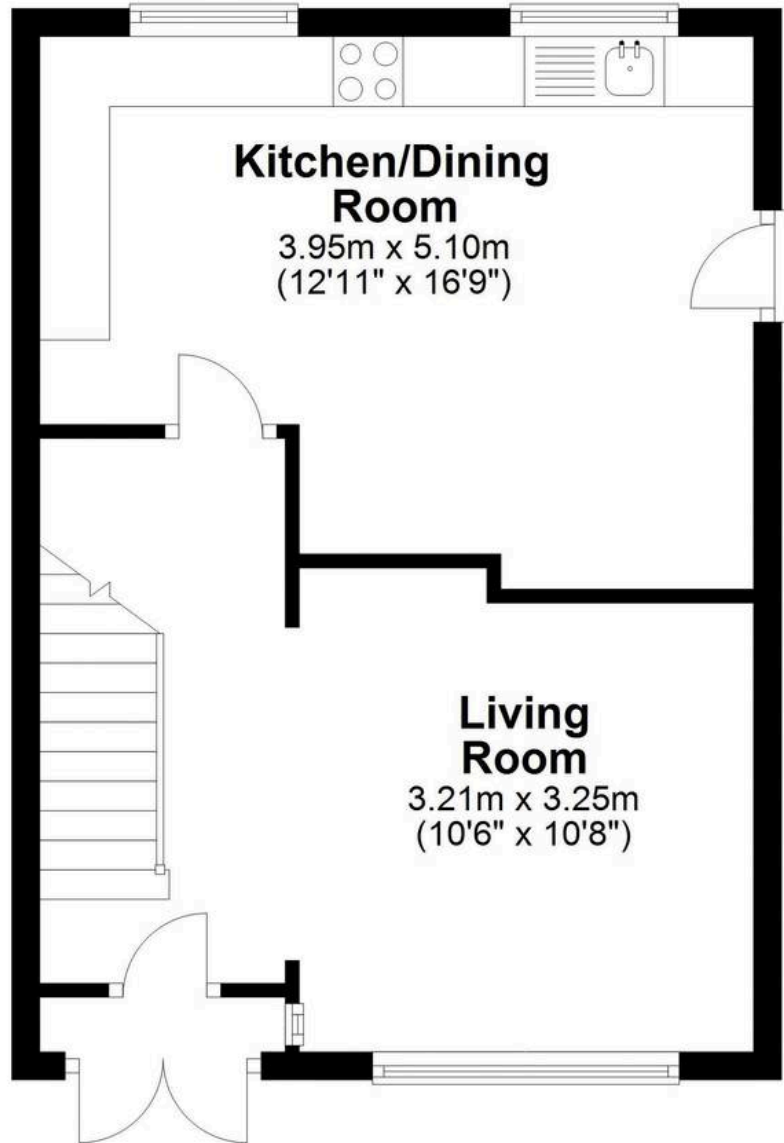
Coppull Branch
244 Spendmore Lane, Coppull, PR7 5DE
01257 794588

www.hometruthslancs.co.uk
office@hometruthslancs.co.uk



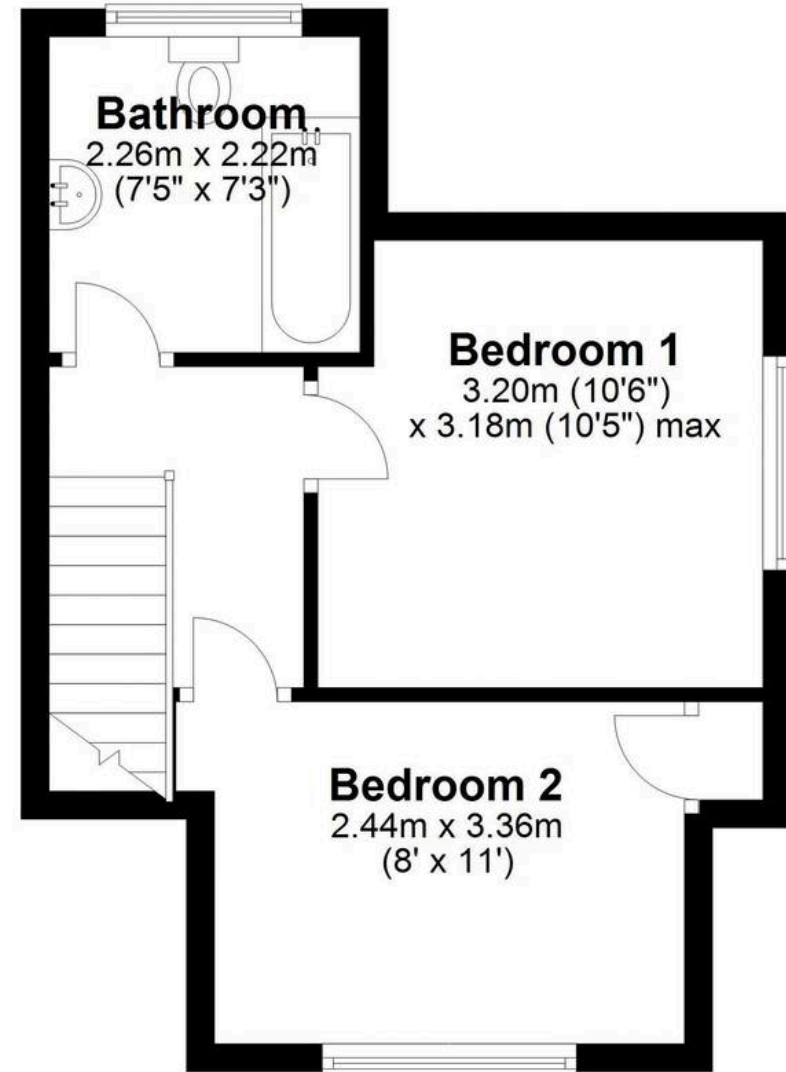
Ground Floor

Approx. 37.0 sq. metres (398.4 sq. feet)



First Floor

Approx. 29.4 sq. metres (316.5 sq. feet)



Total area: approx. 66.4 sq. metres (714.9 sq. feet)

THIS FLOOR PLAN IS FOR ILLUSTRATION ONLY AND IS NOT A SCALE DRAWING

Plan produced using PlanUp.