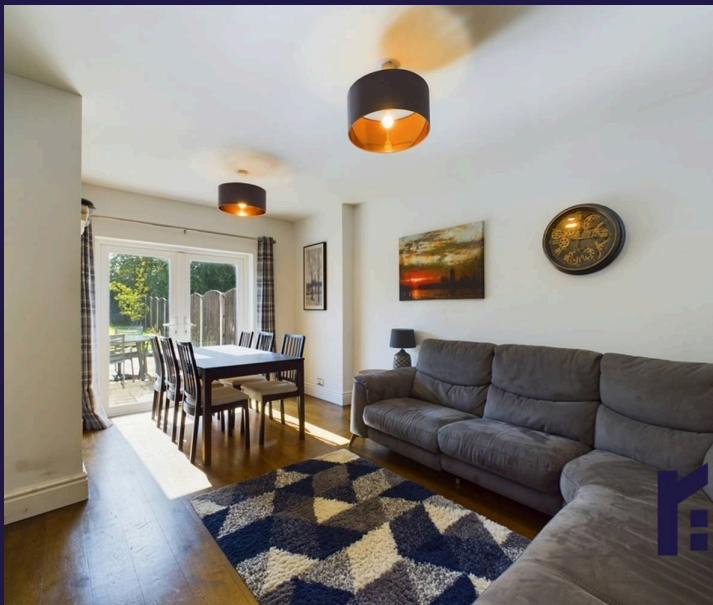


Sagar Street, Ecclestone

PR7 5TA





Delightful and spacious semi detached property in the heart of the village within easy reach of amenities, excellent schools and countryside walks. To the front, the driveway leads to secure parking to the rear and the main entrance. Step into the hallway and from there to the bay fronted first reception room with wood burning stove. To the rear, reception two is equally spacious and has patio doors opening to the south facing garden. The kitchen comprises a range of wall and base units with integrated appliances including gas hob, electric oven and grill, refrigerator, freezer, dishwasher and washing machine. Step outside into the fabulous south facing garden with large sun terrace, lawn and raised sunset terrace with bespoke firepit so that you can relax and entertain well into the evening. Back inside, stairs lead to the first floor landing with access to the loft. Bedroom one is a spacious double to the rear with bedroom two also a double to the front with built in storage. Bedroom three is a comfortable single and, completing the accommodation, the bathroom comprises bath with screen and electric shower over, wash hand basin, wc and ladder heated towel rail.

Delightful and spacious semi detached property in the heart of the village within easy reach of amenities, excellent schools & country walks. The south facing garden has large sun terrace, lawn and raised sunset terrace with bespoke firepit so that you can relax and entertain well into the evening.

Council Tax band: B

Tenure: Leasehold

EPC Energy Efficiency Rating: C

EPC Environmental Impact Rating: D

- Lovely semi detached property
- South facing garden with sun terraces
- Modern kitchen and bathroom
- Close to amenities
- Virtual tour



HOME  TRUTHS

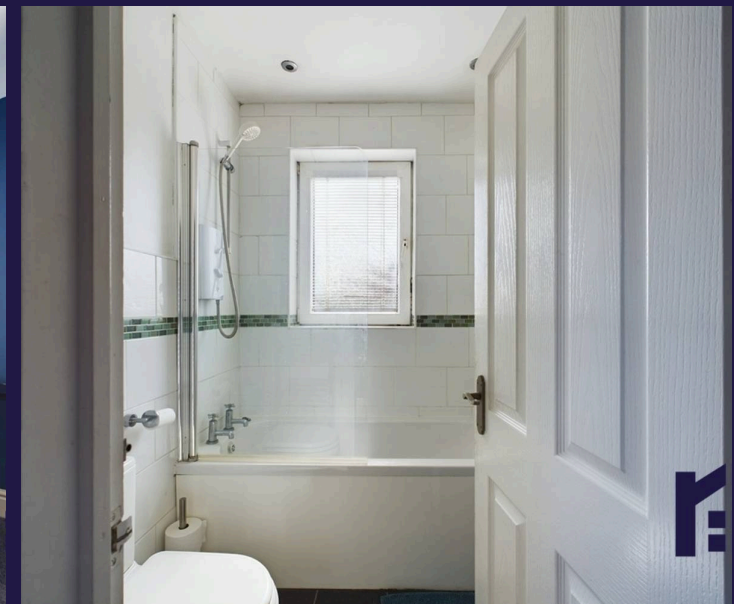
Eccleston Branch

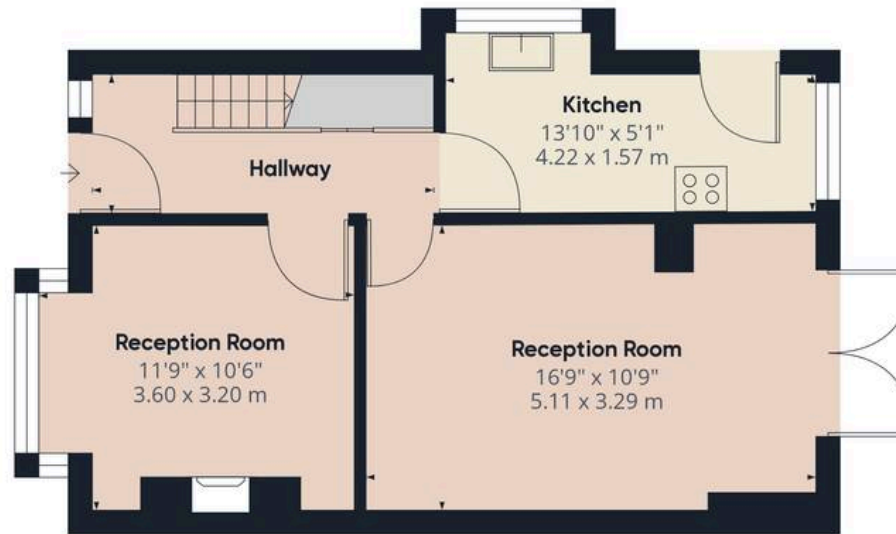
265 The Green, Eccleston, PR7 5TF
01257 451673

Coppull Branch

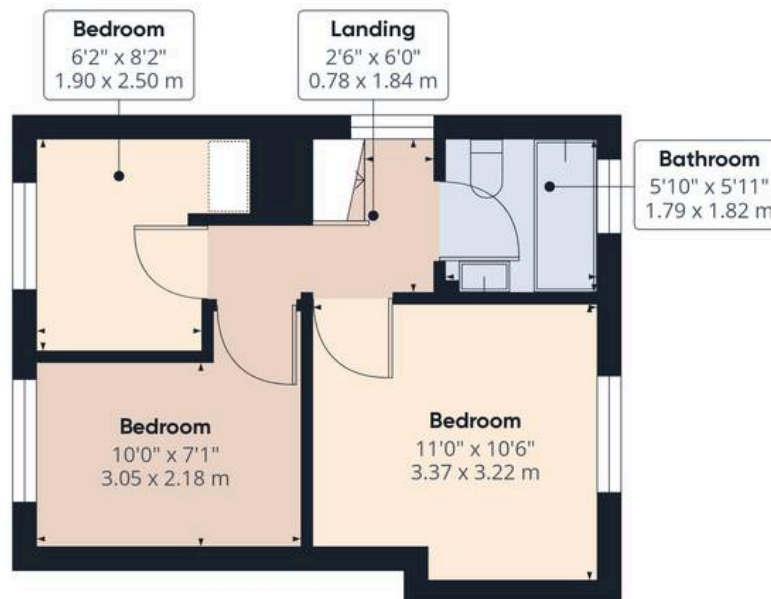
244 Spendmore Lane, Coppull, PR7 5DE
01257 794588

www.hometruthslancs.co.uk
office@hometruthslancs.co.uk





Floor 1



Floor 2

Approximate total area⁽¹⁾

764.78 ft²

71.05 m²

(1) Excluding balconies and terraces

While every attempt has been made to ensure accuracy, all measurements are approximate, not to scale. This floor plan is for illustrative purposes only.

Calculations are based on RICS IPMS 3C standard.

GIRAFFE 360