



The Thatched Cottage, Townsend, Haddenham - HP17 8JW

Guide Price £985,000

 **TIM RUSS**
& Company



The Thatched Cottage, Townsend

Haddenham, BUCKINGHAMSHIRE

- A BEAUTIFUL PERIOD HOME SET WITHIN MATURE GARDENS, WITH GARAGE, DETACHED STUDIO AND ADDITIONAL OUTBUILDING—OFFERING AN ATTRACTIVE COMBINATION OF CHARACTER, SPACE AND LIFESTYLE APPEAL.
- FOUR IMPRESSIVE RECEPTION ROOMS, A STUNNING VAULTED KITCHEN AND FOUR BEAUTIFULLY APPOINTED BEDROOMS
- METICULOUSLY MAINTAINED AND FINISHED TO AN EXCEPTIONALLY HIGH STANDARD
- A HIGHLY SOUGHT-AFTER VILLAGE SETTING WITH ATTRACTIVE VIEWS OVER TOWNSEND GREEN
- A CHARMING SETTING IN THE HEART OF THE OLD VILLAGE, JUST A SHORT WALK TO THE STATION FOR DIRECT LINKS TO LONDON
- STUNNING WALLED GARDENS OF EXCEPTIONAL BEAUTY AND PRIVACY
- SITUATED WITHIN A HIGHLY DESIRABLE CONSERVATION AREA



The Thatched Cottage, Townsend

Haddenham, BUCKINGHAMSHIRE

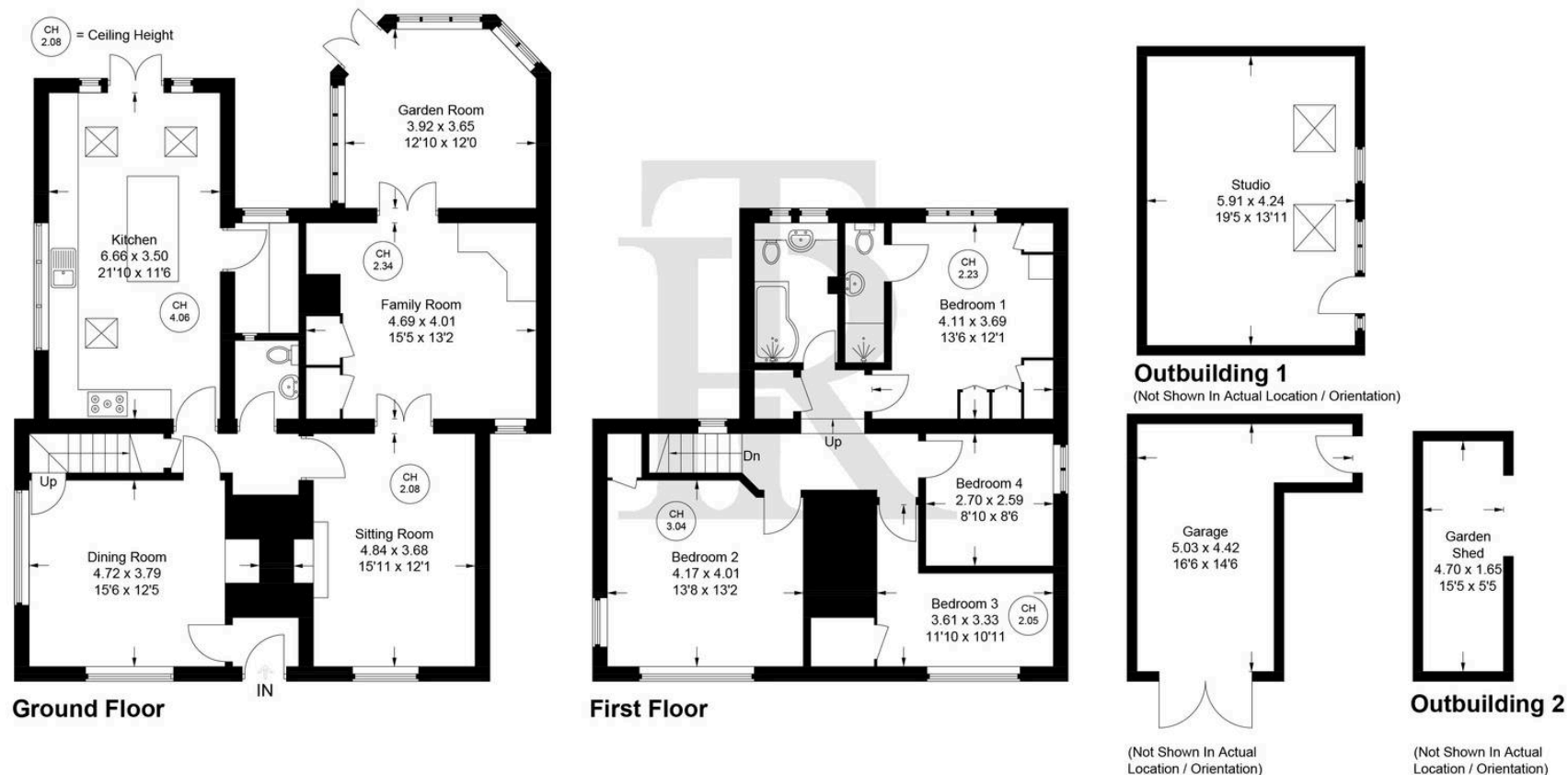
An exceptional Wychert part-thatched cottage, beautifully extended and stylishly refurbished to create a truly captivating family home, set within glorious mature gardens of approximately 0.25 acres. Occupying a prime position in this highly desirable conservation village, the property enjoys delightful views over Townsend Green and is just a short stroll from Haddenham & Thame Parkway Station.

Rich in character yet effortlessly elegant, the interior offers an array of impressive reception spaces, including a welcoming living room with gas stove and a striking dining room centred around a magnificent inglenook fireplace and restored parquet flooring. A generous family room and a light-filled garden room open seamlessly onto the terrace, perfect for modern living and entertaining. At the heart of the home lies a breathtaking vaulted kitchen, thoughtfully reimagined with bespoke Shaker-style cabinetry, a central island, integrated appliances and a separate utility.

Upstairs, four beautifully presented bedrooms include a refined principal suite with contemporary shower room, complemented by a stylishly updated family bathroom. The home is rich in period detail, with exposed beams, latched doors and exquisite limed plasterwork, all carefully preserved and enhanced.

Set behind a private driveway with ample parking and a charming detached thatched garage, the gardens are a standout feature—expansive lawns, a split-level terrace, vibrant herbaceous borders and an ornamental pond create a picturesque setting. A detached studio adds further versatility, completing this outstanding village home.





The Thatched Cottage, 13 Townend, HP17 8JW

Approximate Gross Internal Area = 183.9 sq m / 1980 sq ft

Garage = 16.1 sq m / 174 sq ft

Outbuildings = 32.7 sq m / 353 sq ft

Total = 232.7 sq m / 2507 sq ft

Floor Plan produced for Tim Russ & Company by Media Arcade Ltd ©.

Illustration for identification purposes only. Window and door openings are approximate. Whilst every attempt is made to assure accuracy in the preparation of this plan, please check all dimensions, shapes and compass bearings before making any decisions reliant upon them.



Tim Russ and Company

Tim Russ & Co, 112 High Street - OX9 3DZ

01844 217722 • thame@timruss.co.uk • timruss.co.uk/

By law we must verify every seller and buyer for anti-money laundering purposes.

Checks are carried out by our partners at Lifetime Legal for a non-refundable £65 (incl. VAT) fee, paid directly to them.

For more information please visit our website.



Particulars described on our website and in marketing materials are for indicative purposes only; their complete accuracy cannot be guaranteed. Details such as boundary lines, rights of way, or property condition should not be treated as fact. Interested parties are advised to consult their own surveyor, solicitor, or other professional before committing to any expenditure or legal obligations.