

PS

Flat 11, Branksome Gate, 52 Western Road - BH13 6EX

£2,950 PCM



Flat 11, Branksome Gate

52 Western Road, Poole

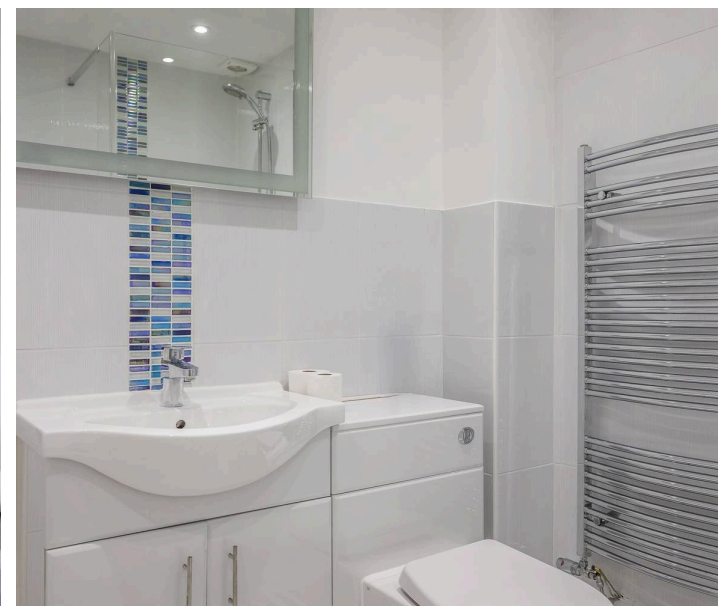
A well presented 3 double bedroom ground floor apartment located in a prestigious block benefiting from a patio area. En-suite to Master, large L shaped lounge diner, modern kitchen, utility room and 2 parking spaces, one being underground. Available now.

- 3 Double Bedroom Ground Floor Apartment
- Fully Furnished to a High Standard
- Recently Refurbished Throughout
- Private Patio Area
- Allocated Parking including Underground Space
- Spacious L-Shaped Lounge/Dining Area
- Prime BH13 Location
- Ensuite to Principal Bedroom
- Available Immediately
- Pets Considered
- EPC Rating: C



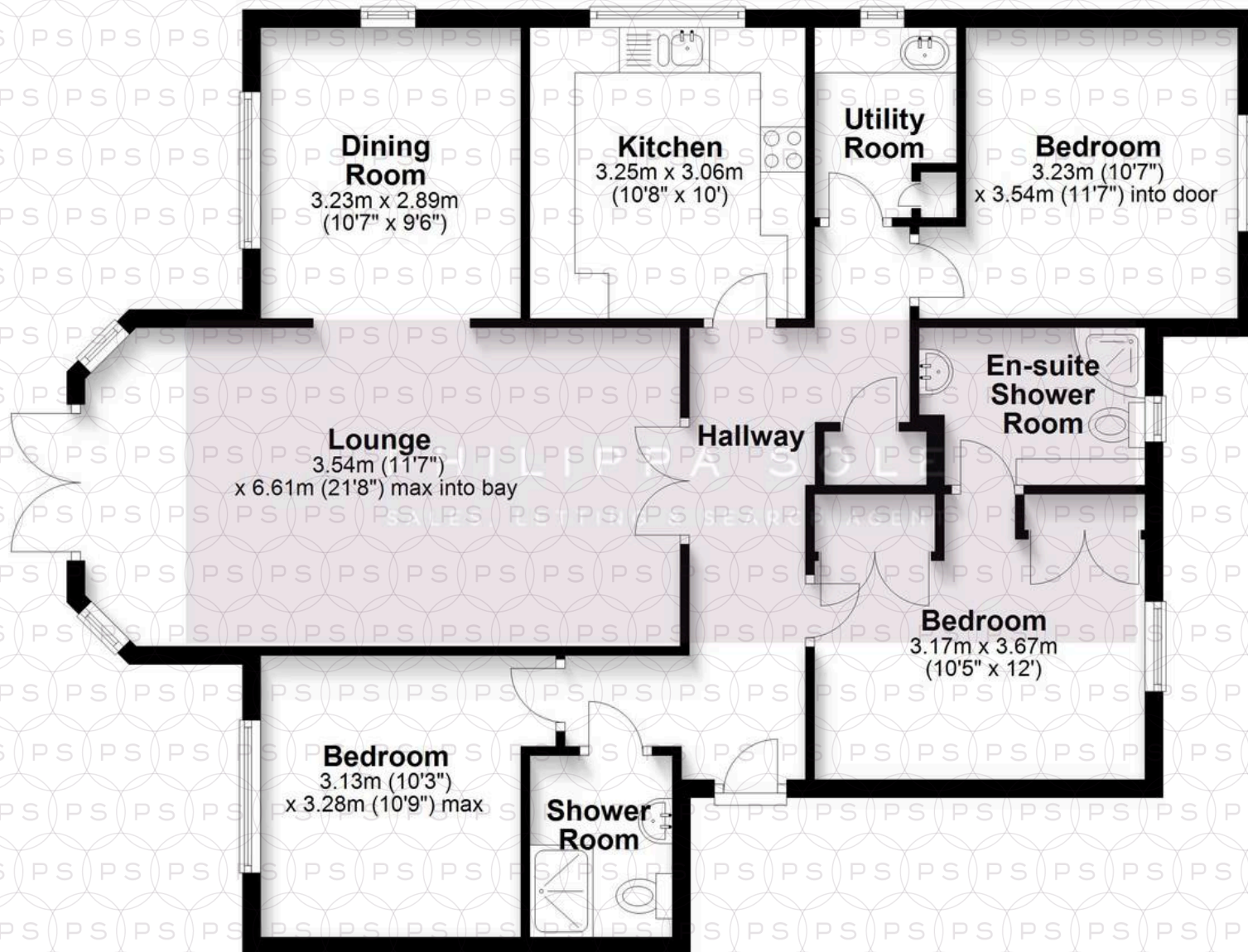
Approached via well maintained communal areas, this spacious ground floor flat enjoys access directly on to a patio area. The double aspect lounge overlooks the well maintained gardens and extends into the dining area. The modern fitted kitchen offers a range of integral appliances whilst the utility room houses the washing machine and tumble dryer, providing useful additional storage. The master bedroom has a range of fitted wardrobes and en-suite shower room, bedrooms two and three share the family bathroom. The apartment benefits from two parking spaces, one directly outside the front door and the other in the secure underground garaging which has lift access. The property has been well maintained with natural carpets and double glazing throughout.

Located in an enviable position being close to the local beach at Alum Chine yet just 500 metres from Westbourne town centre, with its bustling selection of restaurants, cafés, boutique shops as well as larger chains such as an M&S Food hall and Starbucks. The award-winning beaches of Alum Chine and Branksome Dene are just under a mile away. The local train station at Branksome provides a direct line into London Waterloo in under 2 hours. For wider shopping needs, Bournemouth and Poole are accessible via local bus routes.



Ground Floor

Approx. 99.9 sq. metres (1075.5 sq. feet)



Total area: approx. 99.9 sq. metres (1075.5 sq. feet)

Bournemouth Energy Floor Plans are provided for illustration/identification purposes only. Not drawn to scale, unless stated and accept no responsibility for any error, omission or mis-statement. Dimensions shown are to the nearest 7.5 cm / 3 inches. Total approx area shown on the plan may include any external terraces, balconies and other external areas. To find out more about Bournemouth Energy please visit www.bournemouthenergy.co.uk (Tel: 01202 556006)
Plan produced using PlanUp



Philippa Sole Ltd

Philippa Sole, 3A Springfield Road, Ashley Cross - BH14 0LG

01202 747999 • lettings@philippasole.co.uk • www.philippasole.co.uk

All statements in these particulars are provided without responsibility on the part of Philippa Sole Ltd or the vendor. Neither Philippa Sole Ltd nor any individual employed by or acting on its behalf is authorised to make any representation or warranty regarding this property. Room measurements are approximate, and no detailed surveys, service inspections, or fittings tests have been conducted.