



6 Kelling Close, Nottingham - NG5 5JL

Guide Price £230,000



6 Kelling Close

Nottingham, Nottingham

Well-presented 3 bed end-terraced home set in a cul-de-sac. Ideal for families, first-time buyers and investors! Lounge/diner, conservatory, kitchen and bathroom plus a SE-facin garden and parking!

Council Tax band: A

Tenure: Freehold

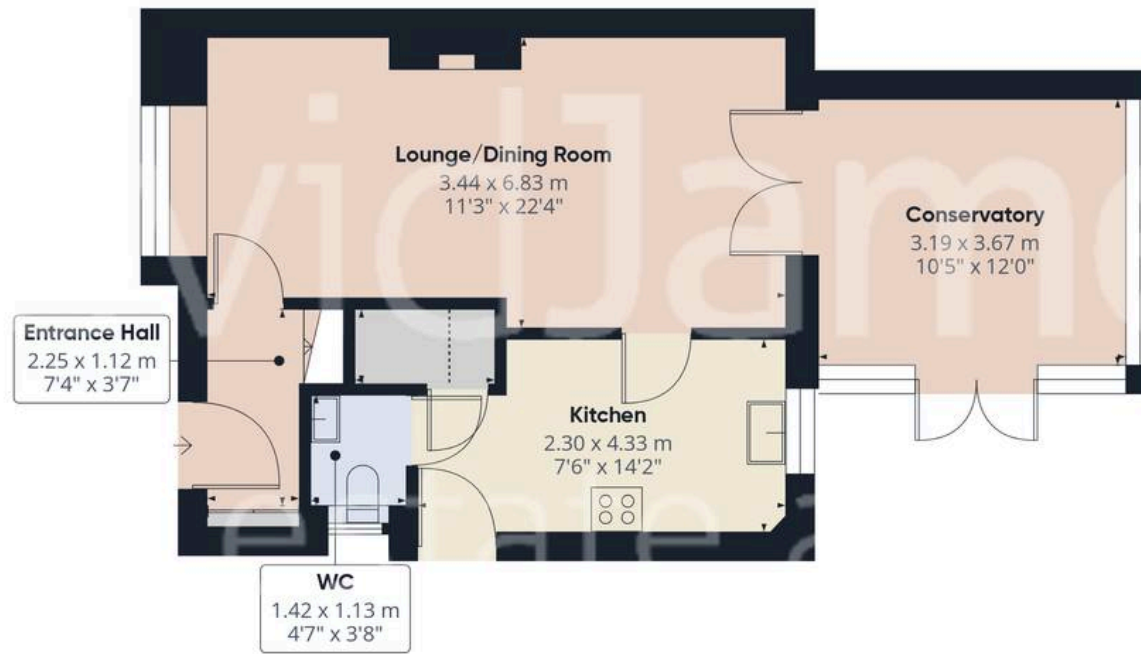
EPC Energy Efficiency Rating: B

EPC Environmental Impact Rating:

- Attractive end-terraced home with excellent kerb appeal
- Ideal for first-time buyers and growing families
- Prime cul-de-sac position, and close to a wide range of amenities, schools and public transport links
- Bright and spacious open-plan lounge dining room
- Generous conservatory with garden views
- Modern fitted kitchen with understairs storage and garden views
- Well appointed ground floor Wc
- Three well-proportioned bedrooms, including a principal with fitted wardrobes
- Stylish mono-chrome bathroom including corner shower and sleek tiling to wall and floor areas
- Landscaped rear garden with patio and raised decking—and off-street parking to the front







Floor 0



Floor 1



Approximate total area⁽¹⁾

85.6 m²

919 ft²

Reduced headroom

0.9 m²

10 ft²

(1) Excluding balconies and terraces

Reduced headroom

..... Below 1.5 m/5 ft

Calculations reference the RICS IPMS 3C standard. Measurements are approximate and not to scale. This floor plan is intended for illustration only.

GIRAFFE360



David James Estate Agents

98-100 Front Street, Arnold - NG5 7EJ

0115 955 5550 • arnold@david-james.com • www.david-james.com

These particulars are produced in good faith and are set out as a general guide only. Measurements are approximate and floor plans are for illustrative purposes only. Services have not been tested. We have established professional relationships with third-party suppliers for the provision of services to Clients, details of which can be found on the property listing page on our website.