



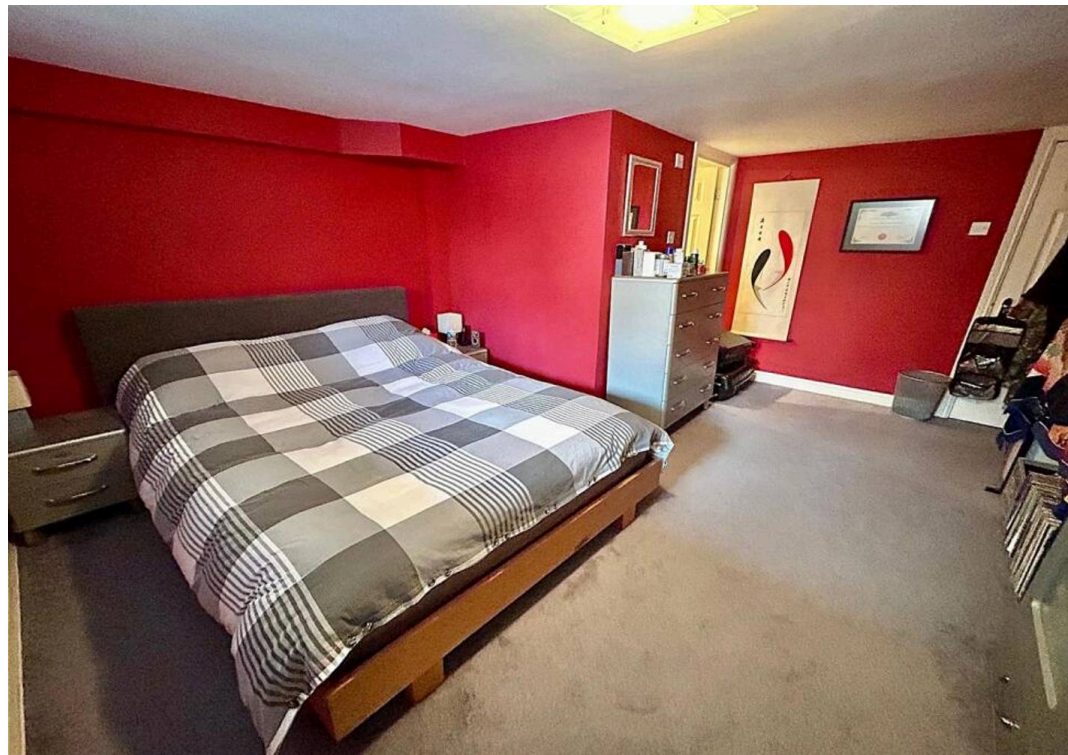
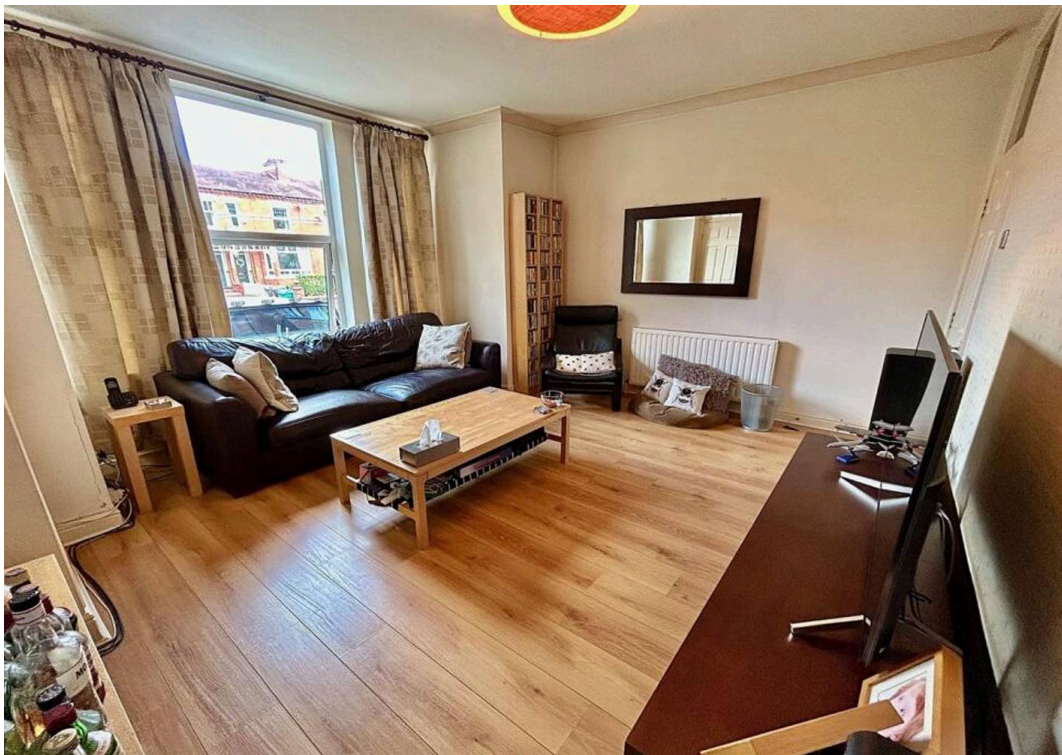
Flat 2, 38 Atwood Road, Didsbury, Manchester

Manchester

Offers Over £300,000

**GASCOIGNE
HALMAN**

THE AREA'S LEADING ESTATE AGENCY



Flat 2, 38 Atwood Road

Manchester

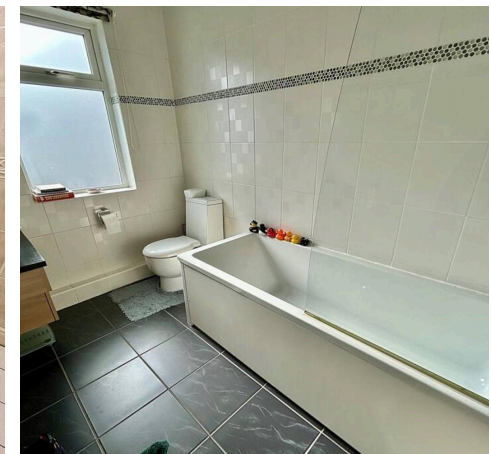
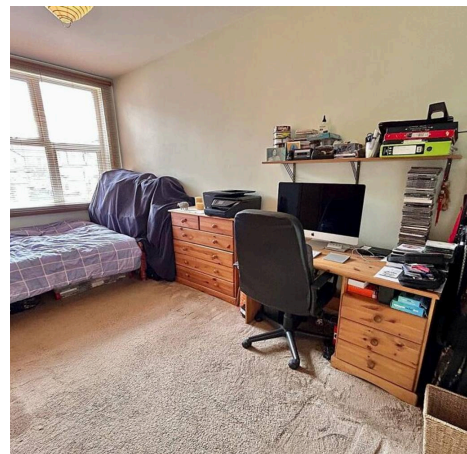
Council Tax band: B

Tenure: Leasehold

EPC Energy Efficiency Rating: C

EPC Environmental Impact Rating: D

- A Well Presented and Appointed Duplex Apartment
- Modern Fitted Kitchen and a Light and Airy Dining/Living Room
- Only Moments from Didsbury Village with its Array of Independent Shops, Bars, Restaurants and Excellent Transport Links
- Spacious Accommodation Measuring an Impressive 853 SQ FT
- Two Good Sized Bedrooms, Three Piece Stylish Bathroom Suite and an En-Suite Shower Room
- Internal Viewing Highly Recommended



Flat 2, 38 Atwood Road

Manchester

A stylish and well presented duplex apartment located within a highly sought after area, within a period conversion. Boasting spacious accommodation and situated only moments from Didsbury Village with its array of independent shops, bars, restaurants and excellent transport links. Offering a wealth of features such as high ceilings and large accommodation and measuring a highly impressive 853 SQ FT.

Internally to the ground floor the property comprises; welcoming entrance hallway, a modern fitted kitchen, a large bay fronted living/dining room with an abundance of natural light. A large double bedroom and a contemporary three piece bathroom suite completes the ground floor.

To the lower ground floor there is a spacious bay fronted double bedroom which boasts a three piece en-suite shower room.

The property is located only moments from Didsbury Village, excellent transport links and resident parking to both the front and rear of the property.

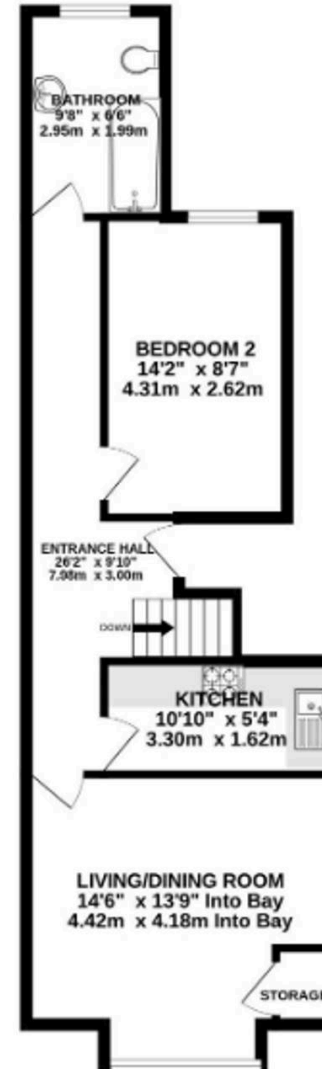
Didsbury Village is a vibrant hub, offering a wide range of restaurants, bars and shops. Manchester City Centre is approx. five miles away and is readily accessible via frequent bus services along Kingsway (A34) or Wilmslow Road (A5145). The Trafford Shopping centre is a 15 minute drive away, Manchester Airport is approx. 12 minutes away, and the property is well-placed for access to the national motorway and rail networks. Local schooling is



LOWER GROUND FLOOR
297 sq.ft. (27.6 sq.m.) approx.



GROUND FLOOR
555 sq.ft. (51.6 sq.m.) approx.



You can include any text here. The text can be modified upon generating your brochure.



THE AREA'S LEADING ESTATE AGENCY