

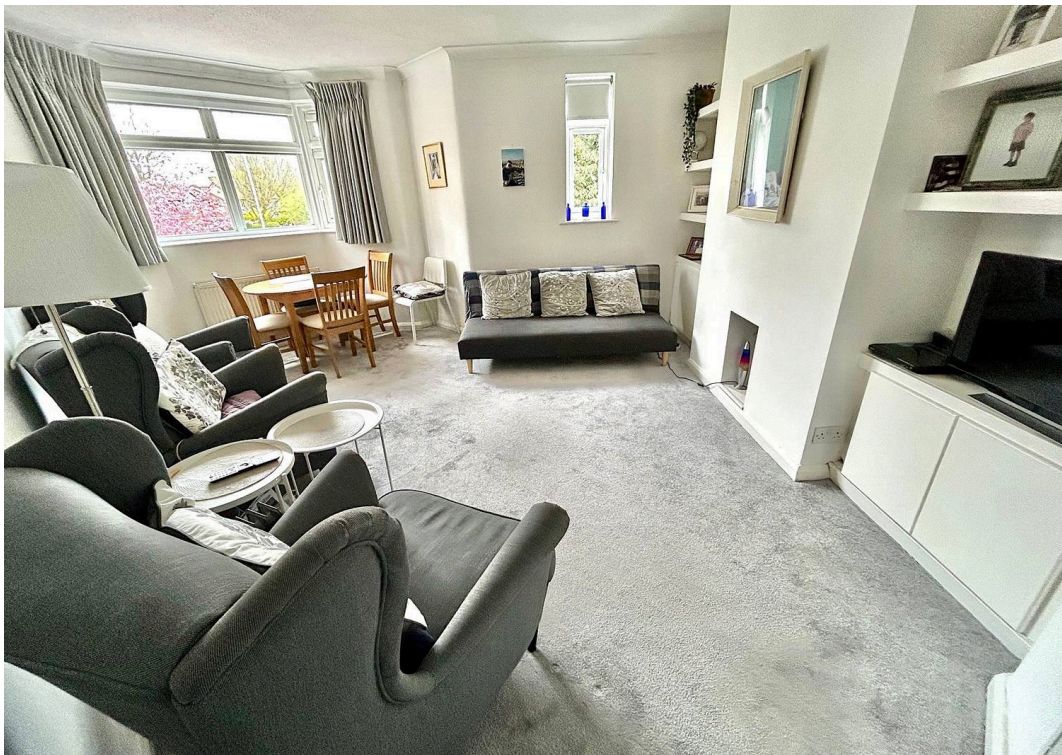


Flat 47 Ballbrook Court, Wilmslow Road, Wilmslow Road, Didsbury
Manchester

£270,000

**GASCOIGNE
HALMAN**

THE AREA'S LEADING ESTATE AGENCY



Flat 47 Ballbrook Court, Wilmslow Road

Wilmslow Road, Manchester

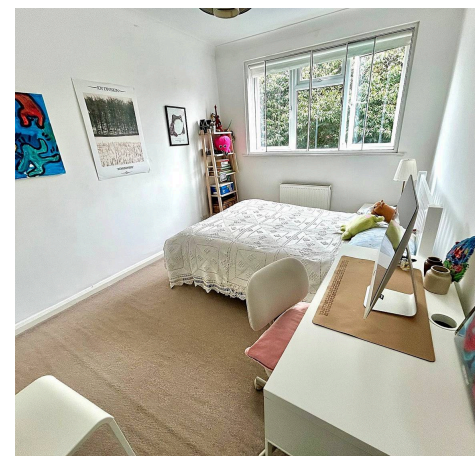
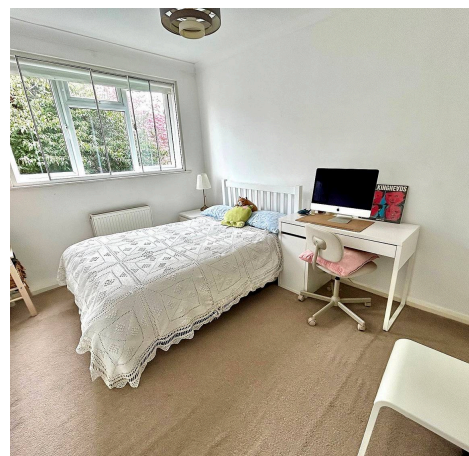
Council Tax band: B

Tenure: Leasehold

EPC Energy Efficiency Rating:

EPC Environmental Impact Rating:

- A Well Presented and Spacious First Floor Apartment
- Modern Fitted Kitchen with Integrated Appliances and Breakfast Bar
- Two Good Sized Double Bedrooms with Built in Wardrobes
- Large Bay Fronted Living/Dining Room and Three Piece Contemporary Bathroom Suite
- Located Close to Both Didsbury and West Didsbury Villages
- Ample Resident Parking, Secure Entry and Well Kept Communal Grounds



Flat 47 Ballbrook Court, Wilmslow Road

Wilmslow Road, Manchester

A light, airy and spacious two double bedroom first floor apartment. The apartment boasts stunning and immaculately presented accommodation and must be viewed. Ample resident parking and immaculately finished throughout and measures a highly impressive 747 SQ FT. Ballbrook Court is located with walking distance to both Didsbury and West Didsbury villages with their array of independent shops, bars, restaurants and excellent transport links.

Internally the property comprises of a welcoming entrance hallway with a useful utility cupboard. A modern fitted kitchen with access to the rear of the property and boasts an array of integrated appliances and a breakfast bar. Two large double bedrooms both complete with built in wardrobes. A contemporary three piece bathroom suite and a large bay fronted living/dining room which completes the internal accommodation.

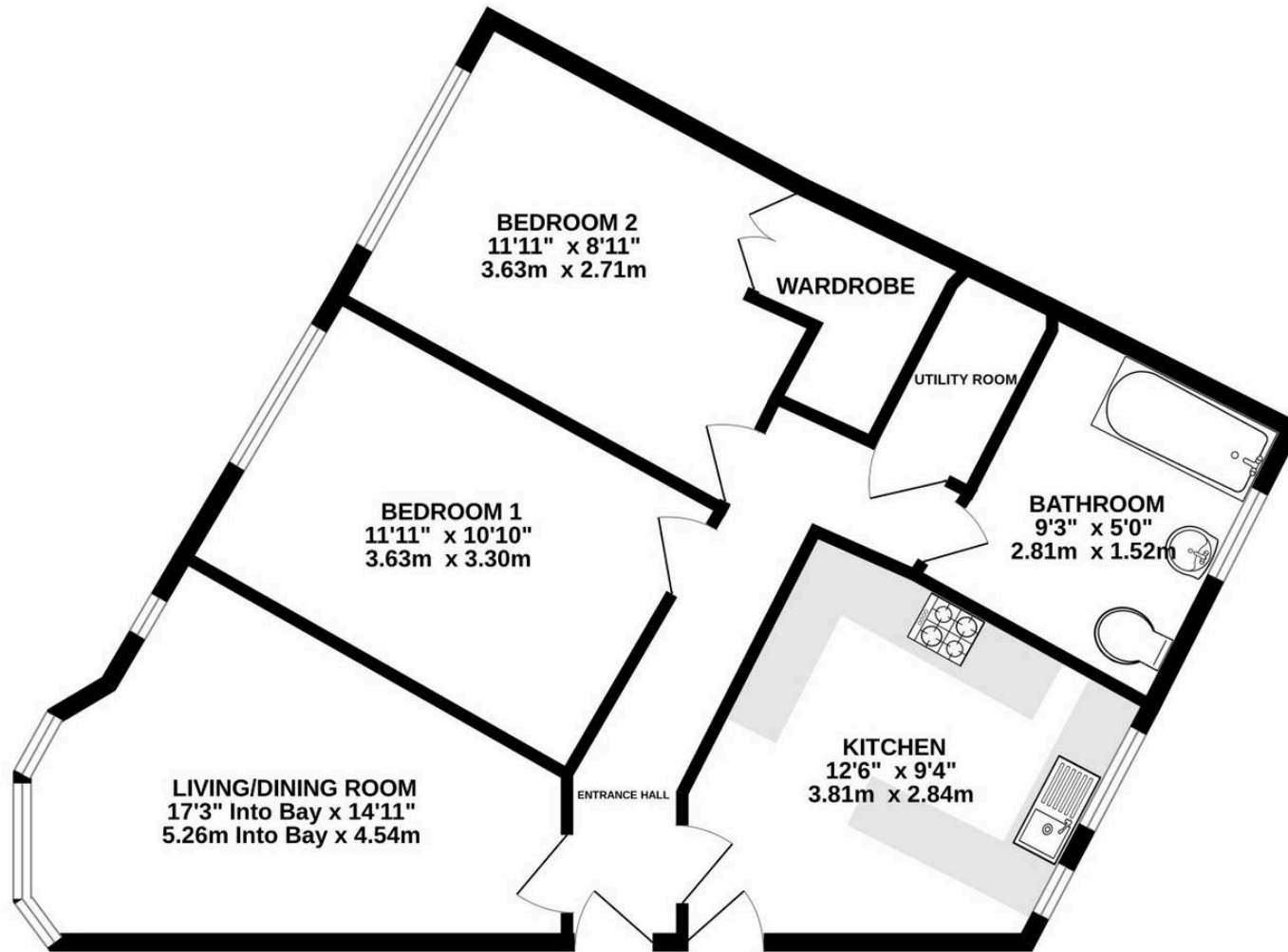
The property boasts an immaculate finish throughout and is ideal for a wide range of buyers.

Externally there is ample resident parking, secure entry to the apartment and well kept communal grounds.

Didsbury Village is a vibrant hub, offering a wide range of restaurants, bars and shops. Manchester City Centre is approx. five miles away and is readily accessible via frequent bus services along Kingsway (A34) or Wilmslow Road (A5145). The Trafford Shopping centre is a 15 minute drive away, Manchester Airport is approx. 12 minutes away, and the property is well placed for access to the national



FIRST FLOOR
747 sq.ft. (69.4 sq.m.) approx.



TOTAL FLOOR AREA : 747 sq.ft. (69.4 sq.m.) approx.
Measurements are approximate. Not to scale. Illustrative purposes only
Made with Metropix ©2026

You can include any text here. The text can be modified upon generating your brochure.



THE AREA'S LEADING ESTATE AGENCY