

*Symonds
Taylor*

52 Albemarle Avenue, Jesmond

Newcastle Upon Tyne

Offers Over £230,000



52 Albemarle Avenue

Jesmond, Newcastle Upon Tyne

This first floor apartment has a great location in the highly sought after High West Jesmond, with 2 bedrooms, generous living room and a dining kitchen this property has a south facing courtyard will appeal to first time buyers and young professionals and an internal inspection is essential.

Accommodation comprises:

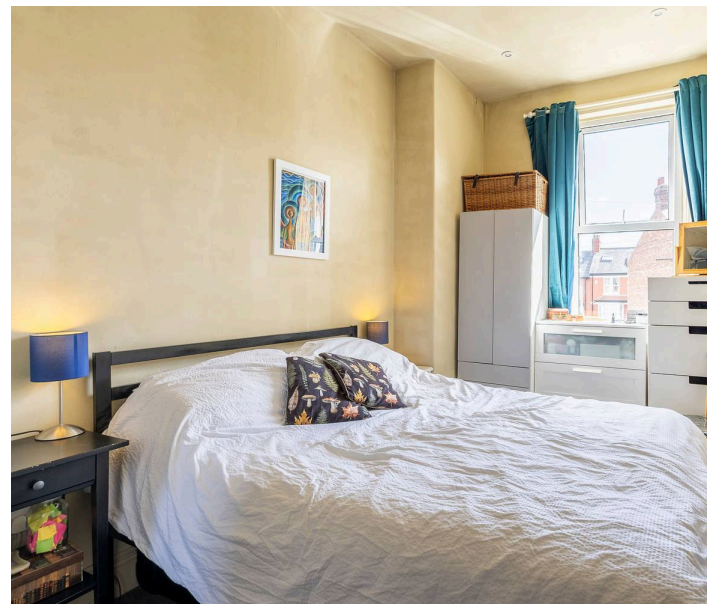
Ground floor: Entrance hallway.

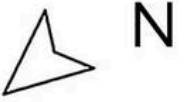
First floor: Landing, sitting room, dining kitchen, rear lobby/utility area, shower room/wc, bedroom 1, bedroom 2.

Outside: Rear south facing paved courtyard, 2 stores.

Council Tax band: B

Tenure: Leasehold





52 ALBERMARLE AVENUE, JESMOND, NE2 3NQ

APPROXIMATE GROSS INTERNAL AREA 73 SQ M 790 SQ FT - NOT TO SCALE - FOR ILLUSTRATIVE PURPOSES ONLY
All measurements and fixtures including doors and windows are approximate and should be independently verified.



Symonds Taylor

101 St. Georges Terrace, Jesmond - NE2 2DN

0191 338 9999 • hello@symondstaylor.co.uk • www.symondstaylor.co.uk

All descriptions, plans or references to condition are given in good faith only. Whilst every endeavour is made to ensure accuracy, please check with us on any points of especial importance to you.