



27 The Waterfront, Exhall

Coventry

Part Buy, Part Rent **£65,000**



**SHELDON
BOSLEY
KNIGHT**

LAND AND
PROPERTY
PROFESSIONALS

27 The Waterfront

Exhall, Coventry

50% SHARED OWNERSHIP

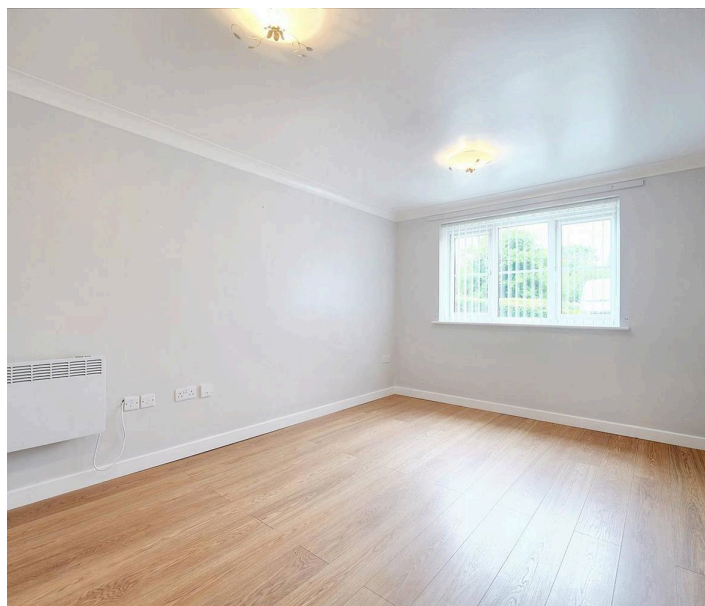
Sheldon Bosley Knight are delighted to welcome to market this well positioned two bedroom apartment situated at The Waterfront, Exhall, Coventry, overlooking the Black Bank Pool. This property is well presented throughout, offering excellent transport links and close to local shops and schools. In brief via the communal entrance the home comprises of an entrance hall, lounge/diner, kitchen, two bedrooms and a bathroom. To the rear of the apartment is an allocated parking space for a single vehicle. This property would make an excellent first time buy or buy to let investment, viewings are essential, via the agent. COUNCIL TAX BAND A - EPC TBC

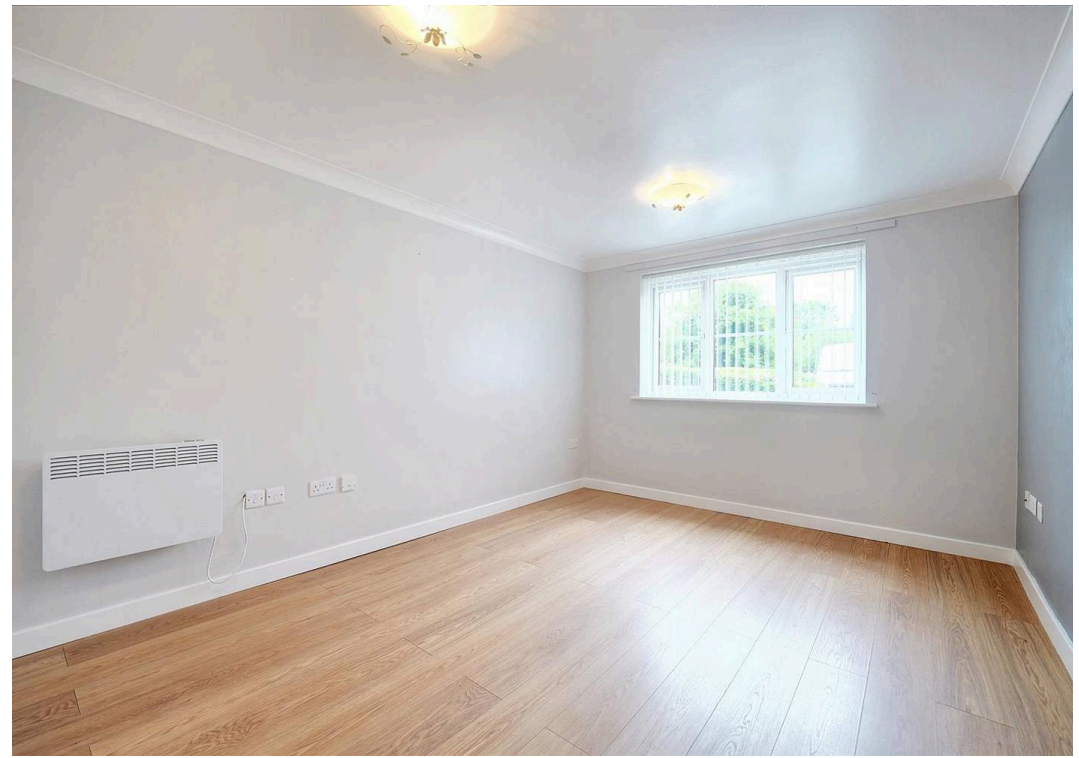
Available 50% shared ownership or 100% - monthly charges will vary accordingly.

Council Tax band: A

Tenure: Leasehold

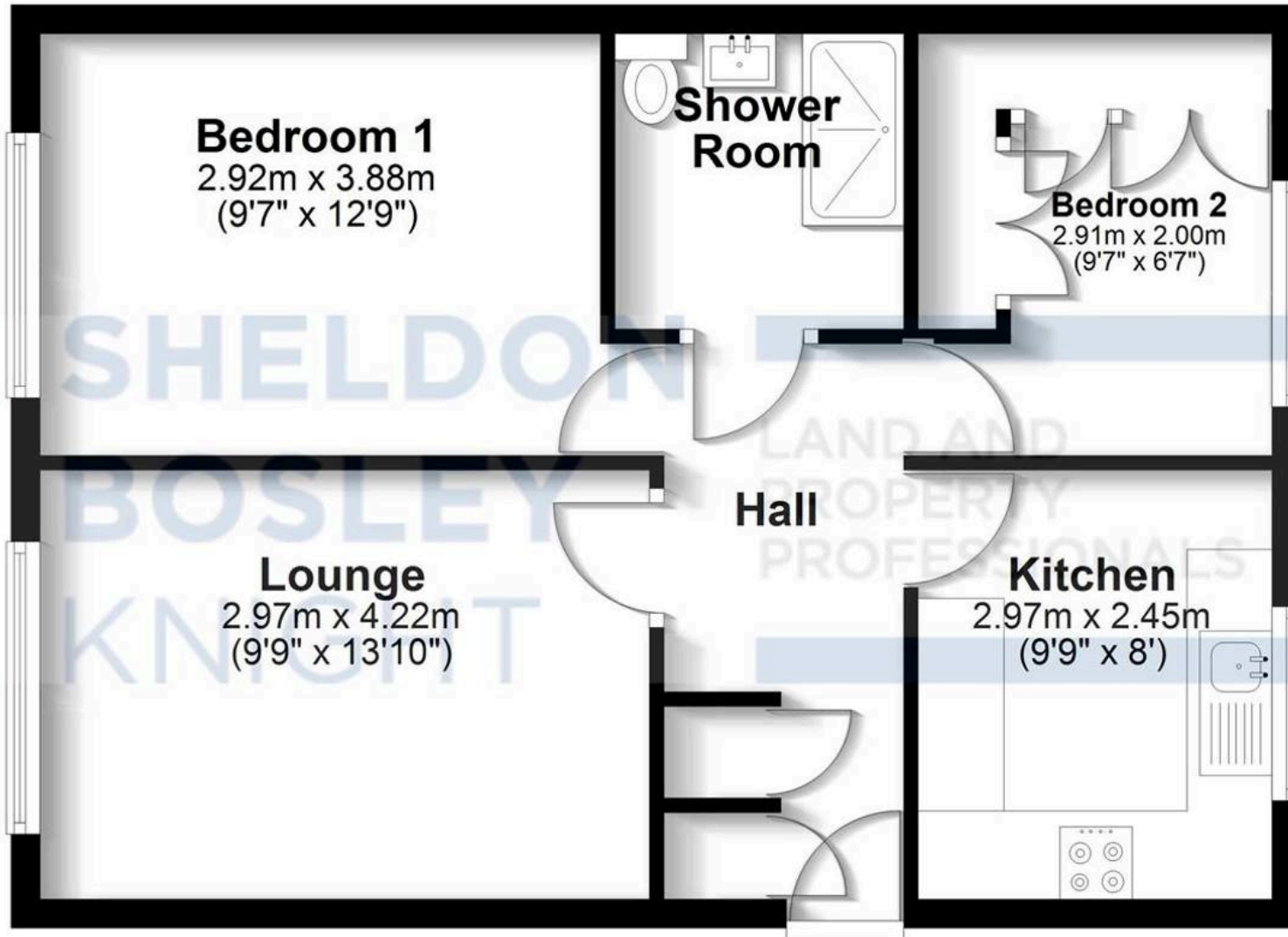
- Purpose Built Apartment
- Spacious Lounge
- Modern Kitchen With Hob & Oven
- Two Bedrooms
- Shower Room
- Electric Panel Heating
- Allocated Parking Space
- No Upward Chain
- Available As 50% Shared Ownership Or 100% Share
- COUNCIL TAX BAND A - EPC





Ground Floor

Approx. 50.2 sq. metres (540.8 sq. feet)



Total area: approx. 50.2 sq. metres (540.8 sq. feet)

All efforts have been made to ensure the measurements are accurate on this floor plan, however these are for guidance purposes only.

Plan produced using PlanUp.



Sheldon Bosley Knight Nuneaton

Sheldon Bosley Knight, 39 Newdegate Street, Nuneaton - CV11 4ER

02476374949 • nuneaton@sheldonbosleyknight.co.uk • www.sheldonbosleyknight.co.uk/