



Fedden Road, Moreton-In-Marsh

Guide Price £525,000



Situated on the popular Moreton Park development, this four-bedroom detached house benefits from spacious downstairs living accommodation and a large garden making it the ideal home.

Upon entrance to the property, the hallway invites you into the open plan kitchen/diner at the rear of the house which benefits from an abundance of natural light from the beautiful glass roof at one end of the room. With modern white cabinets, the kitchen has had recent upgrades including; backsplash, sink, worktop and appliances, making it the perfect space to host. There is also a separate utility room off of the kitchen space. Two sets of patio doors to the rear of the dining area, open the space out and into the generously sized garden. Back through the hallway, there is a downstairs cloakroom and a study to the front of the property - providing the perfect work from home office. The spacious living room is the ideal space to relax.

Upstairs, the principal bedroom benefits from an ensuite shower room and a mirrored, built-in wardrobe. There are a further two double bedrooms and a single bedroom, providing ample space for family and guests. The main bathroom has a contemporary finish, with recently replaced flooring and there is a spacious airing cupboard on the landing that provides useful storage space.

Outside, the generously-sized garden with patio and lawn area provides the ideal space to enjoy the summer months and allows side access to the garage. There is a single garage with tandem driveway parking for two cars to the right hand side of the property.

EPC: C

Council Tax Band: E

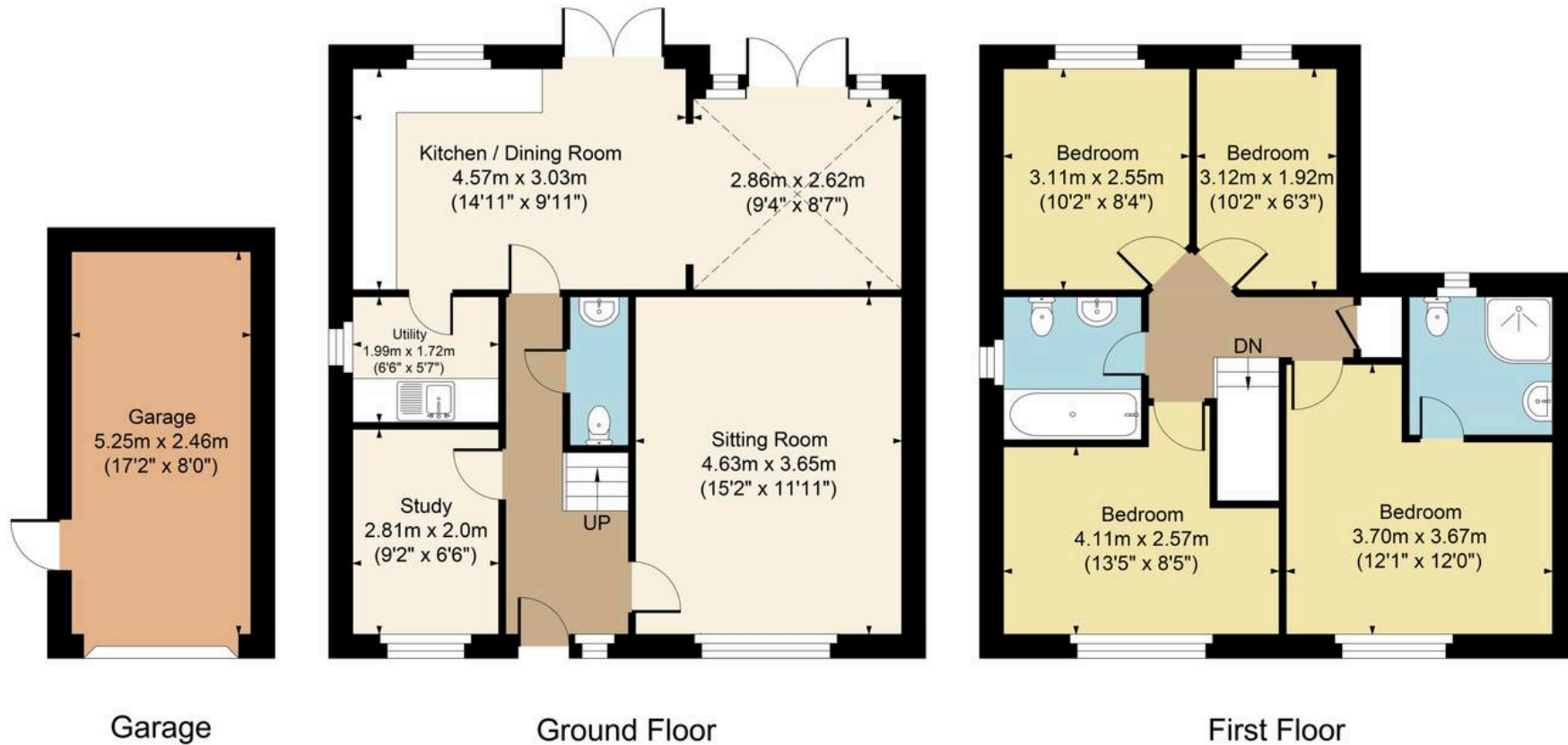
Tenure: Freehold

Maintenance Charge: Approx. £270 per annum.





Main House Approx. Gross Internal Area:- 106.39 sq.m. 1145 sq.ft.  
 Garage Approx. Gross Area:- 12.92 sq.m. 139 sq.ft.  
 Total Approx. Gross Area:- 119.31 sq.m. 1284 sq.ft.



FOR ILLUSTRATIVE PURPOSES ONLY-NOT TO SCALE  
 The position & size of doors, windows, appliances and other features are approximate only.  
 □ □ Denotes restricted head height  
[www.dmlphotography.co.uk](http://www.dmlphotography.co.uk)