



2 Newton Terrace, Kilgetty

£160,000 Freehold

2 bedrooms • garden • modern interior • Perfect house for a First Time buyer





Introducing this beautifully presented two-bedroom mid-terraced house, thoughtfully designed to offer a comfortable and contemporary living experience. This property is ideally suited to first-time buyers seeking a stylish and low-maintenance home in a convenient location.

Upon entering the property, you are welcomed by a porch way that leads to the kitchen. The lounge is bright and inviting, featuring modern finishes and ample space for both relaxation and entertaining guests. The neutral décor throughout the house creates a warm and welcoming atmosphere, allowing you to easily personalise the space to suit your tastes.

The modern kitchen is fitted with high-quality units and integrated appliances (including oven, hob, and extractor fan), providing both functionality and style. There is plenty of storage and worktop space, making it ideal for preparing meals and hosting family or friends. The living space is convenient and leads onto the garden through patio doors.

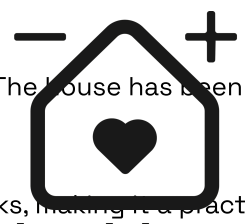
Upstairs, you will find two generously proportioned bedrooms. The principal bedroom is large enough to accommodate a double bed and additional furniture, while the second bedroom offers flexibility for use as a guest room, nursery, or home office. Both bedrooms benefit from large windows, ensuring plenty of natural light throughout the day.

The family bathroom is finished to a high standard, featuring modern fixtures and fittings, a contemporary suite, and attractive tiling. There is a bath, a wash basin with storage, and a WC.

Additional features of this property include gas central heating, double glazing throughout. The house has been maintained to a high standard, ensuring that new owners can move in with peace of mind.

The property is perfectly positioned for access to local amenities, schools, and transport links, making it a practical choice for those looking to settle in a well-connected area. The combination of modern interiors, thoughtful design, and a friendly neighbourhood creates an ideal setting for first-time buyers.

In summary, this two-bedroom mid-terraced house offers a fantastic opportunity to purchase a move-in ready home



blackbear



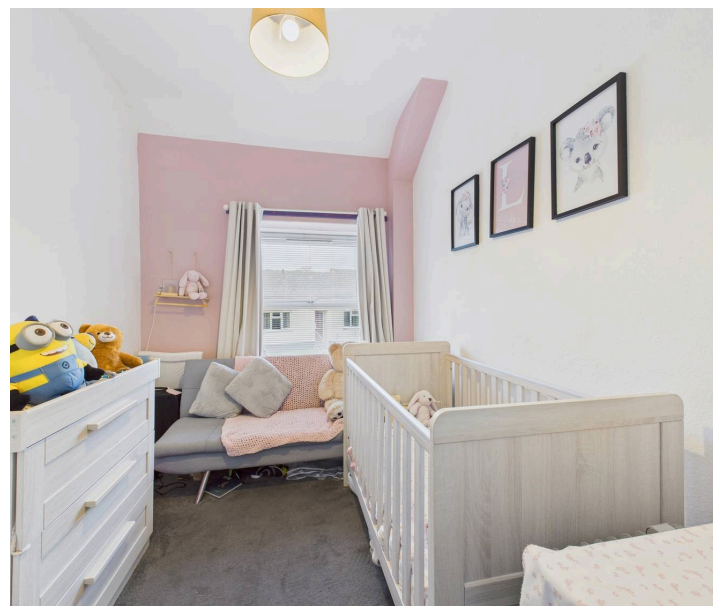
Kitchen
15' 0" x 7' 11" (4.57m x 2.41m)

Bedroom
7' 10" x 12' 3" (2.39m x 3.73m)

Bedroom
11' 8" x 9' 9" (3.56m x 2.97m)

Lounge
11' 7" x 14' 0" (3.53m x 4.27m)

Bathroom
6' 8" x 8' 10" (2.03m x 2.69m)





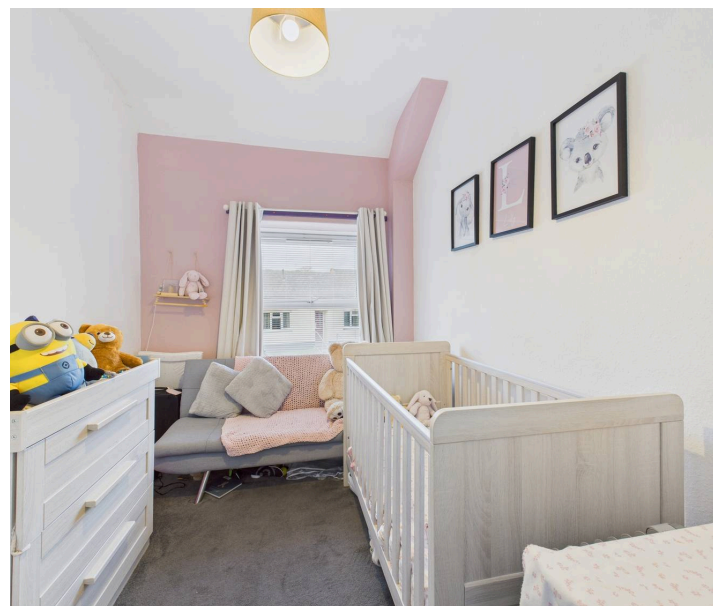
Kitchen
15' 0" x 7' 11" (4.57m x 2.41m)

Bedroom
7' 10" x 12' 3" (2.39m x 3.73m)

Bedroom
11' 8" x 9' 9" (3.56m x 2.97m)

Lounge
11' 7" x 14' 0" (3.53m x 4.27m)

Bathroom
6' 8" x 8' 10" (2.03m x 2.69m)





Floor 0



Floor 1



Approximate total area⁽¹⁾
59.7 m²
641 ft²

blackbear

(1) Excluding balconies and terraces

Calculations reference the RICS IPMS 3C standard. Measurements are approximate and not to scale. This floor plan is intended for illustration only.

GIRAFFE360

You can include any text here. The text can be modified upon generating your brochure.

