



2a Alma Cottages Station Road, Kilgetty

£185,000 Freehold

Three Bedrooms • Family Bathroom • Garden with Patio • Open plan kitchen/living area • Large breakfast bar • Utility space





This beautifully presented three bedroom semi detached house offers an inviting and contemporary living environment, ideal for families and professionals alike.

Upon entering, you are welcomed by a generous open plan kitchen and living area, thoughtfully designed to provide both comfort and functionality. The kitchen is fitted with modern units and appliances, complemented by a large breakfast bar that serves as a perfect spot for casual dining or entertaining guests.

Adjacent to the kitchen, a dedicated utility space provides additional convenience for laundry and storage needs, ensuring the main living area remains uncluttered and organised.

The spacious living area benefits from ample natural light, creating a warm and welcoming atmosphere throughout the day. Upstairs, the property features three well proportioned bedrooms, each offering comfortable accommodation and flexibility to suit a variety of lifestyles (whether you require guest rooms, home office space, or a nursery).

The family bathroom is tastefully finished with contemporary fixtures and fittings, providing a relaxing environment for daily routines. The overall layout of the home has been carefully considered to maximise space and flow, making it ideal for both every-day living and entertaining.

Located in a sought after residential area, this property combines the tranquility of a suburban setting with easy access to local amenities, schools, and transport links.

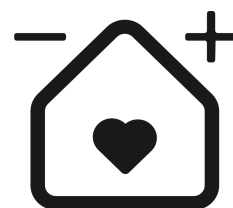


Co. Wick, Ireland

Ter

EPC Environmental Impact Rating: D

EPC Environmental Impact Rating: D



blackbear



Kitchen

12' 5" x 7' 11" (3.79m x 2.41m)

Living Room

19' 3" x 15' 8" (5.87m x 4.78m)

Bedroom

9' 6" x 8' 9" (2.90m x 2.67m)

Bedroom

9' 4" x 8' 5" (2.85m x 2.57m)

Bedroom

8' 10" x 7' 1" (2.69m x 2.16m)

Bathroom

6' 2" x 7' 10" (1.88m x 2.39m)





Kitchen

12' 5" x 7' 11" (3.79m x 2.41m)

Living Room

19' 3" x 15' 8" (5.87m x 4.78m)

Bedroom

9' 6" x 8' 9" (2.90m x 2.67m)

Bedroom

9' 4" x 8' 5" (2.85m x 2.57m)

Bedroom

8' 10" x 7' 1" (2.69m x 2.16m)

Bathroom

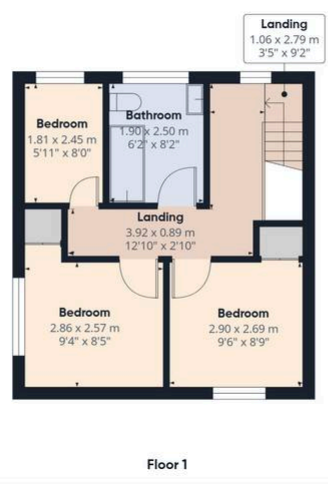
6' 2" x 7' 10" (1.88m x 2.39m)





Approximate total area⁽¹⁾
 72.8 m²
 783 ft²

Reduced headroom
 1.3 m²
 14 ft²



blackbear ⁽¹⁾ Excluding balconies and terraces

Reduced headroom
 Below 1.5 m/5 ft

Calculations reference the RICS IPMS 3C standard. Measurements are approximate and not to scale. This floor plan is intended for illustration only.

GIRAFFE360



You can include any text here. The text can be modified upon generating your brochure.

