



Powis Gardens, London, NW11

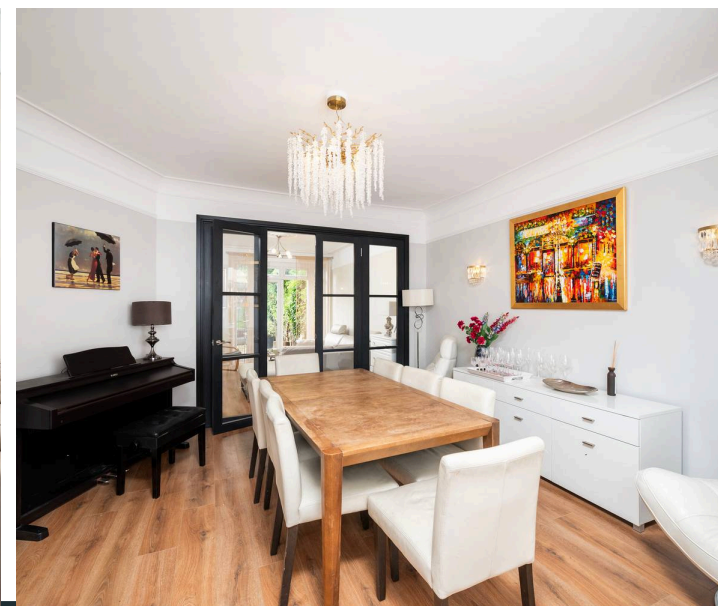
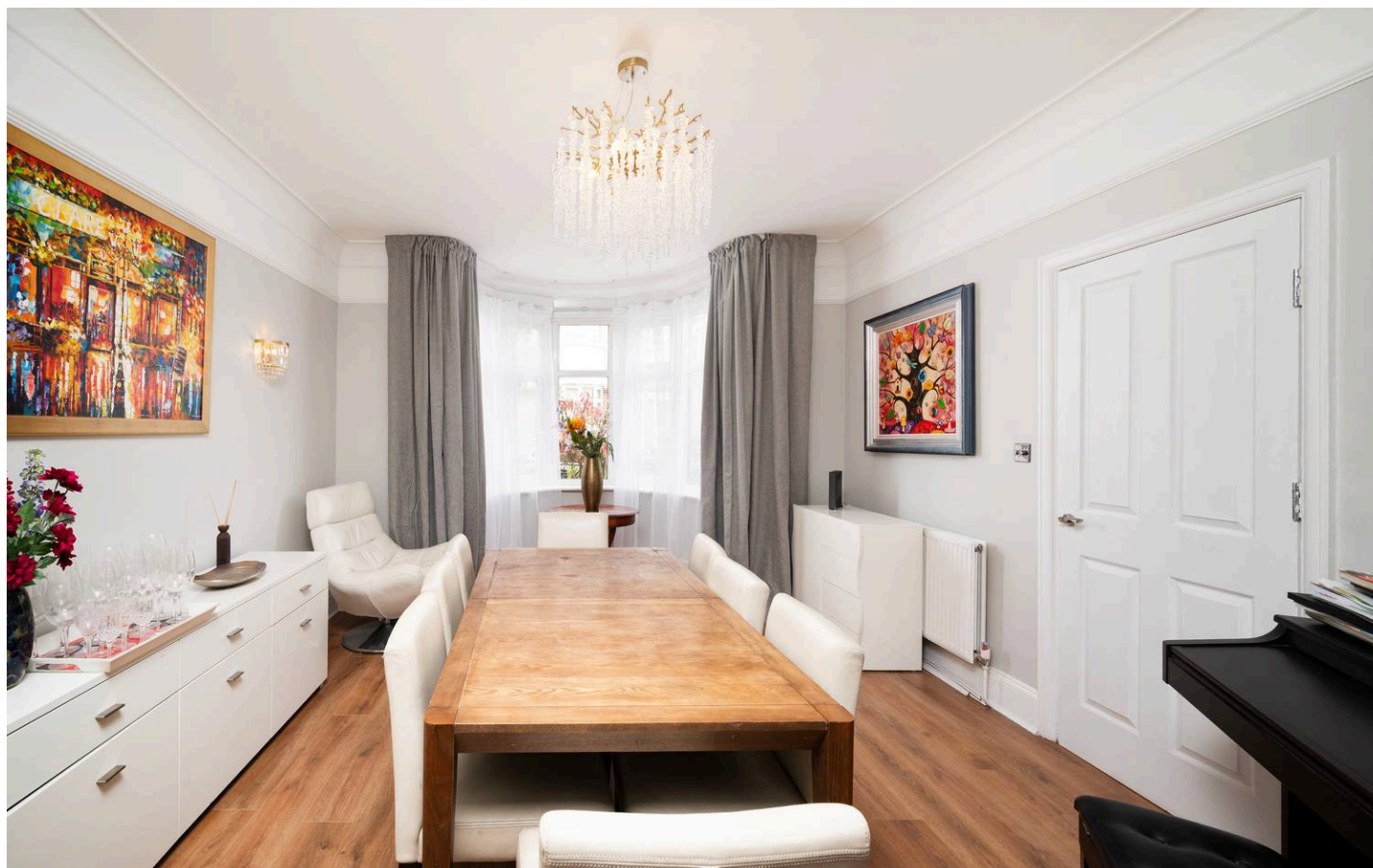
£1,250,000

Pearl & Chance

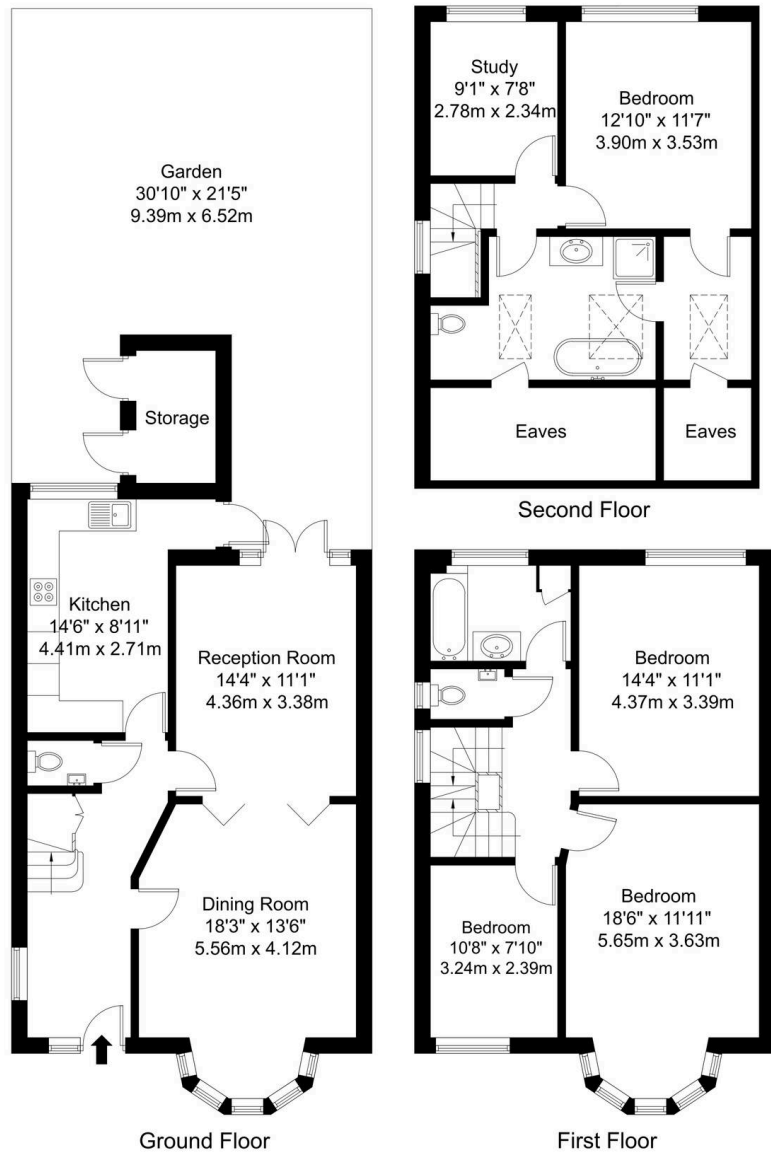
Powis Gardens, London, NW11

This recently refurbished five bedroom, two-bathroom semi-detached family home is located on a quiet cul-de-sac road in the heart of Golders Green, arranged over three floors and extending to approximately 1,843 sq ft. The ground floor offers two reception rooms and a modern kitchen to the rear with direct access to the garden, along with a downstairs WC. Upstairs are five bedrooms and two bathrooms, including a newly converted loft providing two bedrooms, a large bathroom with walk-in shower, and a walk-in wardrobe. The main loft bedroom also benefits from a Juliette balcony. The rear garden extends to just over 30 ft with a mix of patio and lawn. Within walking distance of Golders Green Underground station and the amenities along Golders Green Road.

- Tenure: Freehold
- Council Tax Band: F
- Five Bedrooms
- Two Bathrooms
- Newly Refurbished
- Newly Converted Loft
- Downstairs WC
- Quiet Cul-de-Sac
- Close to Golders Green Underground Station







Powis Gardens, NW11

Total Gross Internal Area = 171.2 sq m / 1843 sq ft

All Measurements are approximate and for identification guideline purposes only, not to scale.
Compliant with the RICS code of measuring practice



Pearl & Chance

1 Hoop Lane, London - NW11 8JR

0208 059 5559

info@pearlandchance.co.uk

<http://pearlandchance.co.uk>

IMPORTANT: These sales particulars have been prepared as a general guide only. A detailed survey has not been carried out, nor the services, appliances and fittings tested. Room sizes should not be relied upon for furnishing purposes and are approximate. If floor plans are included, they are for guidance only and illustration purposes only and may not be to scale. If there are any important matters likely to affect your decision to buy, please contact us before viewing the property.