



HARRISON  
Sales &  
Lettings  
GARDENSON

Lysander Way, Moreton-In-Marsh



This impressive four bedroom detached home offers spacious and versatile family living in a highly sought-after location. Conveniently placed for local train links to London and Oxford, as well as a range of nearby amenities such as cafes, restaurants and shops. The upgraded kitchen is thoughtfully designed in an open plan layout with the dining area, providing an ideal space for family meals or entertaining guests, while a separate utility room adds further practicality. In addition there is a separate sitting room with modern fitted shutters.

The property boasts an abundance of natural light coming in from the South-Westerly facing, rear garden. The garden itself is beautifully matured, with a terraced pergola providing the perfect space to unwind or entertain in the summer months.

On the first floor the property features a main bathroom, four generously sized double bedrooms, with the principal bedroom benefitting from a modern en-suite shower room for added privacy and comfort.

This bright and spacious home, combines modern conveniences with well-proportioned accommodation, making it an ideal choice for families or those seeking extra space. Early viewing is highly recommended to fully appreciate the quality and lifestyle on offer.

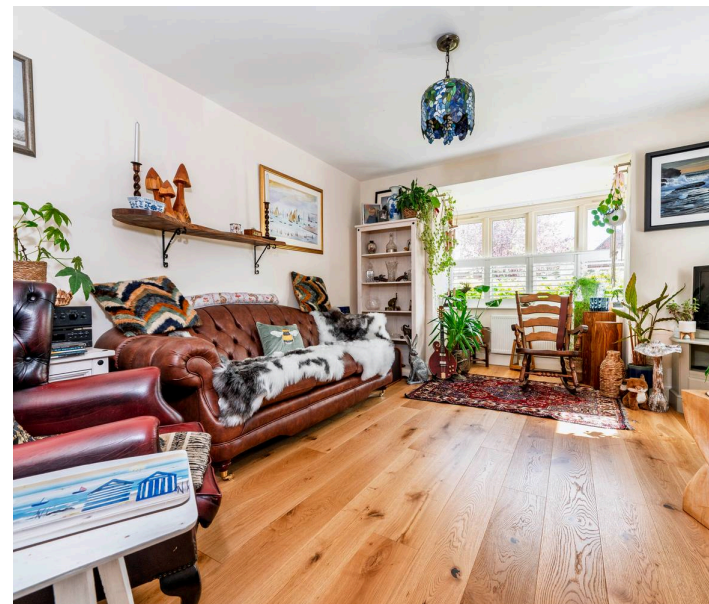
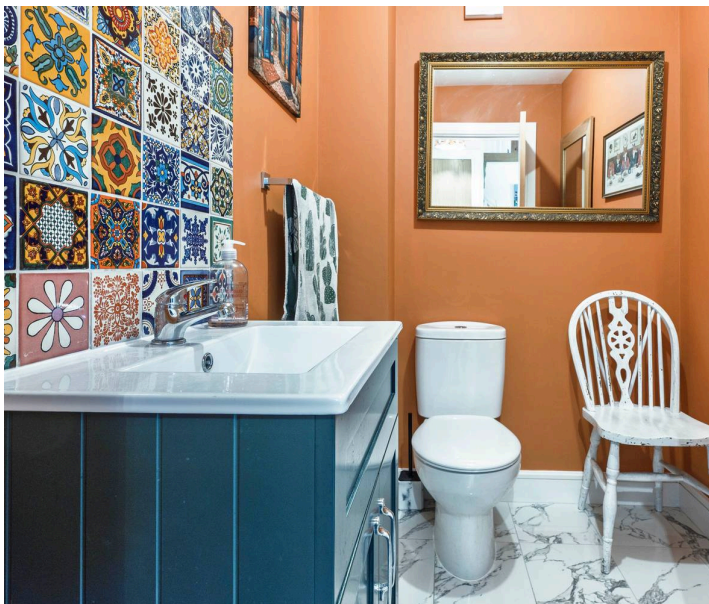
Tenure: Freehold

Council Tax Band: E

EPC: TBC

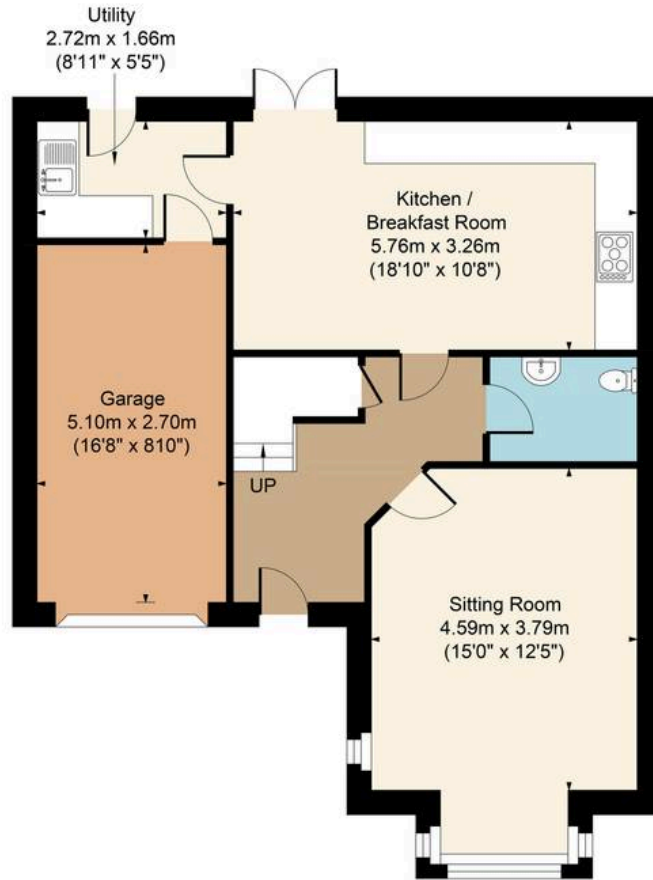
Maintenance Fee: Approximately £270 per annum

what3words:///polo.acclaimed.report

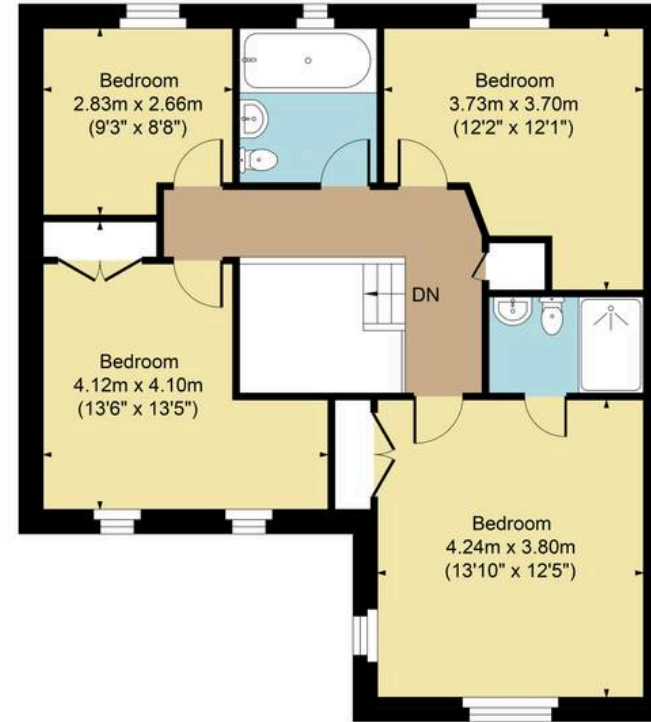




Main House Approx. Gross Internal Area:- 124.88 sq.m. 1344 sq.ft.  
 Garage Approx. Gross Area:- 13.77 sq.m. 148 sq.ft.  
 Total Approx. Gross Area:- 138.65 sq.m. 1492 sq.ft.



Ground Floor



First Floor

FOR ILLUSTRATIVE PURPOSES ONLY-NOT TO SCALE  
 The position & size of doors, windows, appliances and other features are approximate only.  
 □□□ Denotes restricted head height  
[www.dmlphotography.co.uk](http://www.dmlphotography.co.uk)