



© SAB Estates

Thorn Close, Northolt

Guide Price **£585,000**

SAB
ESTATES



© SAB Estates

Thorn Close

Northolt

- For Sale by Auction
- 6-Bed HMO
- All En-suite
- Annual Rent of £71,400
- 1260 sq ft / 117 sq m
- 2 Kitchens
- Private Garden
- Potential for Extension STPP

Council Tax band: D

Tenure: Freehold

EPC Energy Efficiency Rating: D

EPC Environmental Impact Rating: D

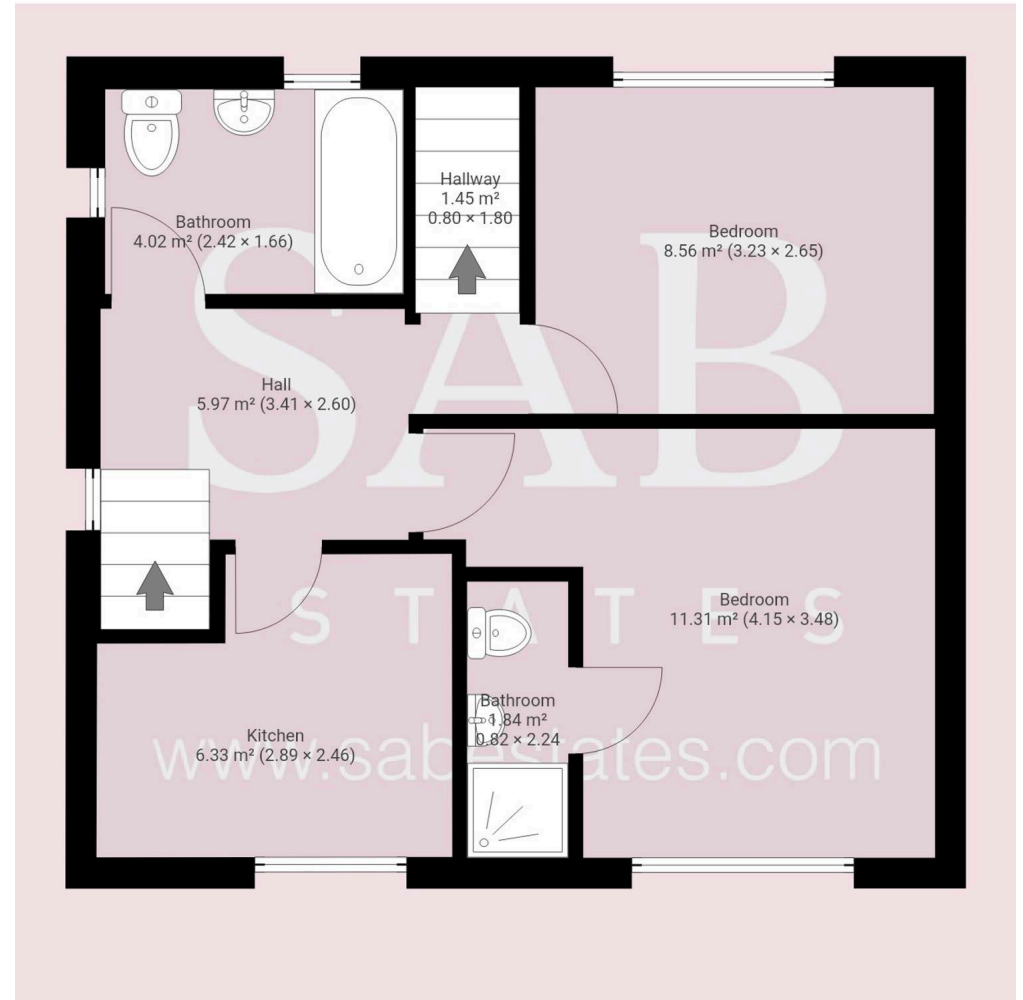
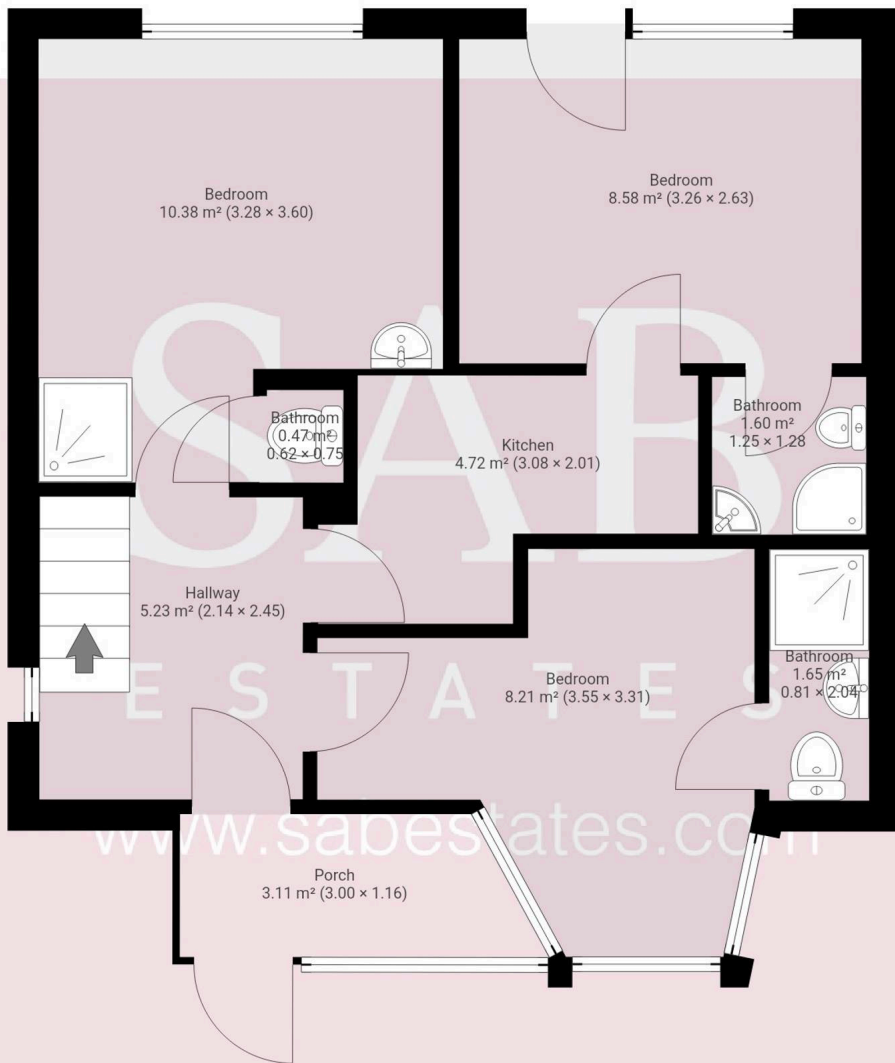


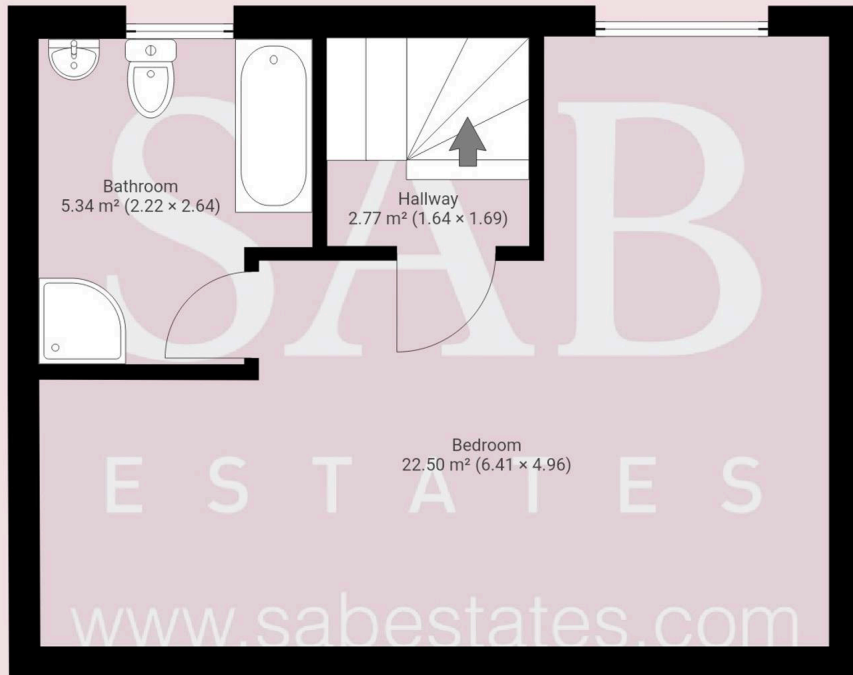
B Estates



B Estates









SAB Estates

236-238 Ruislip Road, Greenford - UB6 9RS

020 8575 2929 • info@sabestates.com • www.sabestates.com/