



4 Freeways Montalan Crescent, Selsey, PO20 9BL

Guide Price £134,950 Freehold

4 Freeways Montalan Crescent

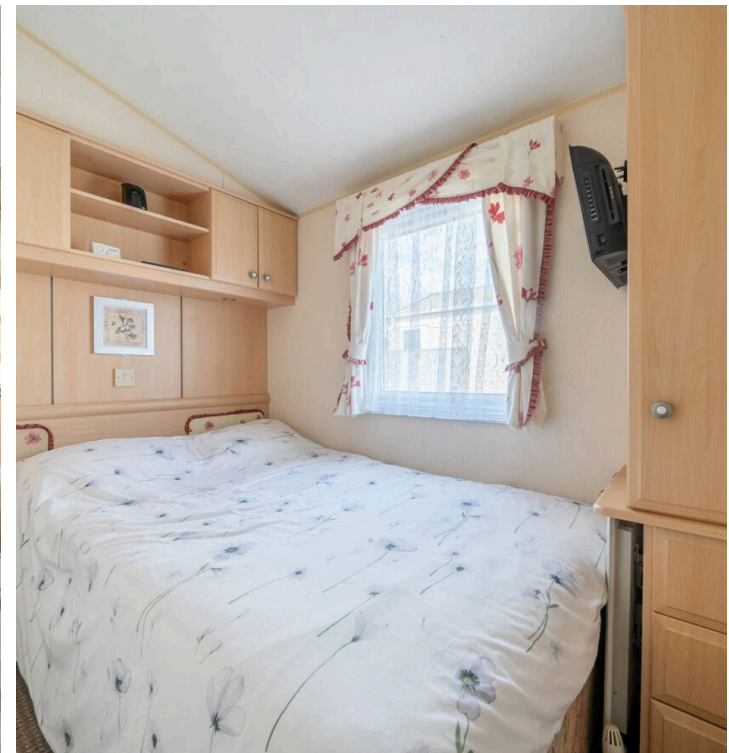
Selsey, Chichester

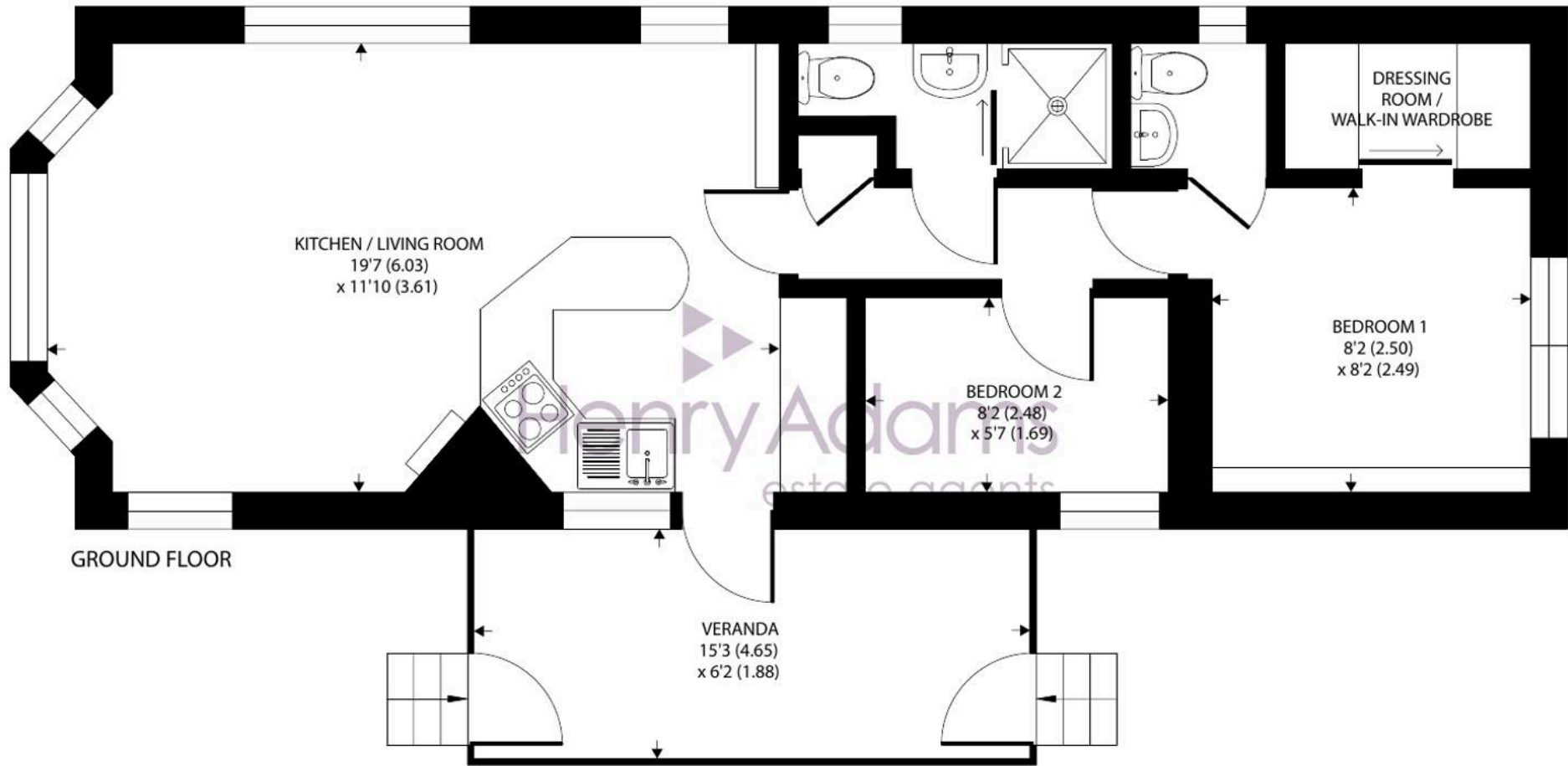
This opportunity presents a freehold plot with a caravan in situ, offered for sale with no onward chain and an 8 month licence. Family owned for 50 years, the plot measures approximately 48ft x 29ft, providing space for a peaceful retreat or a holiday base. The accommodation comprises an open plan living, dining, and kitchen area, creating a sociable and versatile environment for relaxing or entertaining. There are two bedrooms, ideal for family use or visiting guests, and the interior benefits from plenty of natural light throughout.

The outside space is located to the side of the caravan and is mainly laid to lawn offering an enclosed space for children to play or for outdoor relaxation. A raised, paved seating area provides the perfect spot for al fresco dining or enjoying the sun. Two wooden sheds are included for valuable storage, accommodating garden tools, bicycles, leisure equipment, one containing a washing machine and tumble dryer (both included in the sale). This property is ideally suited for buyers seeking a manageable plot with scope for enjoyment and flexibility, all within a well-established location.

Council Tax band: A

- Freehold plot with caravan in situ
- Family owned for 50yrs
- Plot measures 48ft x 29ft
- Open plan living/dining & kitchen
- Two bedrooms
- Offered for sale with an 8 month license
- Garden to the side with lawn and raised, paved seating area





Approximate Area = 471 sq ft / 43.7 sq m

For identification only - Not to scale





Henry Adams - Selsey

Henry Adams LLP, 122 High Street, Selsey - PO20 0QE

01243 606789

selsey@henryadams.co.uk

www.henryadams.co.uk/

Agents Note - Our particulars are for guidance only and are intended to give a fair overall summary of the property. They do not form part of any contract or offer, and should not be relied upon as a statement or representation of fact. Measurements, areas and distances are approximate only. Photographs may include lifestyle shots and pictures of local views. No undertaking is given as to the structural condition of the property, or any necessary consents or the operating ability or efficiency of any service, system or appliance. Please ask if you would like further information, especially before you travel to the property.