



Upper Flat, 6 Vallance Gardens, Hove
£625,000

**MANSELL
McTAGGART**
Trusted since 1947

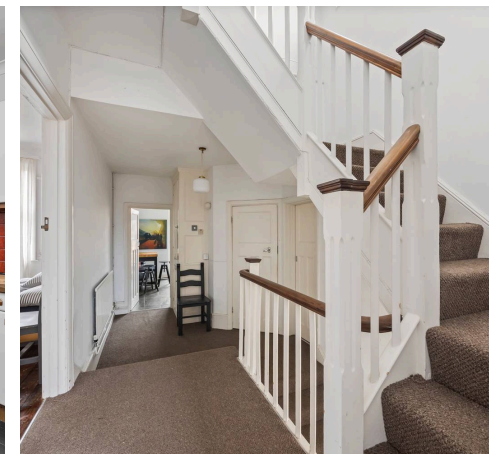
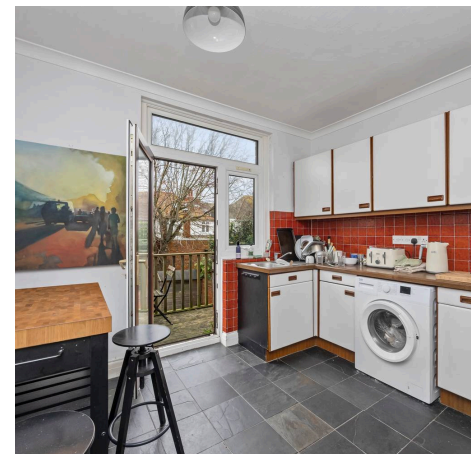
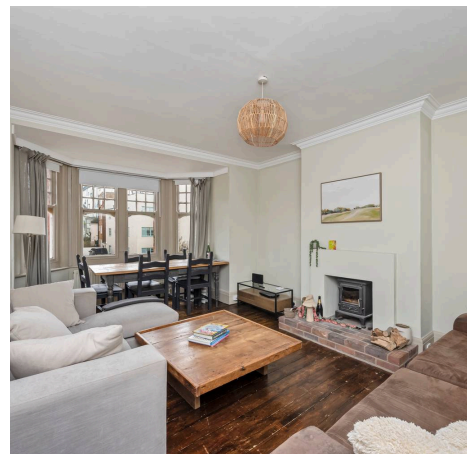
Upper Flat

6 Vallance Gardens, Hove

Council Tax band: D

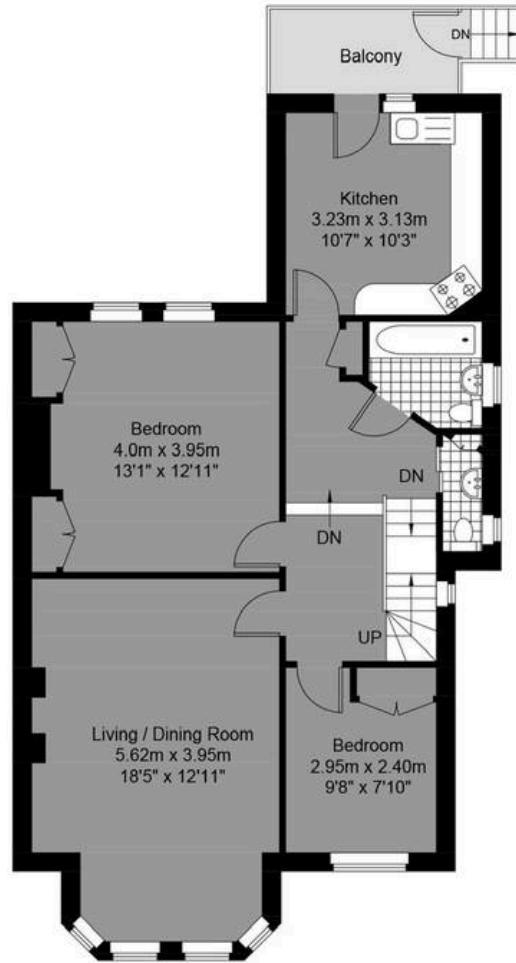
Tenure: Leasehold

- Four Bedroom First And Top Floor Maisonette
- Sold With No Onwards Chain
- Sold With 50% Share Of Freehold
- South West Facing Balcony
- Over 1200 sq ft Of Accommodation
- Sought After Hove Location, South Of Church Road & Right On Hove Seafront
- Red Brick Edwardian Villa In One Of Hove's Most Sought After Road
- Exclusive To Mansell McTaggart



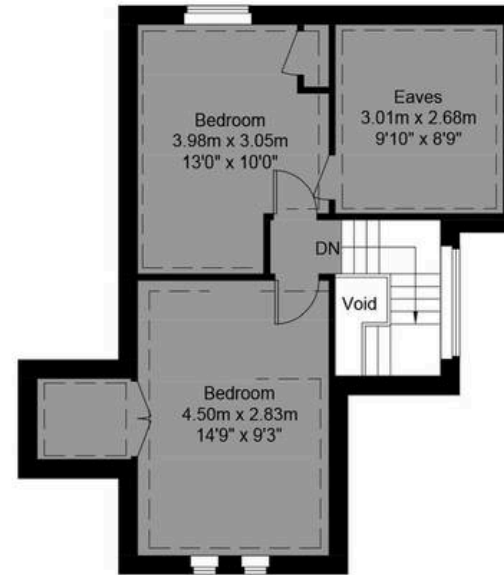
Approximate Gross Internal Area

= 131.37 sq m / 1414.04 sq ft



Vallance Gardens

First Floor
Approximate Floor Area
771.66 sq ft (71.69 sq m)



Second Floor
Approximate Floor Area
443.79 sq ft (41.23 sq m)

**MANSELL
McTAGGART**
— Trusted since 1947 —

Illustration for identification purposes only, measurements are approximate, not to scale.

© Mansell McTaggart



Mansell McTaggart Hove

170 Church Road, Hove - BN3 2DJ

01273 044929

hove@mansellmctaggart.co.uk

www.mansellmctaggart.co.uk/branch/hove/

