



King Edward Road, Christs Hospital

Guide Price £500,000 - £525,000

King Edward Road

Christ's Hospital, Horsham

Presenting this beautifully appointed three/four bedroom semi detached townhouse set over three floors, located in the sought-after village of Christ's Hospital.

This modern family home offers a versatile layout, beginning with a welcoming entrance hall that leads to a bright and spacious kitchen-diner on the ground floor, featuring contemporary units and integrated appliances, also access to the rear garden via French doors, perfect for both every-day living and entertaining guests.

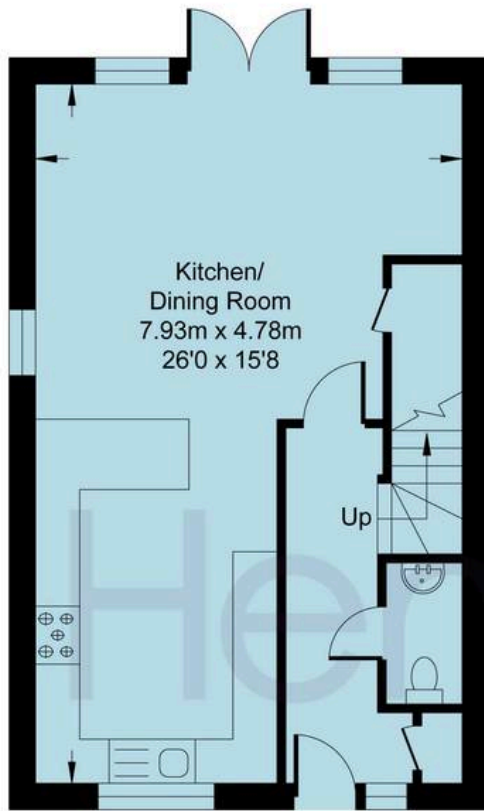
The ground floor also benefits from a convenient WC and plenty of storage.

Upstairs, the first floor comprises a generous living room that could also serve as a fourth bedroom or additional reception space, depending on your requirements, as well as a well-proportioned bedroom which is currently being used as an office, plus a modern family bathroom. The top floor is dedicated to two further double bedrooms, including a main bedroom with a private en suite shower room, providing a peaceful retreat for relaxation.

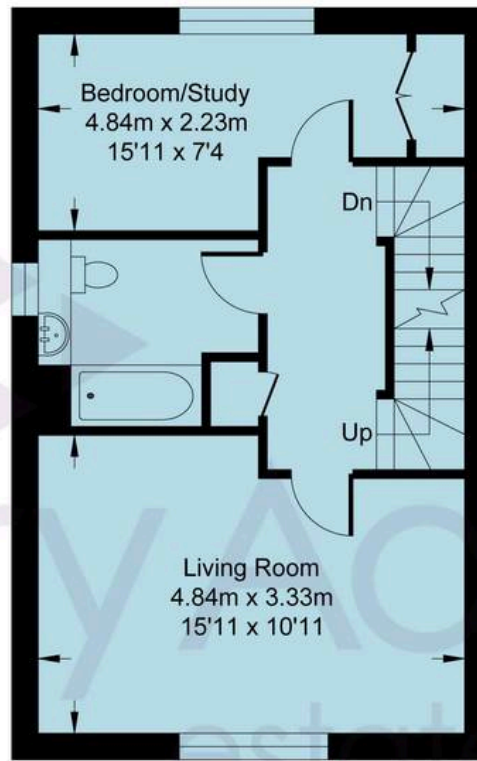
Throughout the property, neutral décor and quality finishes add to the sense of light and space, creating a welcoming atmosphere for families or professionals alike. The property also boasts driveway parking for two cars, offering convenience for residents and visitors.



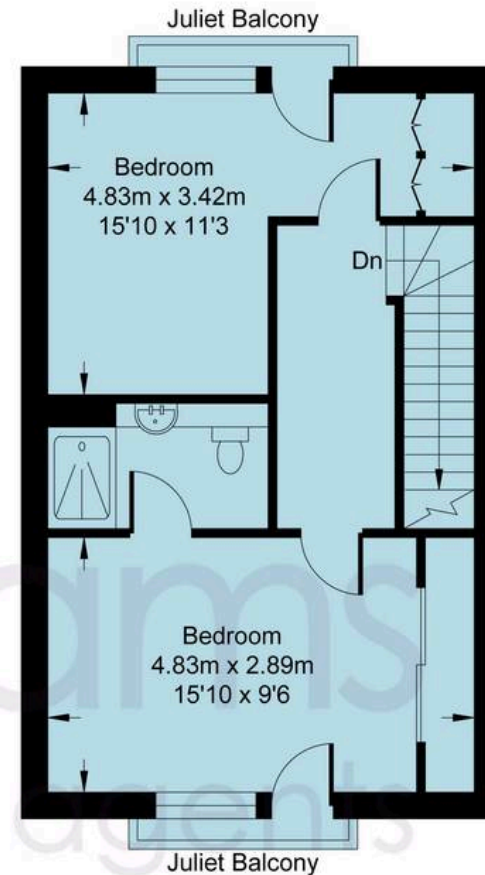




GROUND FLOOR



FIRST FLOOR



SECOND FLOOR



King Edward Road

Approximate Area = 1239.35 sq ft / 115.14 sq m

Total = 1239.35 sq ft / 115.14 sq m

For identification only - not to scale



Situated in the charming village of Christs Hospital, the home enjoys a tranquil setting while remaining within easy reach of local amenities, reputable schools, and excellent transport links, including the nearby railway station for direct access to London and the surrounding areas. This impressive townhouse is ideal for those seeking a modern, low-maintenance home in a desirable location, with flexible accommodation to suit a variety of lifestyles. Early viewing is highly recommended to fully appreciate the quality, space, and versatility this exceptional property has to offer.

Agent note - Management fees - £355.32 annually approx.

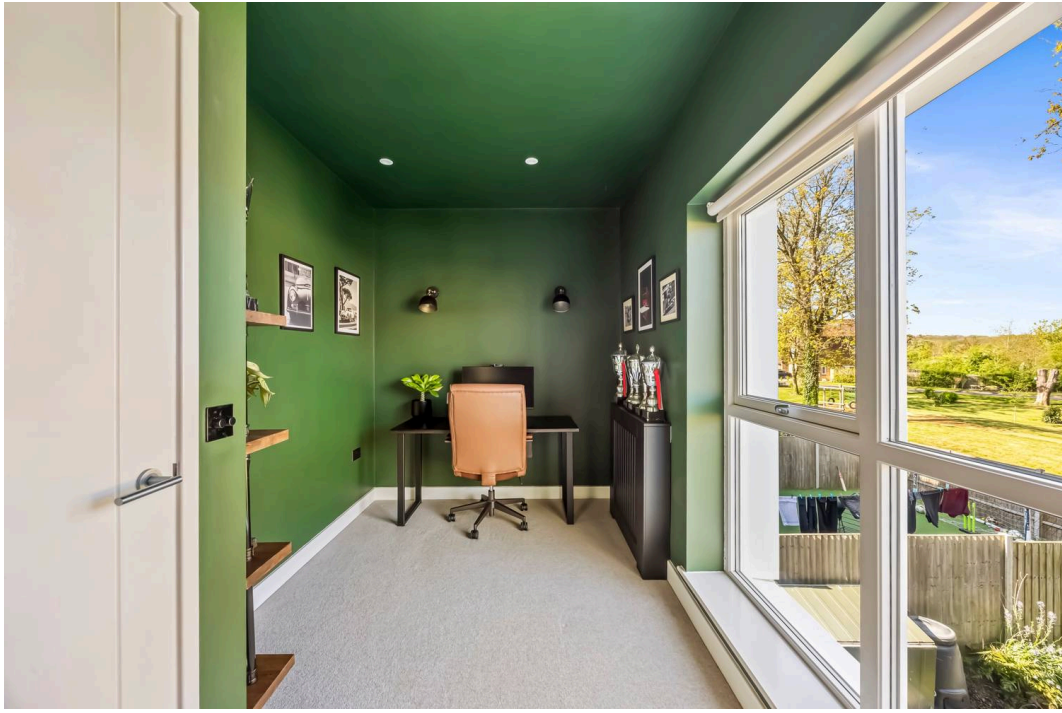
Council Tax band: E

Tenure: Freehold

EPC Energy Efficiency Rating: B

EPC Environmental Impact Rating: B







Henry Adams – Horsham

Henry Adams HRR Ltd, 50 Carfax, Horsham – RH12 1BP

01403 253271

horsham@henryadams.co.uk

www.henryadams.co.uk/

Agents Note – Our particulars are for guidance only and are intended to give a fair overall summary of the property. They do not form part of any contract or offer, and should not be relied upon as a statement or representation of fact. Measurements, areas and distances are approximate only. Photographs may include lifestyle shots and pictures of local views. No undertaking is given as to the structural condition of the property, or any necessary consents or the operating ability or efficiency of any service, system or appliance. Please ask if you would like further information, especially before you travel to the property.