

PS

Fellside Lodge, 37a Bingham Avenue, Lilliput, BH14 8ND

For Sale £899,950



Fellside Lodge

Lilliput, Evening Hill

This beautifully presented modern home, built in 2012, combines contemporary comfort with traditional charm in a prestigious area.

- Modern 3/4 bedroom detached house
- Purpose built office/gym
- Easy maintenance South Westerly garden
- Under floor heating on the ground floor
- Snug/bedroom 4
- 750m to Evening Hill & Poole Harbour
- Two private parking spaces
- Freehold
- Internal floor area: 1400 sq.ft
- Council Tax Band F: £3,466.65
- EPC Rating: C

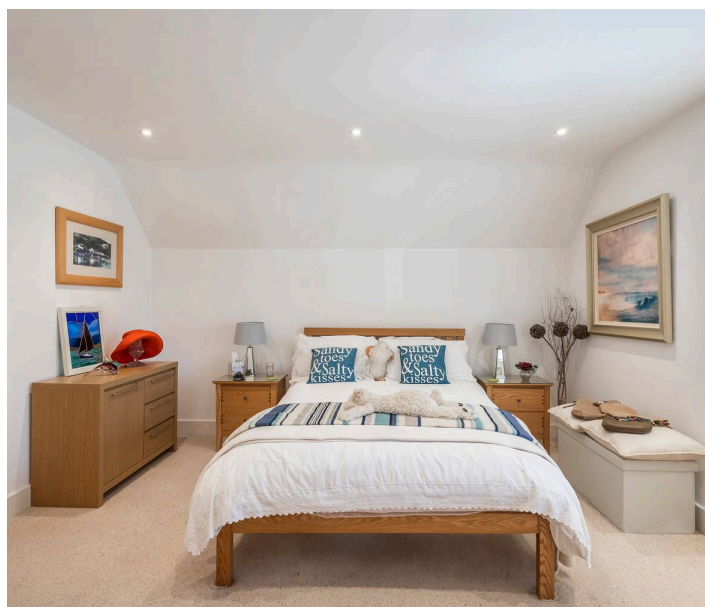


The property offers three spacious double bedrooms, including a luxurious en-suite in the principal bedroom. The heart of the home is an open-plan living area with a well-appointed kitchen featuring two ovens (one with a microwave function) and a large warming drawer, plus a breakfast bar for casual dining. Bi-fold doors open onto a private patio with steps to the secluded south-westerly garden. The cosy living space is enhanced by a multi-fuel log burner and underfloor heating throughout the ground floor.

Outside, the low-maintenance garden includes faux grass, a fish pond with a viewing window, and an external home office, perfect for remote work. Additional features include a ceramic-tiled utility room, fitted wardrobes in all bedrooms, and two off-street parking spaces. With flexible living options, the spacious ground-floor living room can easily double as a fourth bedroom, ideal for guests or as a private retreat. This home perfectly blends style, convenience, and comfort in a prime location, offering a versatile living arrangement to suit your needs.

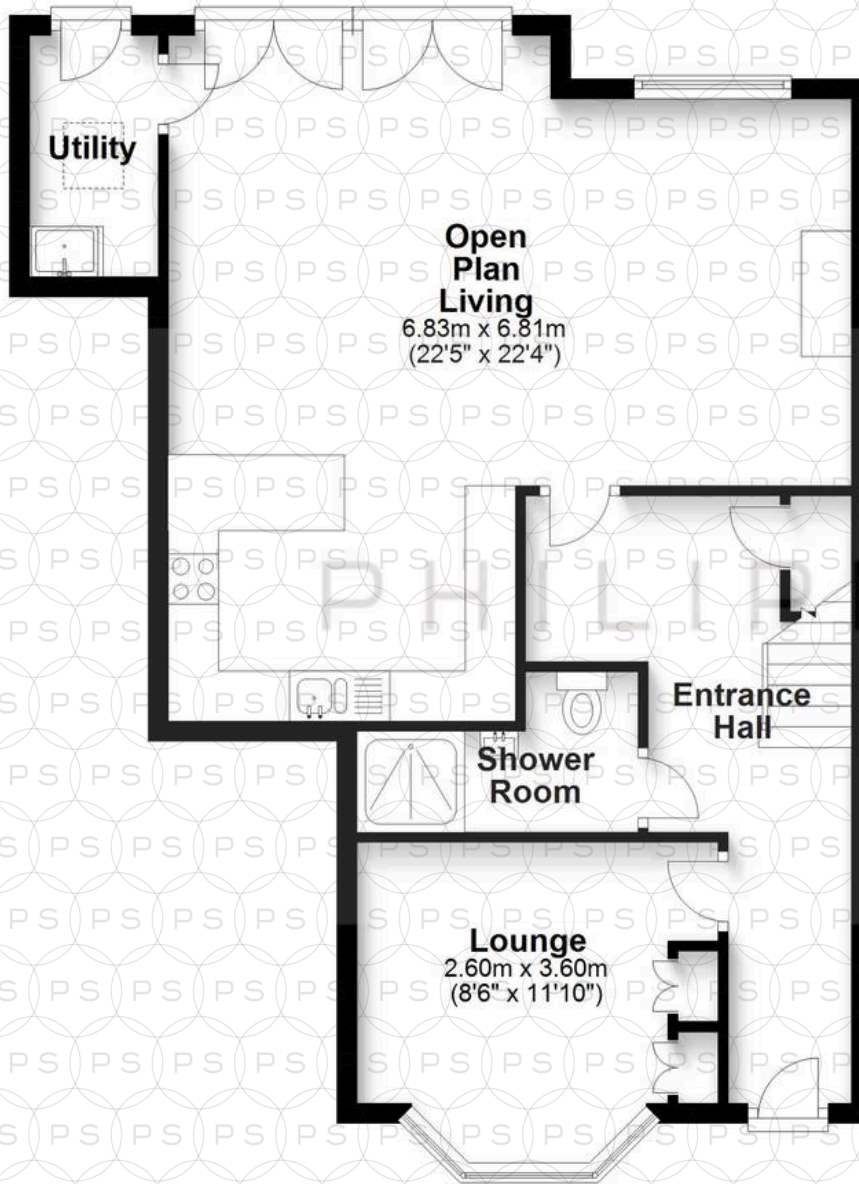
Location

Situated on the prestigious Bingham Avenue in Poole, this property enjoys one of the most desirable locations in the area. The nearby Lilliput Village provides access to boutique shops, cafes, and essential facilities, creating a vibrant and charming community atmosphere. In addition to its close proximity to local amenities, the property is within walking distance to the harbour 750m via a scenic footpath, making it ideal for those who enjoy waterside walks or access to water activities. Poole's award-winning beaches and the bustling marina are just a short drive away, perfect for enjoying the best of coastal living. The property also benefits from excellent transport links, with Poole train station providing regular services to London in just under 2 hours, making it an ideal option for commuters or those who enjoy the flexibility of city access alongside the tranquillity of coastal life.



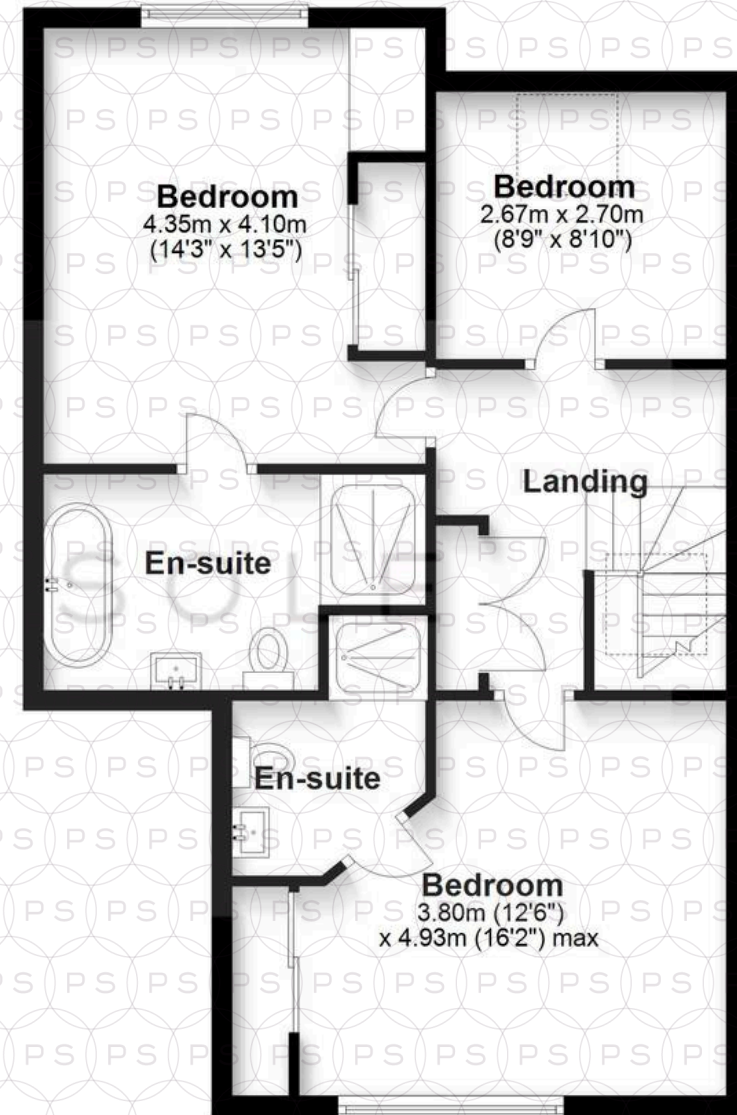
Ground Floor

Approx. 67.1 sq. metres (722.0 sq. feet)



First Floor

Approx. 63.0 sq. metres (678.6 sq. feet)



Total area: approx. 130.1 sq. metres (1400.6 sq. feet)

Bournemouth Energy Floor Plans are provided for illustration/identification purposes only. Not drawn to scale, unless stated and accept no responsibility for any error, omission or mis-statement. Dimensions shown are to the nearest 7.5 cm / 3 inches. Total approx area shown on the plan may include any external terraces, balconies and other external areas. To find out more about Bournemouth Energy please visit www.bournemouthenergy.co.uk (Tel: 01202 556006)

Plan produced using PlanUp.



Philippa Sole Ltd

Philippa Sole 3A Springfield Road, Ashley Cross - BH14 0LG

01202 747999 • enquiries@philippasole.co.uk • www.philippasole.co.uk

All statements in these particulars are made without responsibility on the part of Philippa Sole Ltd or the vendor. Neither Philippa Sole Ltd nor anyone in its employment or acting on its behalf has the authority to make any representation or warranty in relation to this property, detailed survey or tested services and fittings. Room sizes are approximate.