



12 Kingsbridge Avenue, Nottingham – NG3 5SA

Guide Price **£260,000**





12 Kingsbridge Avenue

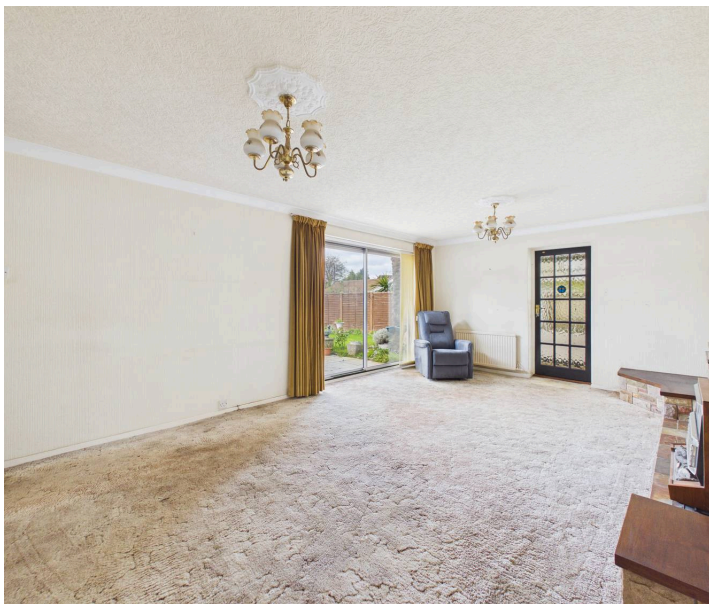
Nottingham, Nottingham

NO CHAIN! 2 bed detached bungalow on a delightful plot with a double garage & private garden. Quiet yet convenient location near shops, Gedling Country Park and bus links. Lots of potential!

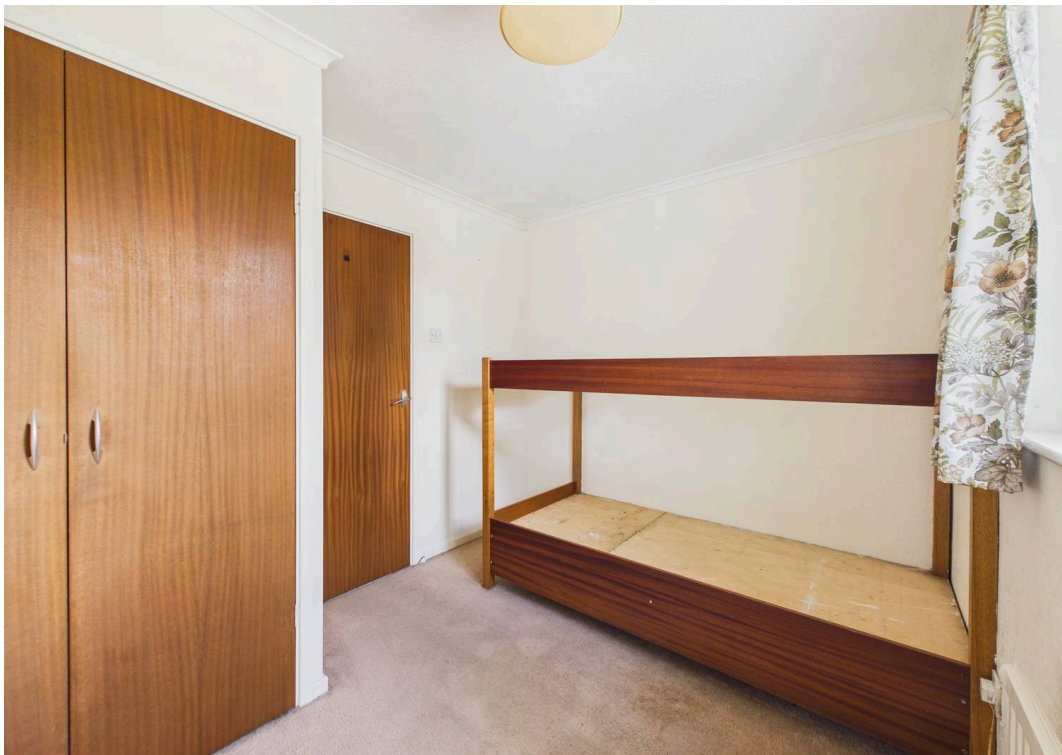
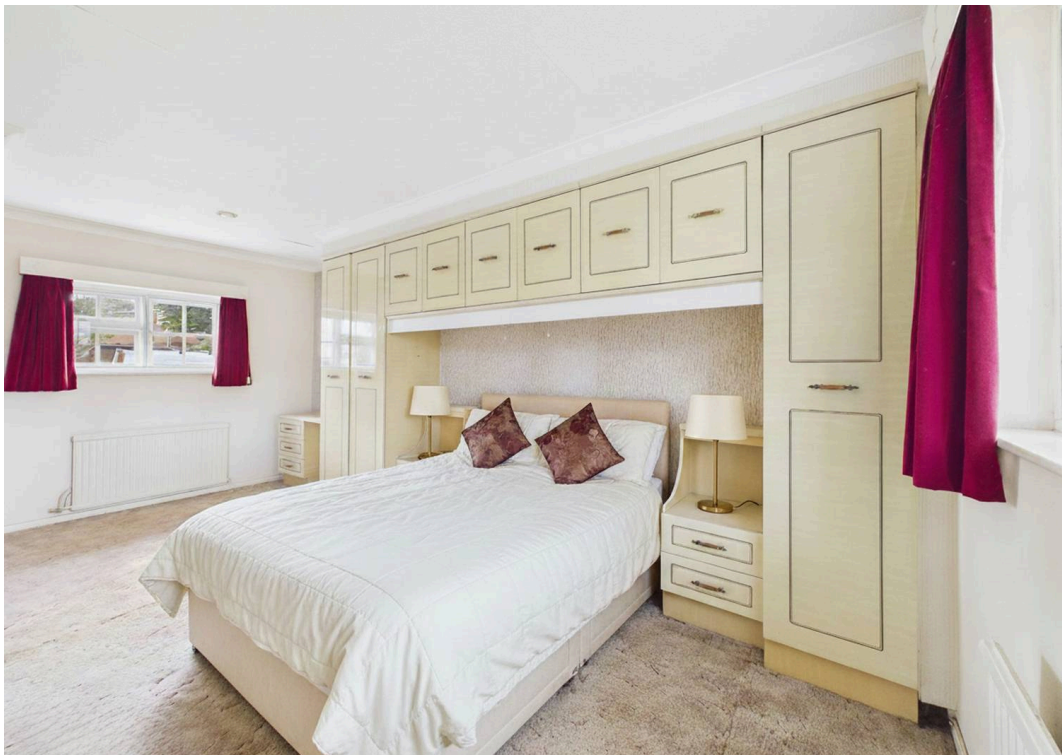
Council Tax band: C

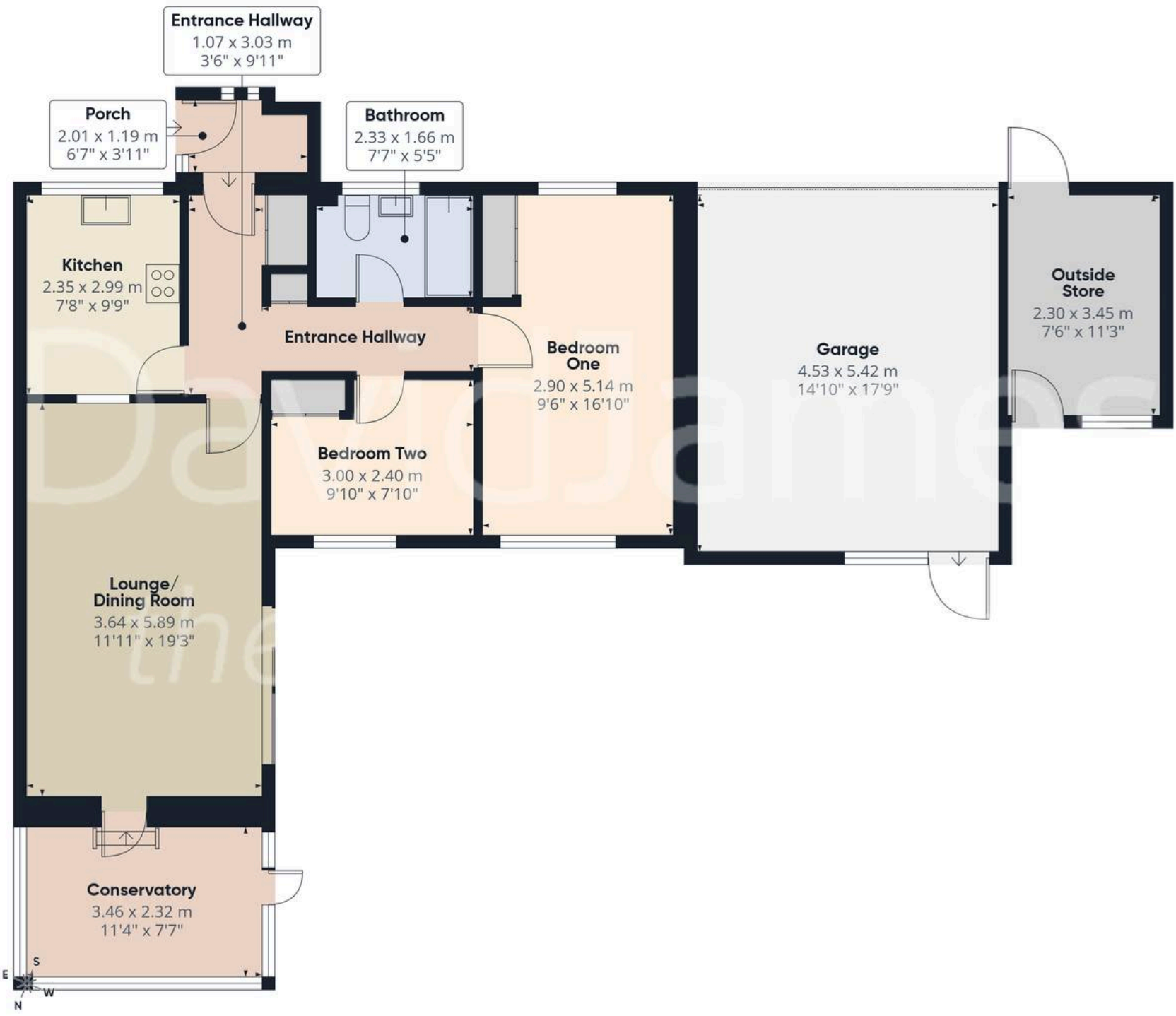
Tenure: Freehold

- Detached bungalow offered to the market with no chain
- Peaceful yet convenient location close Gedling Country Park, shops, bus links and local farm shop/cafe
- Ideal for downsizers or those seeking the advantages of single-storey living
- Generous lounge/dining room with fireplace and patio doors to garden
- Bright fitted kitchen with front aspect and space for appliances
- Versatile lean-to conservatory providing additional garden facing space
- Two well-proportioned bedrooms (main bedroom with built-in and fitted wardrobes)
- Three-piece bathroom suite with shower over bath
- Private enclosed rear garden with westerly aspect, patio, lawn and pond
- Ample parking with driveway, double garage and useful external store









Approximate total area⁽¹⁾

105.1 m²
1132 ft²

(1) Excluding balconies and terraces

Calculations reference the RICS IPMS 3C standard. Measurements are approximate and not to scale. This floor plan is intended for illustration only.

GIRAFFE360



David James Estate Agents

David James Estate Agents, 45B Plains Road – NG3 5JU

0115 962 4213 • mapperley@david-james.com • www.david-james.com

These particulars are produced in good faith and are set out as a general guide only. Measurements are approximate and floor plans are for illustrative purposes only. Services have not been tested. We have established professional relationships with third-party suppliers for the provision of services to Clients, details of which can be found on the property listing page on our website.