



65 Fisher Close, Sutton-In-Ashfield, NG17 2AA

Guide Price **£165,000**





65 Fisher Close

Sutton-In-Ashfield, Sutton-In-Ashfield

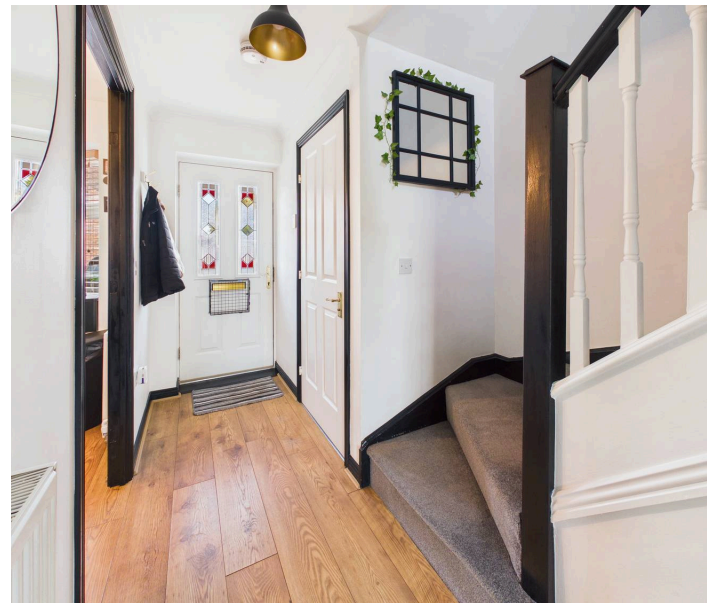
Modern two-bedroom mid townhouse with lounge, stylish kitchen, garden, parking for two cars, gas central heating, and double glazing. Ideal for first-time buyers or investors. Great location.

Council Tax band: A

Tenure: Freehold

EPC Energy Efficiency Rating: C

- Well presented modern mid townhouse
- Two bedrooms, bedroom one with fitted wardrobes
- Entrance hall with laminate floor, ground floor Wc with washbasin
- Lounge/dining room with laminate flooring, feature panelling to one elevation and French doors to the rear garden
- Modern kitchen with integrated oven, hob, extractor and fridge/freezer
- Stylish first floor bathroom/Wc with white suite and mains-fed shower
- Gas central heating, UPVC double glazing
- Attractive lawned rear garden with gravelled patio area
- Double width parking area to the front elevation provides off road parking
- Perfect for first-time buyers and investors

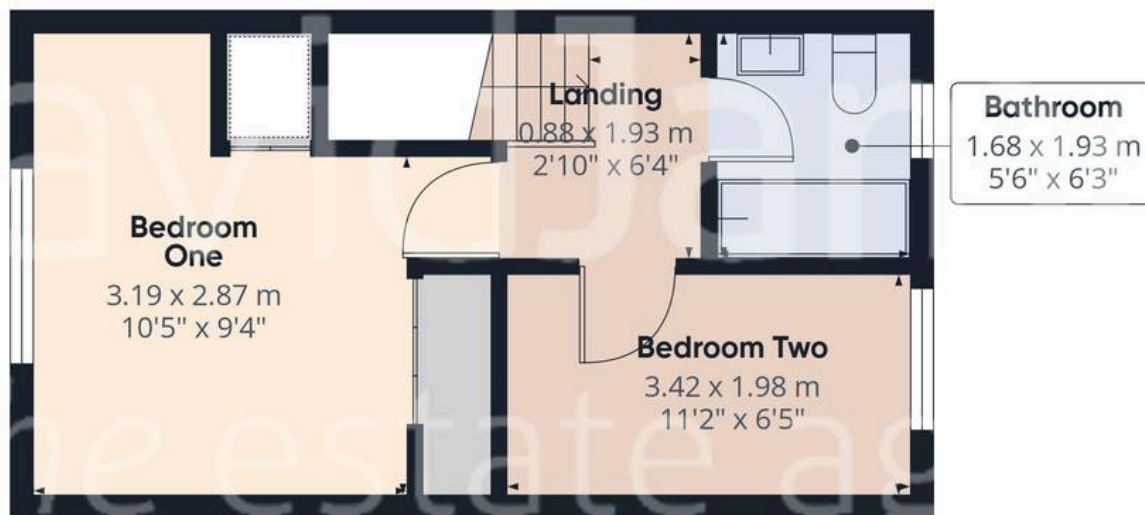








Floor 0



Floor 1



Approximate total area⁽¹⁾

53.5 m²
577 ft²

(1) Excluding balconies and terraces

Calculations reference the RICS IPMS 3C standard. Measurements are approximate and not to scale. This floor plan is intended for illustration only.

GIRAFFE360



David James Estate Agents

43 Forest Street, Sutton-in-Ashfield - NG17 1DA

01623 554084 • sutton@david-james.com • www.david-james.com

These particulars are produced in good faith and are set out as a general guide only. Measurements are approximate and floor plans are for illustrative purposes only. Services have not been tested. We have established professional relationships with third-party suppliers for the provision of services to Clients, details of which can be found on the property listing page on our website.