



Flat 5, 107 Dartmouth Park Hill, London

Guide Price **£400,000**

**DAVID
ANDREW**

your
most
valuable
asset

Flat 5

107 Dartmouth Park Hill, London

Set within the sought-after, tree-lined Dartmouth Park Hill, this well-presented one-bedroom, top-floor flat extends to approximately 555 sq ft (51.5 sq m) and offers a superb combination of light, space and modern living.

The property comprises a well-proportioned double bedroom, a stylish three-piece bathroom, excellent built-in storage including a walk-in wardrobe, and a contemporary integrated kitchen. The kitchen flows into a bright open-plan living and dining room, with elegant glass panel partitions creating subtle separation while maintaining an open and airy feel, ideal for both relaxing and entertaining. The property further benefits from a 103-year lease and is being sold with no onward chain.

The living space is flooded with natural light and opens directly onto a private west-facing balcony, perfectly positioned to enjoy afternoon and evening sun, complemented by peaceful, leafy tree-lined views.

Dartmouth Park Hill is a serene residential street ideally placed for excellent connectivity. Nearby transport links include Archway Station (Northern Line, Zone 2) and Tufnell Park Station, as well as Upper Holloway Overground, providing fast access into the City as well as bus routes across London.

The surrounding area is rich in green spaces, including Waterlow Park, Dartmouth Park and Hampstead Heath, all within easy reach. You'll also benefit from close proximity to Highgate Village, Crouch End and Kentish Town, each offering a vibrant mix of independent shops, cafes and restaurants.





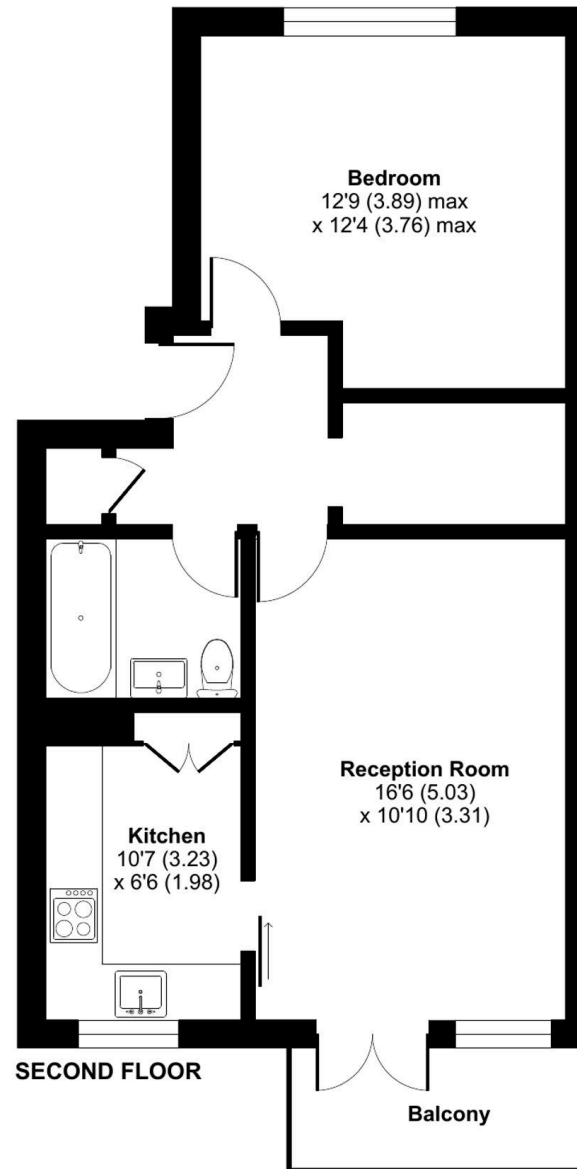
Dartmouth Park Hill, London, N19

Approximate Area = 555 sq ft / 51.5 sq m

For identification only - Not to scale

DAVID ANDREW

your
most
valuable
asset



Archway Office

671 Holloway Road
London, N19 5SE

T (0)20 7619 3750

Highbury Office

90 Highbury Park
London, N5 2XE

T (0)20 7354 9111

Finsbury Park Office

167 Stroud Green Road
London, N4 3PZ

T (0)20 7281 2000

Property Management Office

235 Blackstock Road
London, N5 2LL

T (0)20 7354 9222

scan to book
a viewing



Floor plan produced in accordance with RICS Property Measurement 2nd Edition, Incorporating International Property Measurement Standards (IPMS2 Residential). © ncthemcom 2026. Produced for David Andrew. REF: 1446735



has been exercised in the of these particulars, about the property must not be on as representations of or fact. Prospective applicants e and rely upon their own and those of professional ives. David Andrew Estates liability for any error contained in these particulars.

