



168 and 168a Edwards Lane, Nottingham - NG5 3HZ

Guide Price £600,000 - £650,000



168 and 168a Edwards Lane

Nottingham, Nottingham

GUIDE PRICE £600,000-£650,000 NO CHAIN!

Detached property configured as 2 semi-detached 4 bed homes! Unique opportunity - ideal for investors, multi-generation families or healthcare professionals.

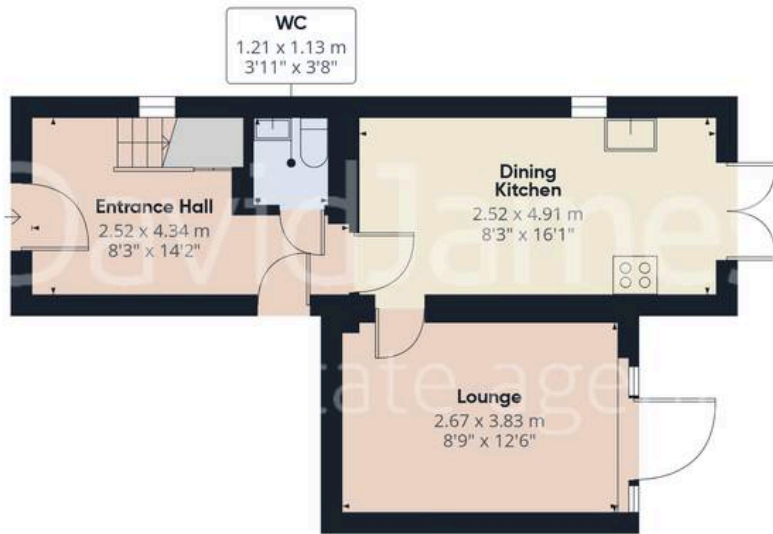
Council Tax band: TBD

Tenure: Freehold

- Well-presented detached property (currently configured as two separate dwellings)
- Two self-contained four bedroom semi-detached homes offering modern accommodation throughout
- Available to purchase with no upward chain
- Option to buy collectively or individually
- Close to Sherwood's excellent nearby amenities (including shops, restaurants and popular schools)
- Nottingham City Hospital and frequent bus services to the City on the doorstep
- Ideal for a variety of buyers (including investors, multi-generation families or healthcare professionals)
- Stylishly-presented with modern decor throughout and contemporary fitted kitchens and bathrooms
- Two separate lawned and enclosed gardens to the rear
- Block paved off-street parking to the front for multiple vehicles







Floor 0



Floor 1



Floor 2



Approximate total area⁽¹⁾

90.7 m²

978 ft²

(1) Excluding balconies and terraces

Calculations reference the RICS IPMS 3C standard. Measurements are approximate and not to scale. This floor plan is intended for illustration only.

GIRAFFE360



David James Estate Agents

98-100 Front Street, Arnold - NG5 7EJ

0115 955 5550 • arnold@david-james.com • www.david-james.com

These particulars are produced in good faith and are set out as a general guide only. Measurements are approximate and floor plans are for illustrative purposes only. Services have not been tested. We have established professional relationships with third-party suppliers for the provision of services to Clients, details of which can be found on the property listing page on our website.