

HARRISON
Sales &
Lettings
HARDIEN



For sale with
Harrison
Hardie

Fosseway Avenue, Moreton-In-Marsh



Located on a popular road on the outskirts of the market town of Moreton-in-Marsh, this four bedroom detached house combines spacious living with the convenience of being just a short walk from local amenities.

Coming in through the entrance hall and into the hallway, there is a bright and spacious living room to the right, with a feature stone fireplace and double doors leading into the dining room. With double doors leading out to the rear garden, the dining room seamlessly blends indoor and outdoor entertaining.

Continuing round to the left there is an open plan kitchen and breakfast room, with ample space for large appliances plus a breakfast table and chairs. With the kitchen sink positioned perfectly in front of the window with lovely views of the rear garden and beyond, the space also benefits from access via the hallway.

Completing this floor, there is a downstairs WC come utility room, adding to this homes practicality.

Upstairs, there are four bedrooms, three of which are doubles and one single. Two bedrooms benefit from built in storage, and all are serviced by the main bathroom, which has a bath with overhead shower.

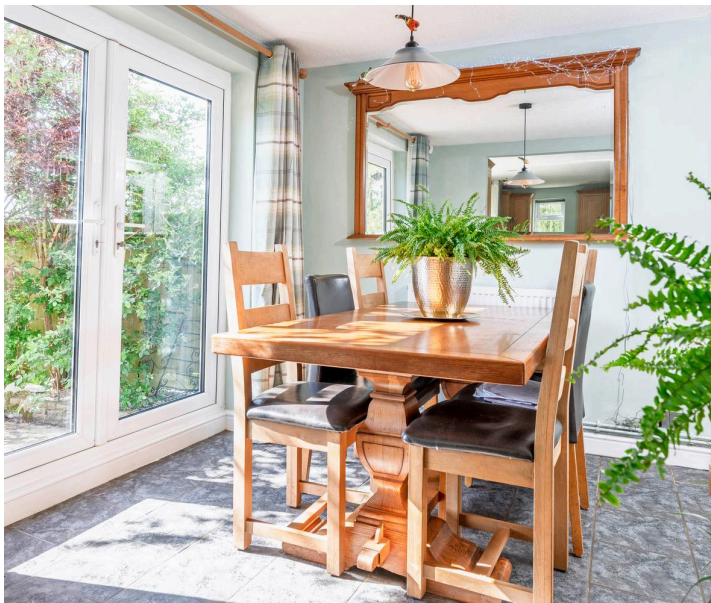
Externally, the property benefits from a generous size, low maintenance garden, with patio area by the rear patio doors, and large lawn, with views of the fields to the rear.

EPC: D

Council Tax Band: D

Tenure: Freehold

what3words:///dreading.intention.leaflet

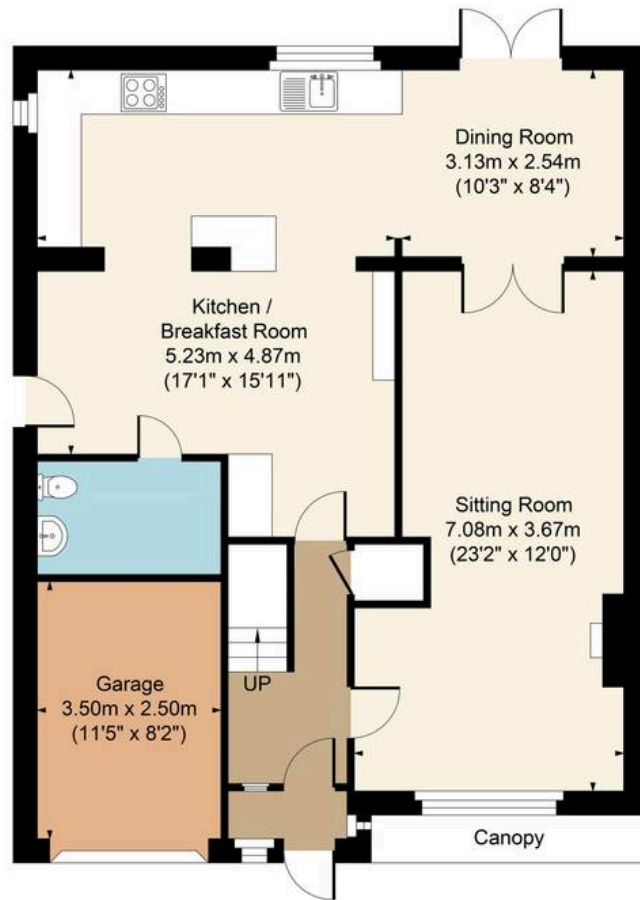




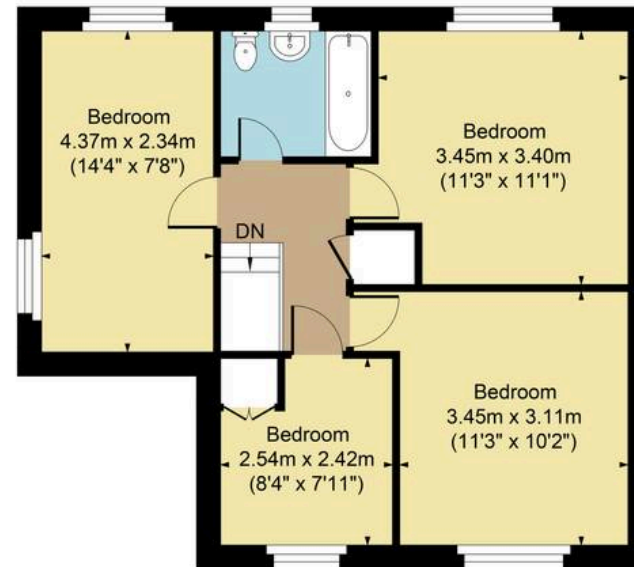
Main House Approx. Gross Internal Area:- 121.36 sq.m. 1306 sq.ft.

Garage Approx. Gross Area:- 8.75 sq.m. 94 sq.ft.

Total Approx. Gross Area:- 130.11 sq.m. 1400 sq.ft.



Ground Floor



First Floor

FOR ILLUSTRATIVE PURPOSES ONLY-NOT TO SCALE

The position & size of doors, windows, appliances and other features are approximate only.

□□□ Denotes restricted head height

www.dmlphotography.co.uk

17 High Street, Moreton-In-Marsh

GL56 0AF

harrisonhardie.co.uk 01608 651000