



7 Wheatlands Road, Harrogate

Harrogate

Guide Price £950,000



MYRINGS



7 Wheatlands Road

Harrogate, Harrogate

A truly amazing 4 bedroom period semi-detached house built in circa 1920 having undergone a complete refurbishment programme to the highest of standards over three floors drawing particular attention to the open plan living kitchen & living space/family room with central island and two sets of crittall doors leading out onto private mature south facing lawned gardens and with the advantage of a garden office/studio, located off the Leeds Road within a short walk of M&S Food, Hornbeam Park train station & Oatlands Primary School.

Council Tax band: E

Tenure: Freehold

- FOUR BEDROOM PERIOD SEMI-DETACHED HOUSE (CIRCA 1920)
- FULLY REFURBISHED TO A HIGH SPECIFICATION OVER THREE FLOORS
- STUNNING OPEN PLAN LIVING KITCHEN & FAMILY SPACE
- GARDEN OFFICE/STUDIO WITH WC & LAUNDRY
- PRIME LOCATION CLOSE TO SHOPS, TRAIN STATION & PRIMARY SCHOOL
- SOUTH FACING MATURE LAWNED GARDENS WITH FLAGGED PATIOS
- DRIVEWAY PARKING & FRONT LAWNED GARDENS

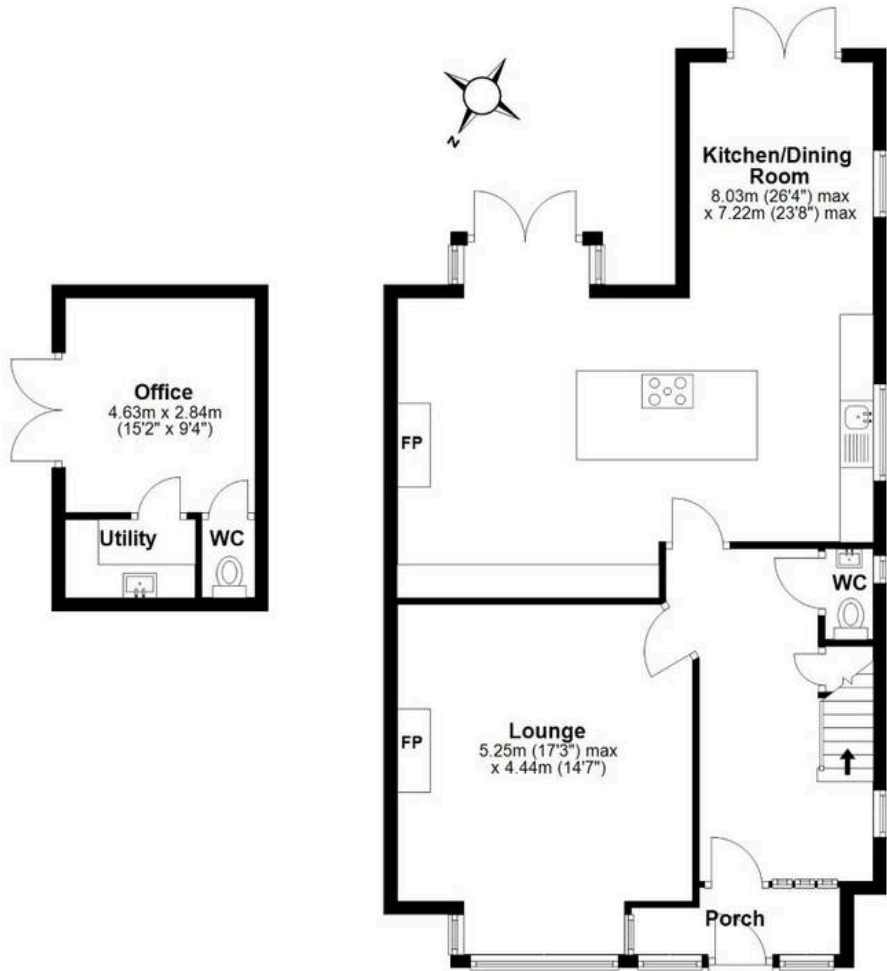


MYRINGS



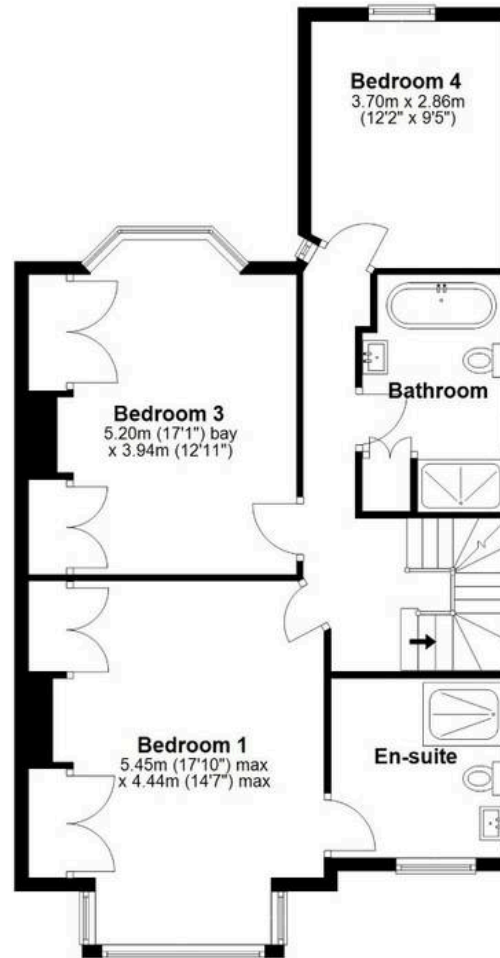
Ground Floor

Approx. 93.3 sq. metres (1004.1 sq. feet)



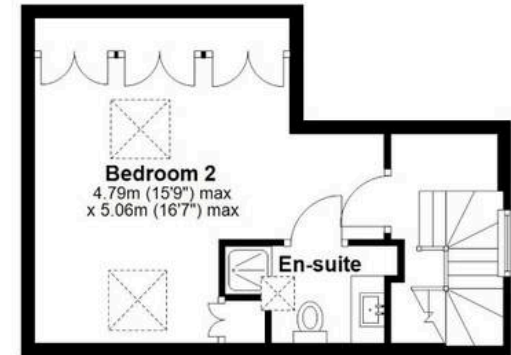
First Floor

Approx. 78.1 sq. metres (840.4 sq. feet)



Second Floor

Approx. 29.1 sq. metres (312.7 sq. feet)



Total area: approx. 200.4 sq. metres (2157.2 sq. feet)

All measurements are approximate and display purposes only.
Plan produced using PlanUp.





Myrings Estate Agents

Myrings Estate Agents Ltd, 10 Princes Square - HG1 1LX

01423

566400

▪ enquiries@myringsestateagents.com ▪ <http://myringsestateagents.com/>

