



Sherwood Road, Retford, DN22 7UH

£170,000 Freehold

- Well Proportioned THREE BEDROOM Semi Detached Family Home • Baxi Combi Boiler Installed in 2022 • Low Maintenance Front Garden & Sizeable, Southerly Aspect Laid to Lawn Rear Garden with Raised Patio Area • Conveniently Located in the Ever Popular Ordsall • Close Proximity to Everyday Amenities, Restaurants, Recreational Facilities, & Excellent Road & Rail Links



We are thrilled to welcome this well proportioned THREE BEDROOM semi detached family home to the market. Set over two storeys and measuring approximately 915 sq ft., the living accommodation briefly comprises of entrance hall, lounge, kitchen diner, rear entrance, ground floor WC, galleried first floor landing, master bedroom, two further bedrooms and a well appointed family bathroom. Outside sees a low maintenance front garden, whilst a sizeable, southerly aspect laid to lawn space and raised patio area reside to the rear. Located in the ever popular Ordsall, the plot sits just minutes away from Ordsall Primary School, and enjoys close proximity to the array of everyday amenities, restaurants and recreational facilities the historic market town of Retford has to offer, alongside excellent road and rail links. Retford Train Station, offering direct lines to King's Cross in less than 90 minutes at selected times is within easy reach on foot.

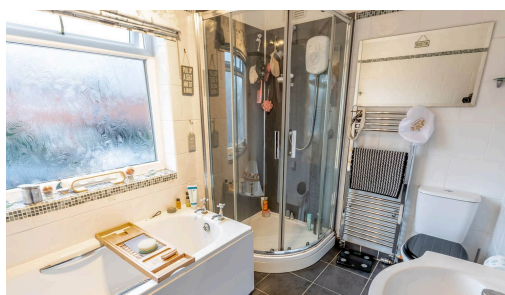
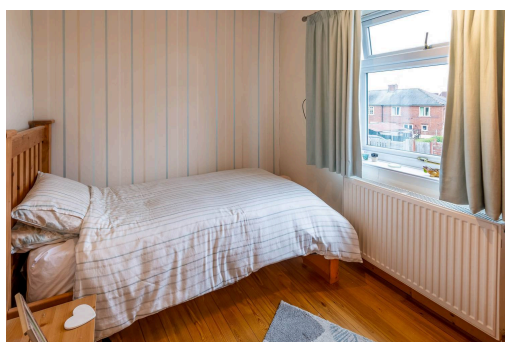


Council Tax band: A

Tenure: Freehold

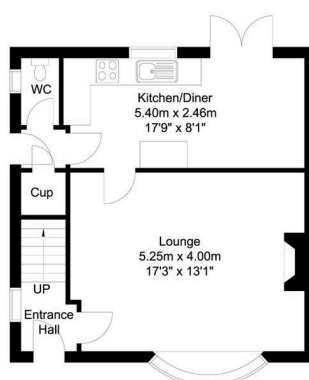
EPC Energy Efficiency Rating: D

EPC Environmental Impact Rating: D

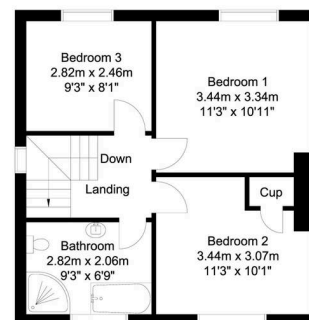


AJ ALEXANDER JACOB
ESTATE AGENTS & COMPANY

Ground Floor
43 sq m/462.84 sq ft
Approx.



First Floor
42 sq m/452.08 sq ft
Approx.



Whilst every attempt has been made to ensure the accuracy of the floor plan contained here, no responsibility is taken for incorrect measurements of doors, windows, appliances and rooms or any error, omission or misstatement. Exterior and interior walls are drawn to scale based on interior measurements. Any figure given is for initial guidance only and should not be relied on as a basis of valuation. The plans are for marketing purposes only and should only be used as such. No guarantee is given on the accuracy of the total square footage/ metrage if quoted on this plan.
CP Property Services @2024