



Waterfields, Retford, DN22 6RE

£200,000 Freehold

• ****NO UPWARD CHAIN**** • Well-Placed **THREE DOUBLE BEDROOM** End Townhouse • Enjoying a Quiet Cul De Sac Location with Riverside Views • Sizeable Master Bedroom Boasting Ample Storage & Master En Suite • Two Allocated Parking Spaces • Secure, Low Maintenance Rear Garden & Patio Area • Conveniently Situated on a Popular Complex in Retford • A Brief Walk from the Town's Wealth of Everyday Amenities, Recreational Facilities, Bars, Restaurants, & Schools for All Age Groups



An exciting opportunity to acquire a well-placed THREE DOUBLE BEDROOM end townhouse, enjoying a quiet cul de sac location with riverside views. Set over three storeys, and enjoying new carpets to the first and second floor, the generous living accommodation briefly comprises an entrance hall, kitchen diner overlooking the River Idle, lounge, handy ground floor WC, two double bedrooms, and a well-appointed family bathroom. A sizeable master bedroom spans the entirety of the top floor, boasting ample storage and a master en suite. Outside sees two allocated parking spaces, whilst a secure, low maintenance garden resides to the rear. Conveniently situated on a popular complex in Retford, 56 Waterfields is just a brief walk from the town's wealth of everyday amenities, recreational facilities, bars, restaurants, and excellent road and rail links. Carr Hill Primary & Nursery School, having most recently achieved a good Ofsted rating, is also within easy reach on foot.



Council Tax band: B

Tenure: Freehold

EPC Energy Efficiency Rating: C

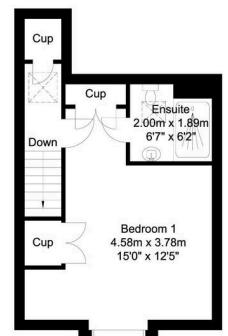
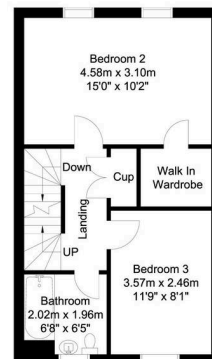
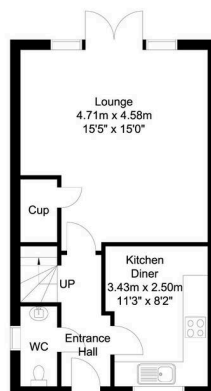
EPC Environmental Impact Rating: C



Ground Floor
38 sq m/409.02 sq ft
Approx.

First Floor
38 sq m/409.02 sq ft
Approx.

Second Floor
28 sq m/301.38 sq ft
Approx.



Whilst every attempt has been made to ensure the accuracy of the floor plan contained here, no responsibility is taken for incorrect measurements of doors, windows, appliances and rooms or any error, omission or misstatement. Exterior and interior walls are drawn to scale based on interior measurements. Any figure given is for initial guidance only and should not be relied on as a basis of valuation. The plans are for marketing purposes only and should only be used as such. No guarantee is given on the accuracy of the total square footage/ metrage if quoted on this plan. ©P Property Services @2020